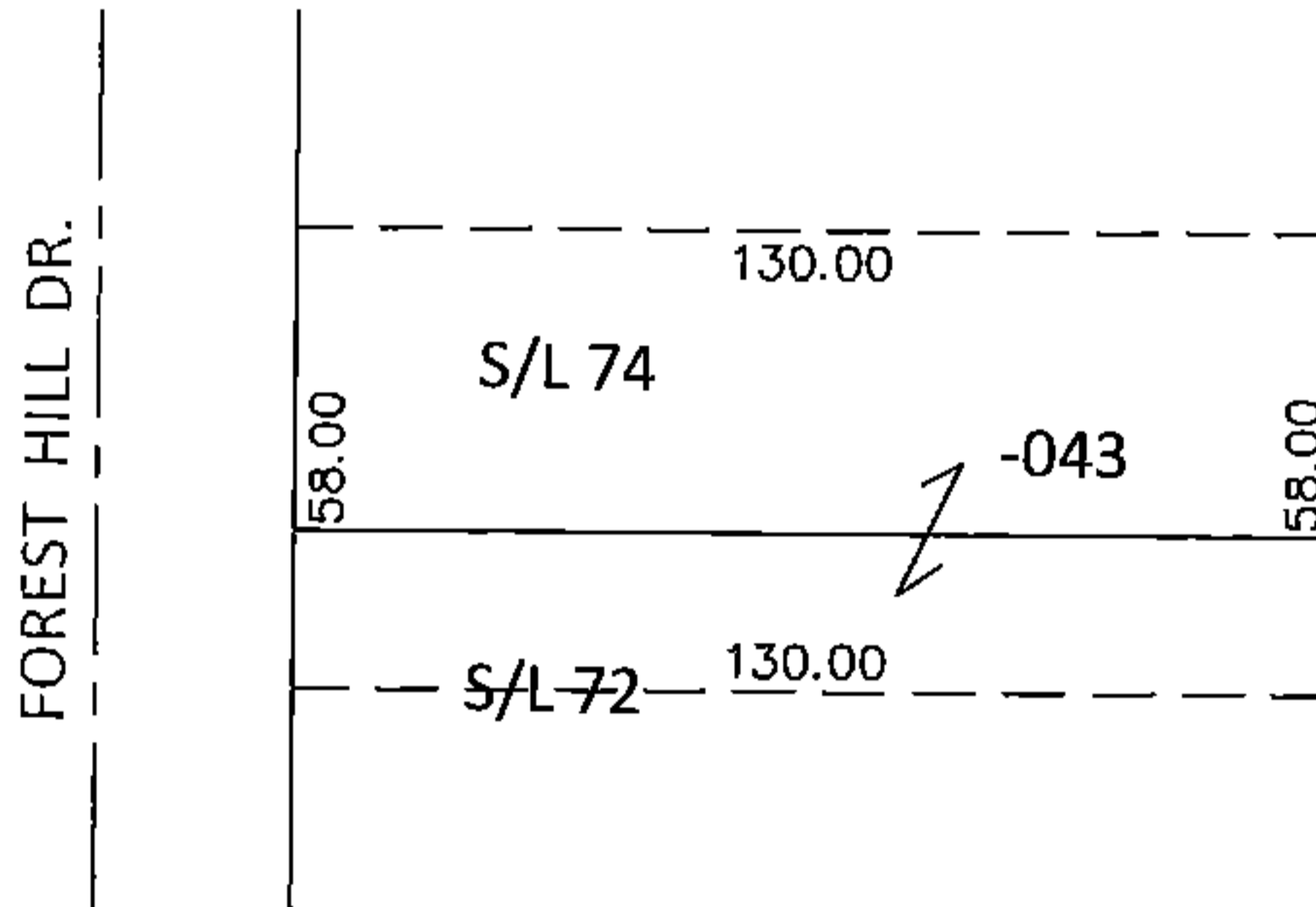
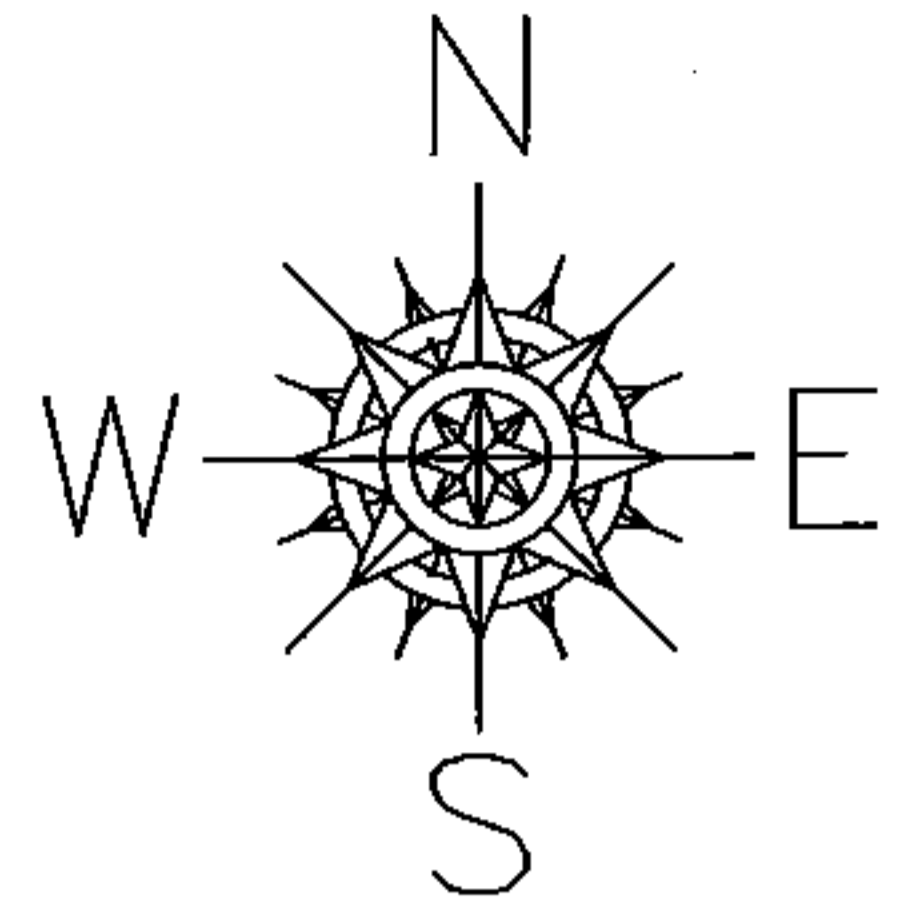


PARENT PARCEL: 04-00-018-145-043

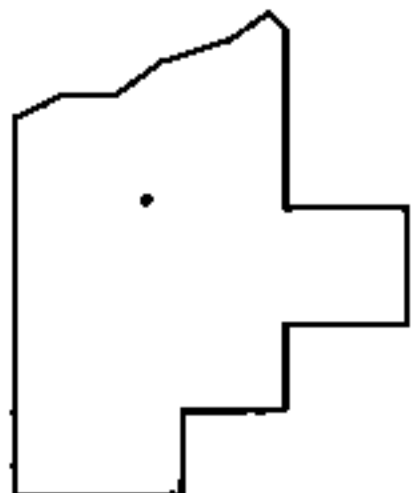
CHILD PARCEL: _____

STARTING POINT: 2 FEET SOUTH FROM THE NORTHWEST CORNER OF S/L 74 IN WOODHAVEN BEACH SUB. (VOL.11 PG.12)

14-02959-X



NO MAP CHANGES



SPLITS/DEEDS PROCESSED

LORAIN COUNTY TAX MAP DEPARTMENT
226 MIDDLE AVE. ELYRIA, OHIO

SURVEYED BY: STEPHEN P.CAMPBELL

CLOSURE: .00:10,000

MAP PAGE(S): 4-00-018-D

APPROVED BY: RRM DATE: 6-11-14

SCALE: 1"= 50' PRIOR INST.: 20140498812