

PARENT PARCEL: 03-00-099-101-011

CHILD PARCEL: XX-XX-XXX-XXX-XXX

STARTING POINT: 3/4" I.P. FOUND, N.E. CORNER OF SUBLOT NO. 1

14-02952-C

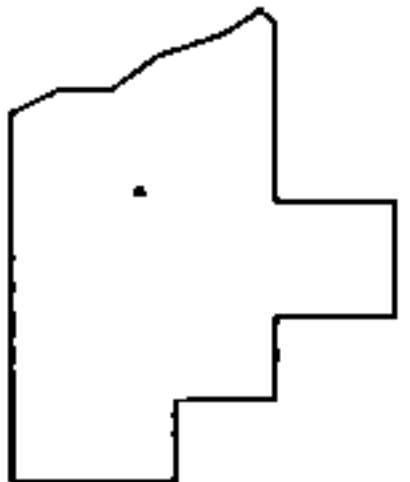
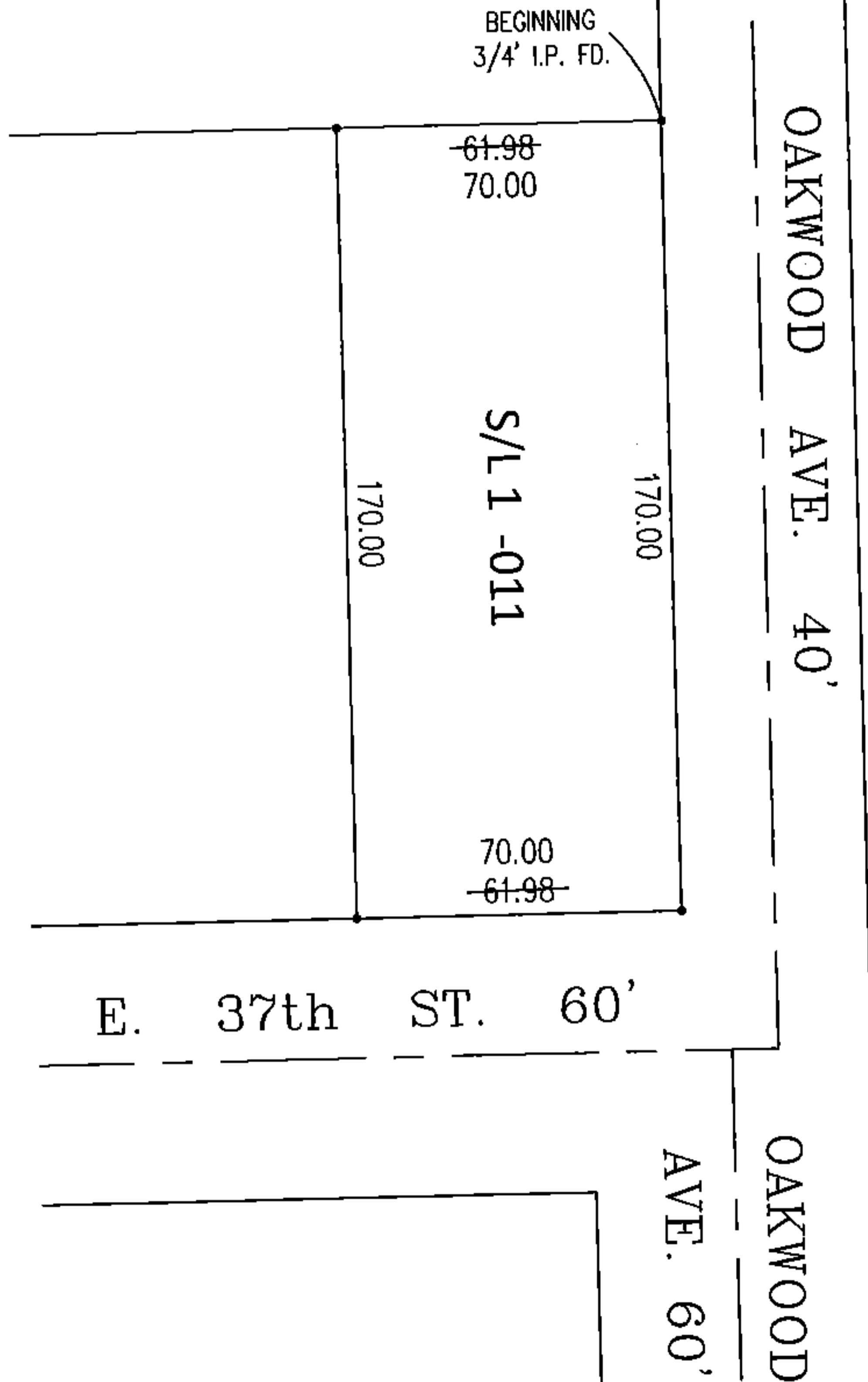
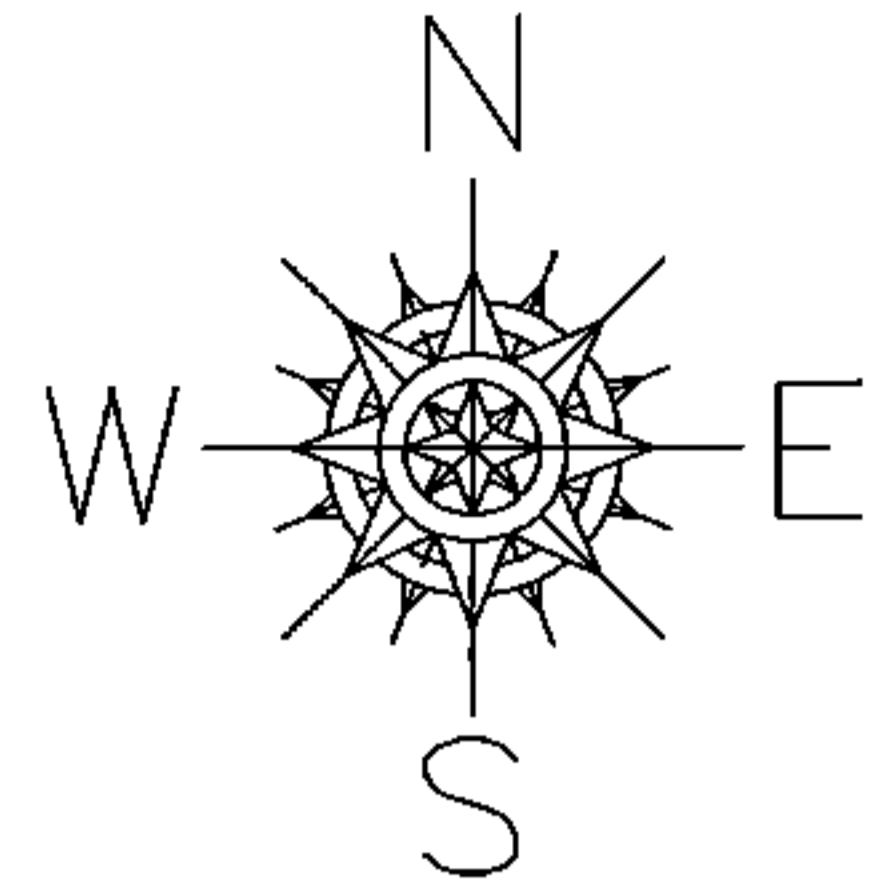
FRONTAGE CORRECTION

03-00-099-101-011

~~61.98~~ X 170.00

70.00 X 170.00

CORR. PER SURV.
DALE R. HAYWOOD



SPLITS/DEEDS PROCESSED

LORAIN COUNTY TAX MAP DEPARTMENT
226 MIDDLE AVE. ELYRIA, OHIO

SURVEYED BY: DALE R. HAYWOOD

CLOSURE: 0.00 : 10,000

MAP PAGE(S): 3-00-099

APPROVED BY: TJS DATE: 6/4/14

SCALE: 1" = 50' PRIOR INST.: 20140493146