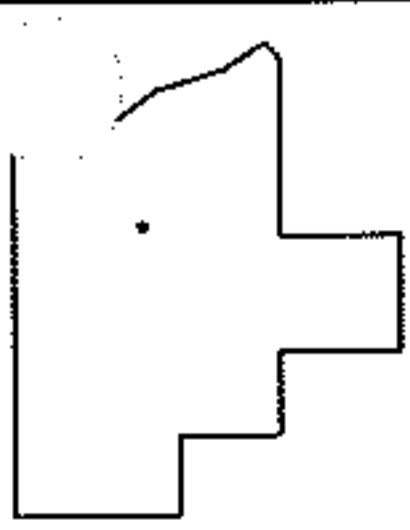
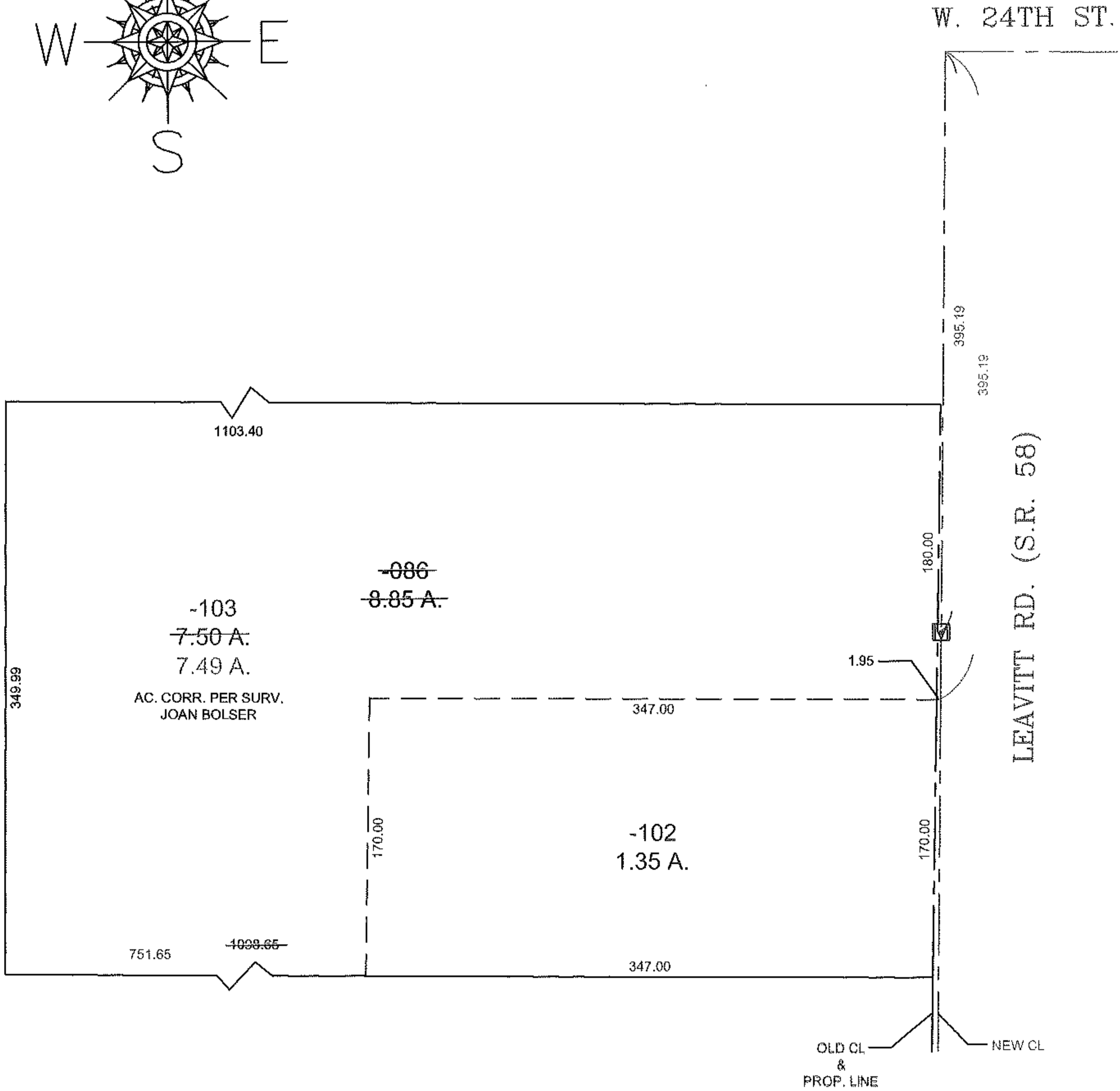
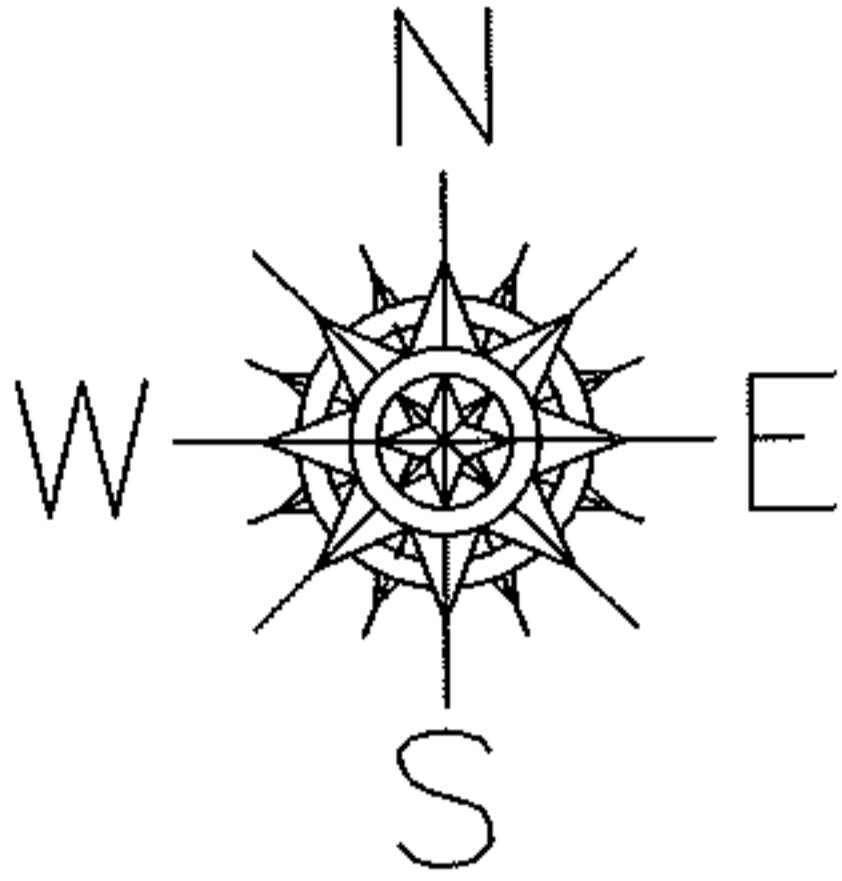


PARENT PARCEL: 02-02-018-000-086  
CHILD PARCEL: 02-02-018-000-102 & -103  
STARTING POINT: CL OF W. 24TH ST. & CL OF LEAVITT RD. (S.R. 58)

11-02948



SPLITS/DEEDS PROCESSED  
LORAIN COUNTY TAX MAP DEPARTMENT  
226 MIDDLE AVE. ELYRIA, OHIO

SURVEYED BY: JOAN BOLSER  
CLOSURE: 0.01 : 10,000  
MAP PAGE(S): 02-02-018-B  
APPROVED BY: TJS DATE: 9/22/11  
SCALE: 1" = 200 PRIOR INST.: 20050064342