

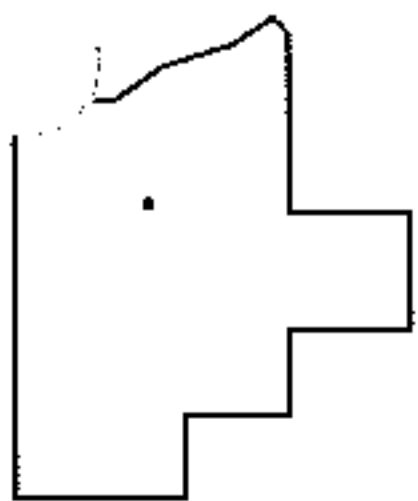
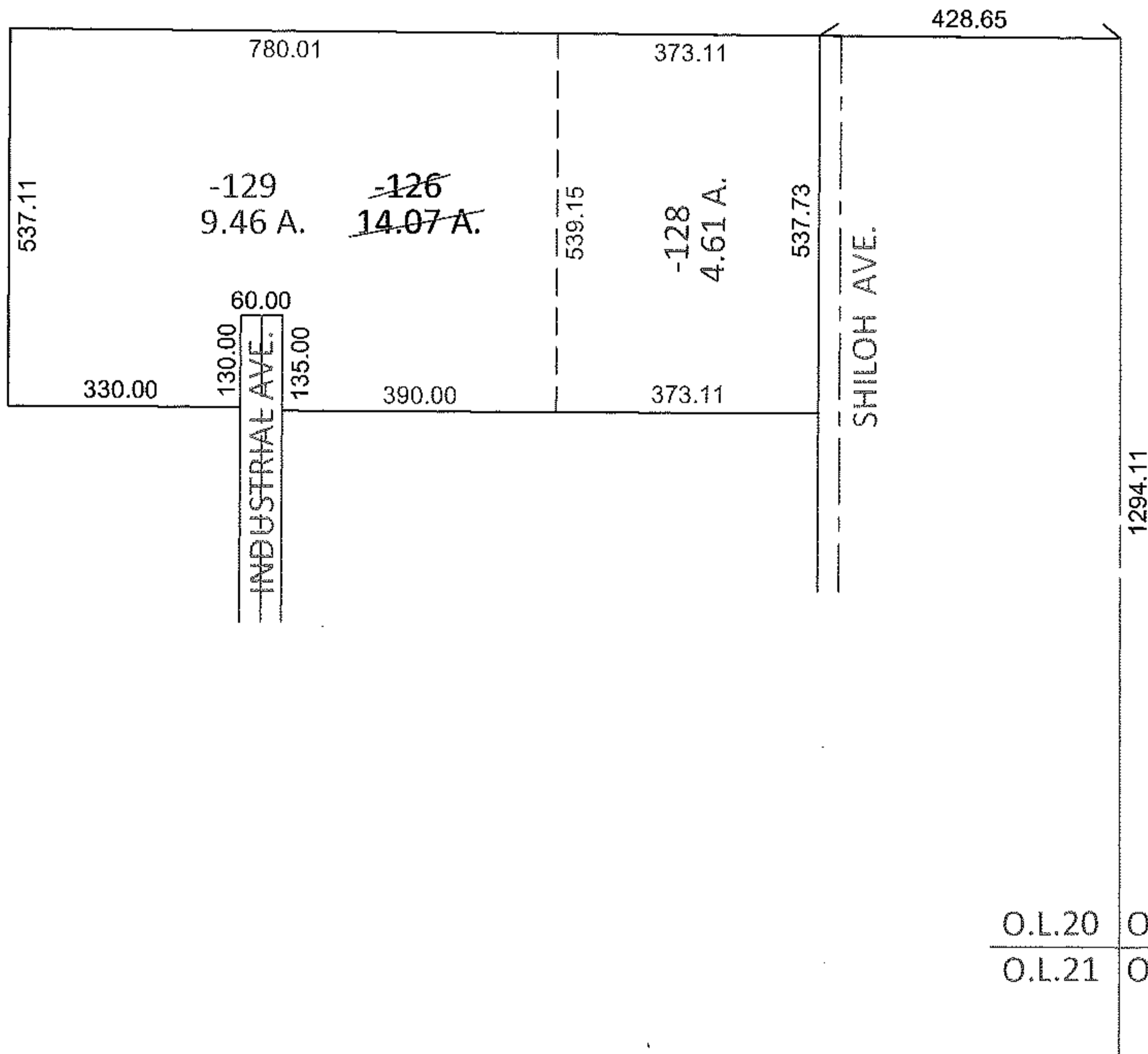
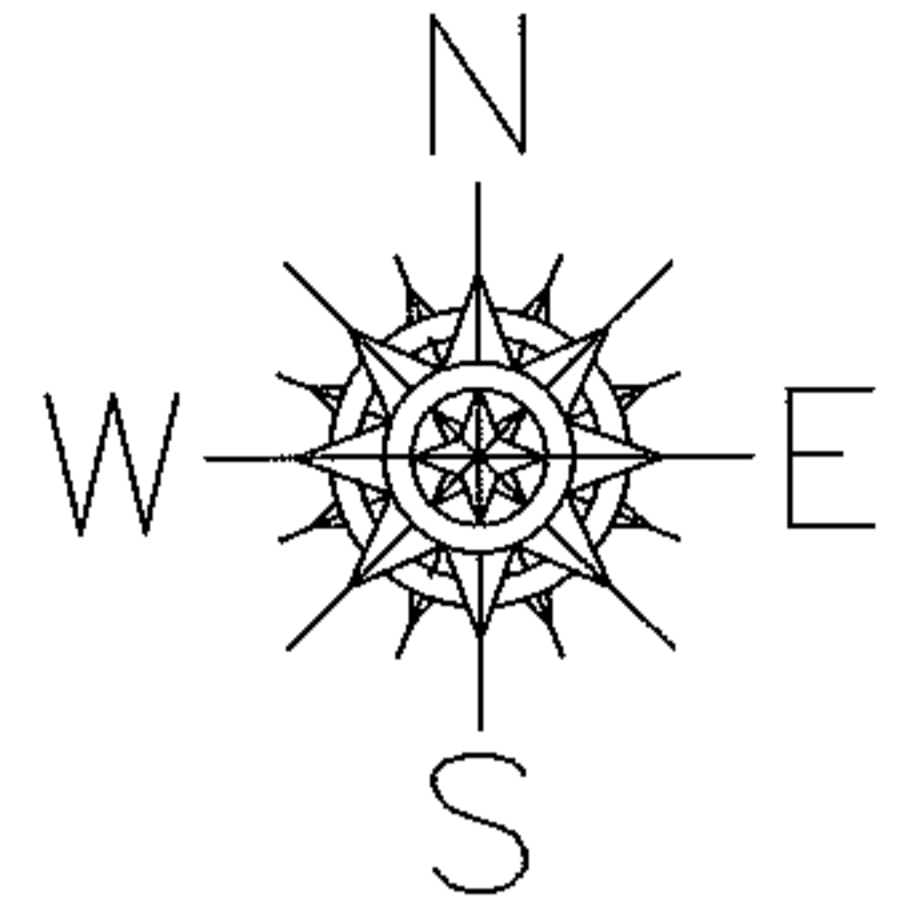
RASTER

PARENT PARCEL: 18-00-020-000-126

CHILD PARCEL: 18-00-020-000-128, -129

STARTING POINT: SOUTHEAST CORNER OF O.L.20

11-02945



SPLITS/DEEDS PROCESSED

LORAIN COUNTY TAX MAP DEPARTMENT
226 MIDDLE AVE. ELYRIA, OHIO

SURVEYED BY: DANA ANDREW PARSELL
 CLOSURE: .01:10,000
 MAP PAGE(S): 18-00-020-D
 APPROVED BY: RRM DATE: 9-6-11
 SCALE: 1"= 300 PRIOR INST.: DV 1396/747