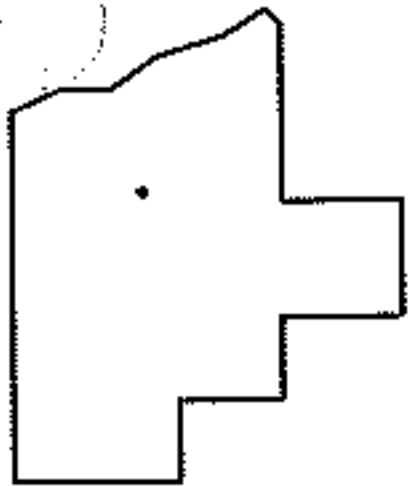
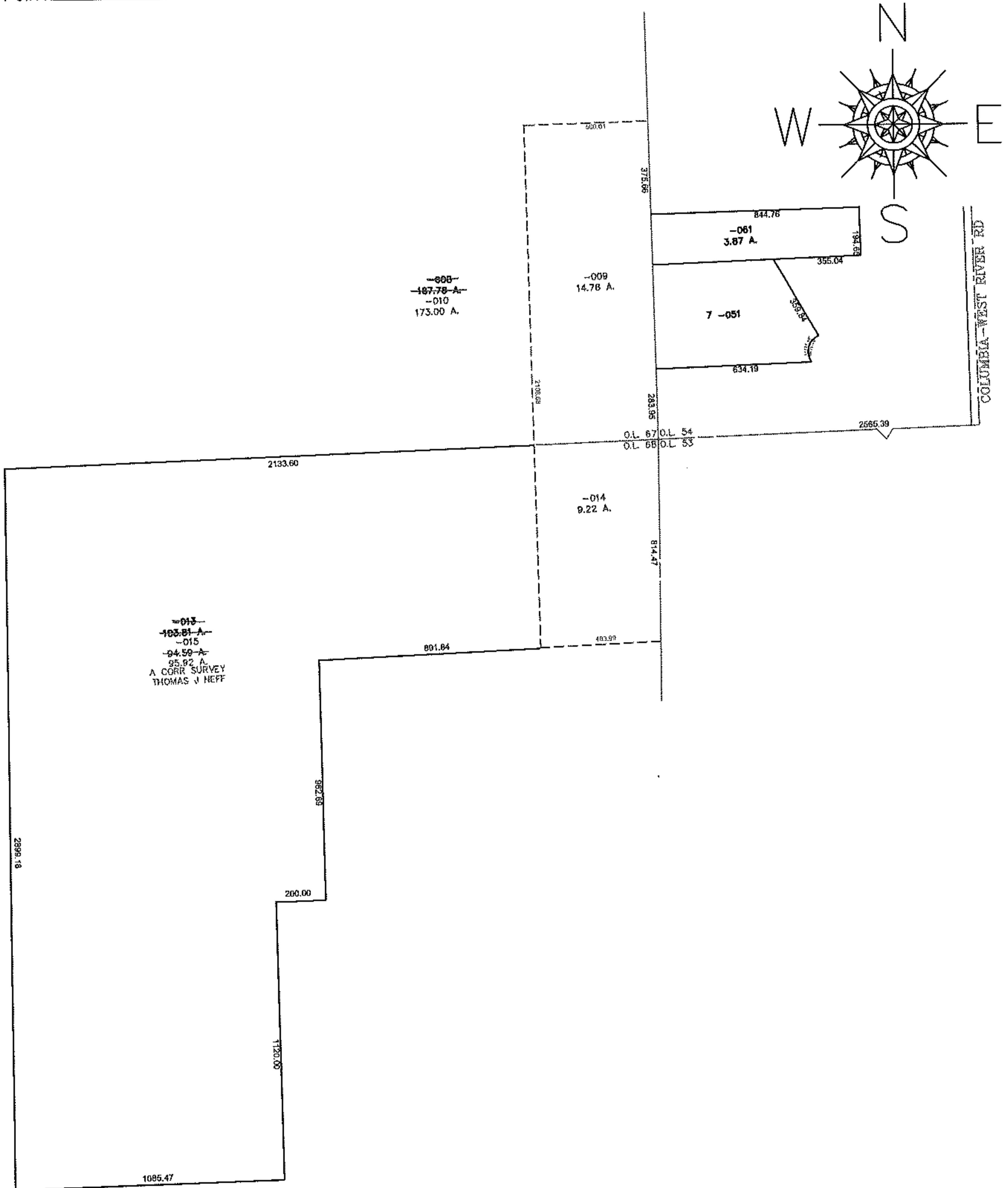


RASTER

PARENT PARCEL: 12-00-067-000-008, 12-00-068-000-013, 12-00-054-000-051, -051  
CHILD PARCEL: 12-00-067-000-009, -010 12-00-068-000-014, -015  
STARTING POINT: CENTERLINE OF COLUMBIA-WEST RIVER RD & O.L. 54

11-02944



**SPLITS/DEEDS PROCESSED**

LORAIN COUNTY TAX MAP DEPARTMENT  
226 MIDDLE AVE. ELYRIA, OHIO

SURVEYED BY: THOMAS J NEFF  
 CLOSURE: 0.00 : 10.000  
 MAP PAGE(S): 12-F & 12-00-066-B  
 APPROVED BY: JAH DATE: 8/23/2011  
 SCALE: 1" = 600 PRIOR INSTRUMENT: DV 1314/98

*Thomas J Neff*