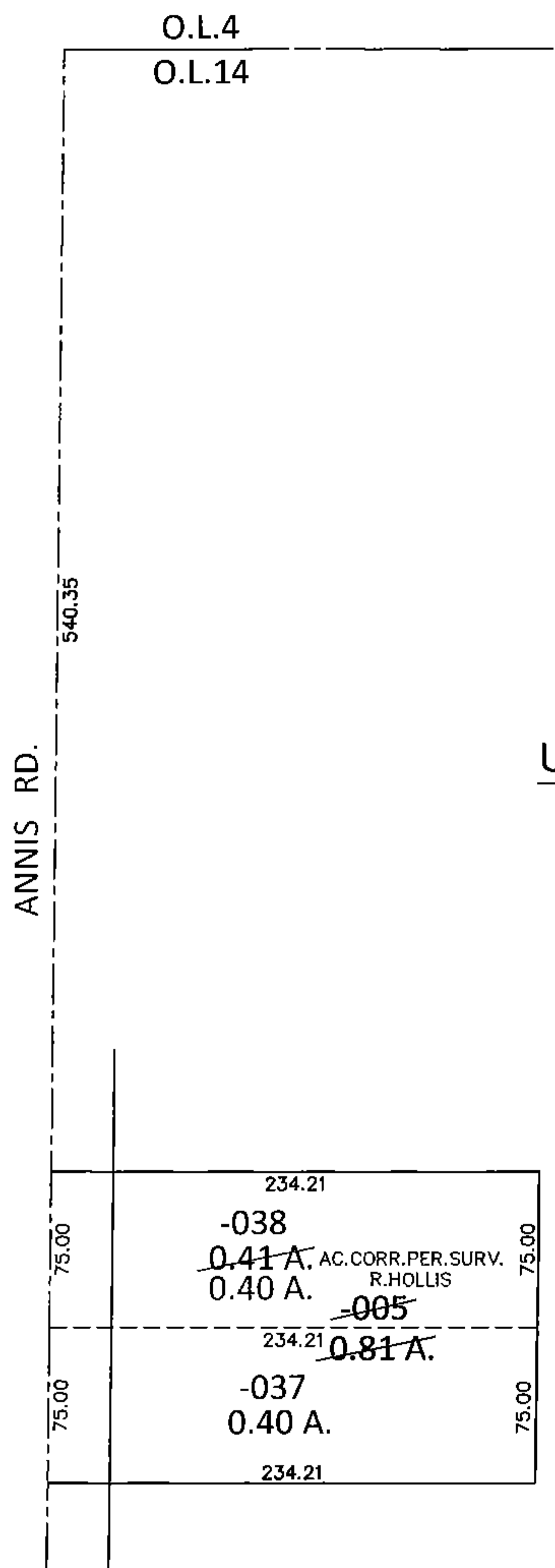
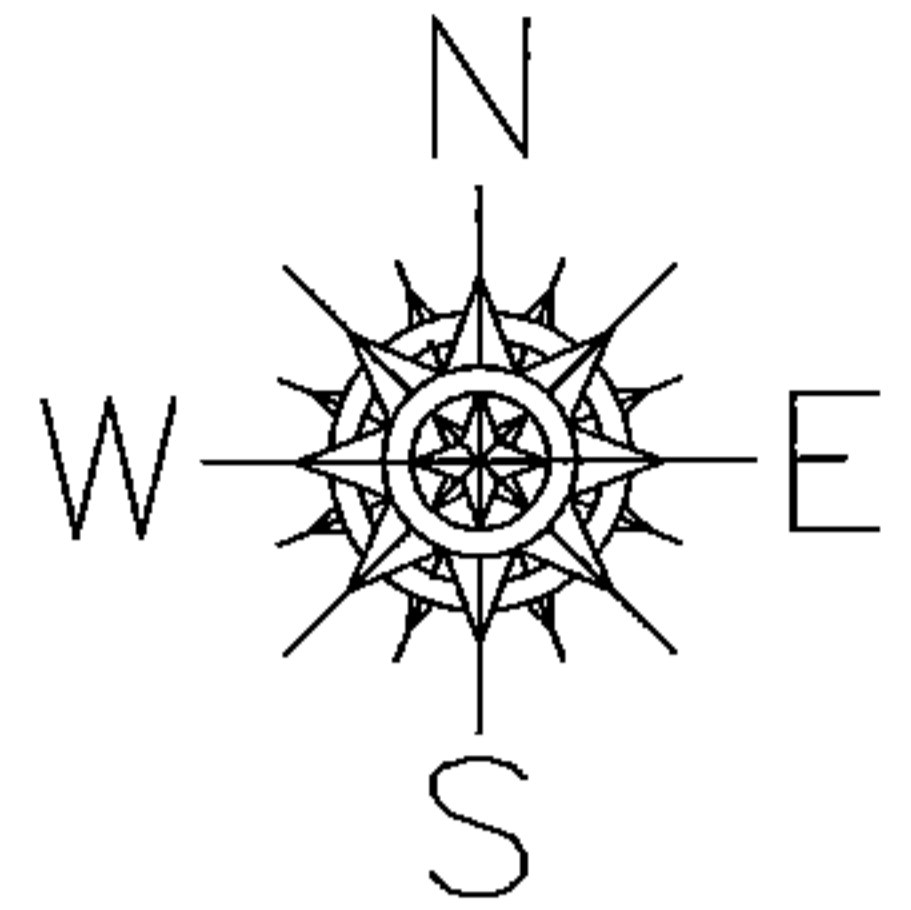
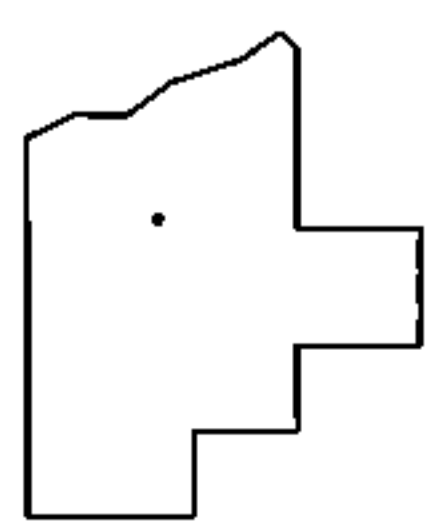


PARENT PARCEL: 09-00-014-102-005
CHILD PARCEL: 09-00-014-102-037, -038
STARTING POINT: INTERSECTION OF C/L OF ANNIS RD. AND NORTH LINE OF O.L.14

14-02943-U



UNCOMBINATION



SPLITS/DEEDS PROCESSED
LORAIN COUNTY TAX MAP DEPARTMENT
226 MIDDLE AVE. ELYRIA, OHIO

SURVEYED BY: RAY E. HOLLIS
CLOSURE: .00:10,000
MAP PAGE(S): 9-00-014-B
APPROVED BY: RRM DATE: 5-20-14
SCALE: 1" = 100 PRIOR INST.: 20060170954