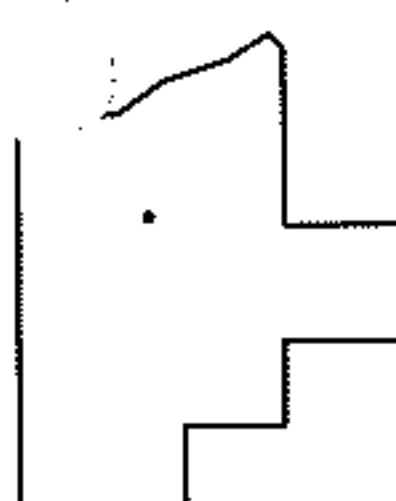
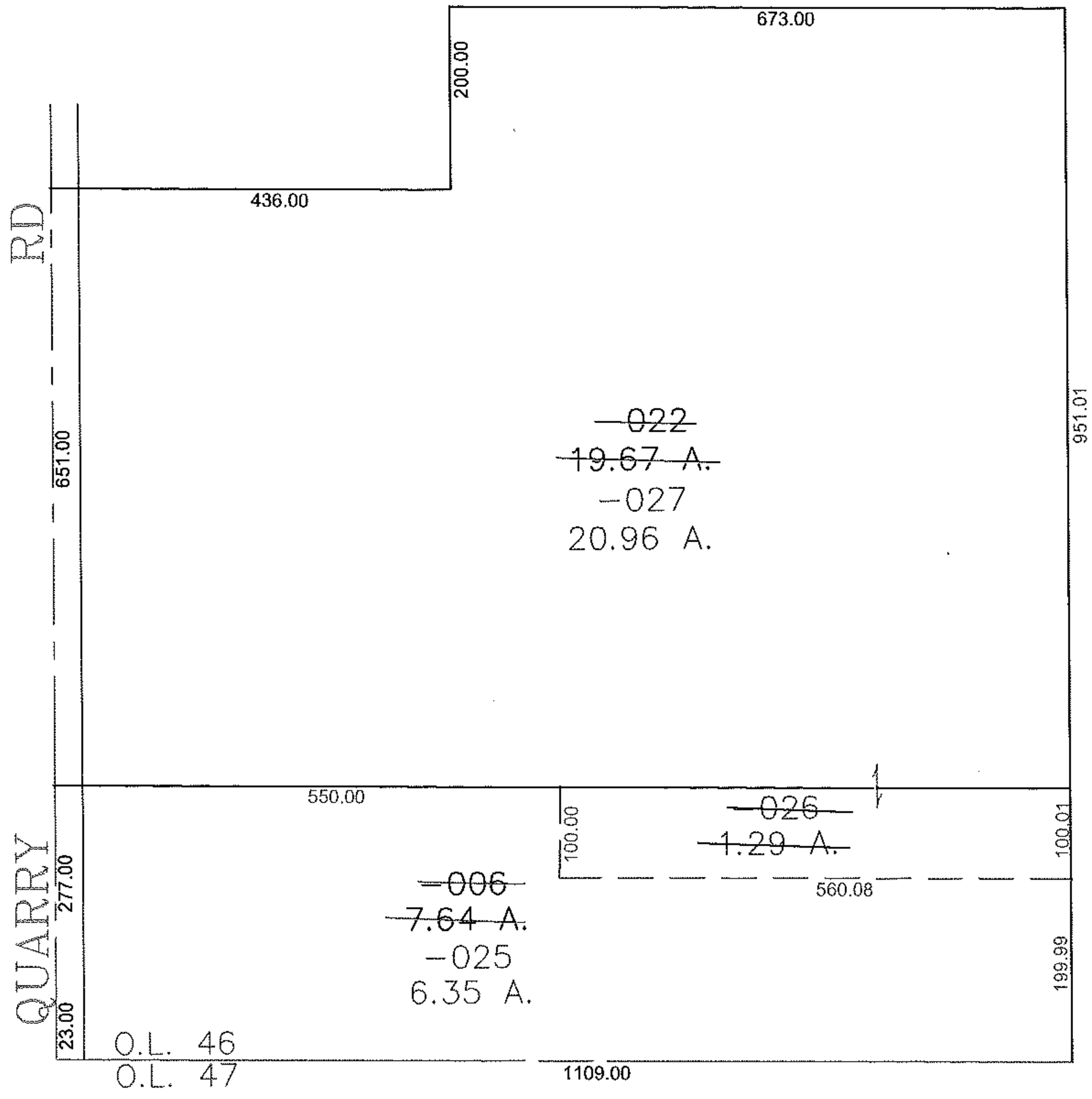
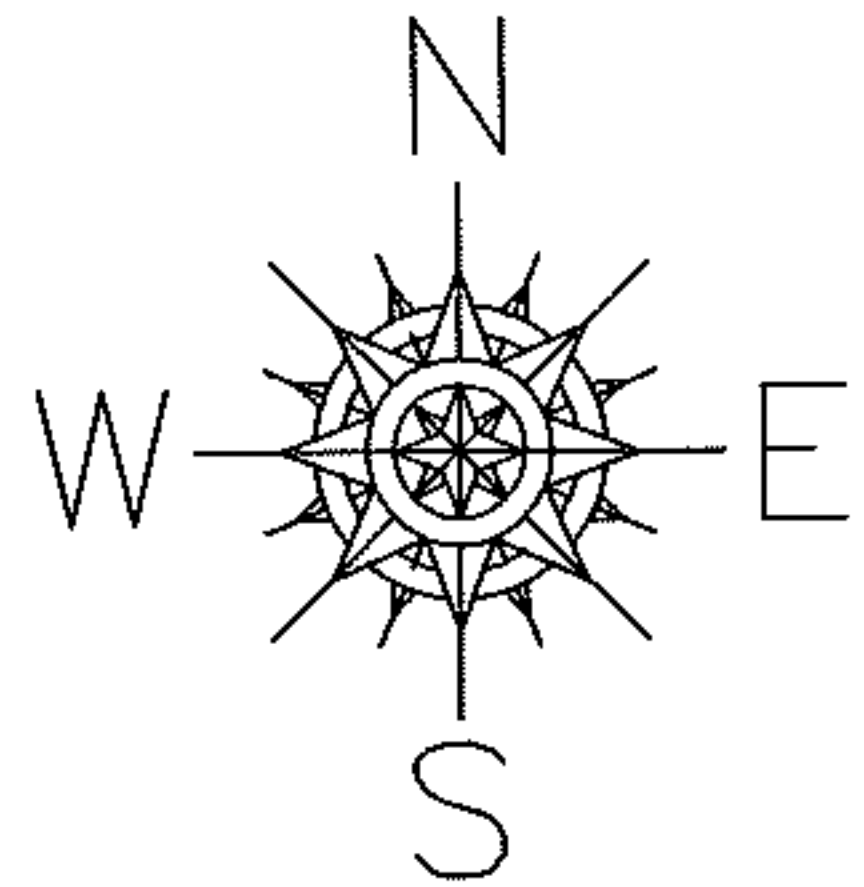


PARENT PARCEL: 18-00-046-000-006, -022
CHILD PARCEL: 18-00-046-000-025, -026M -027
STARTING POINT: CENTERLINE OF QUARRY RD & O.L. 46

11-02940



SPLITS/DEEDS PROCESSED
LORAIN COUNTY TAX MAP DEPARTMENT
226 MIDDLE AVE. ELYRIA, OHIO

SURVEYED BY: THOMAS SNEZAK
CLOSURE: 0.00 : 10,000
MAP PAGE(S): 18-E
APPROVED BY: JAH DATE: 8-17-2011
SCALE: 1" = 200 PRIOR INSTRUMENT: DV 1191/592