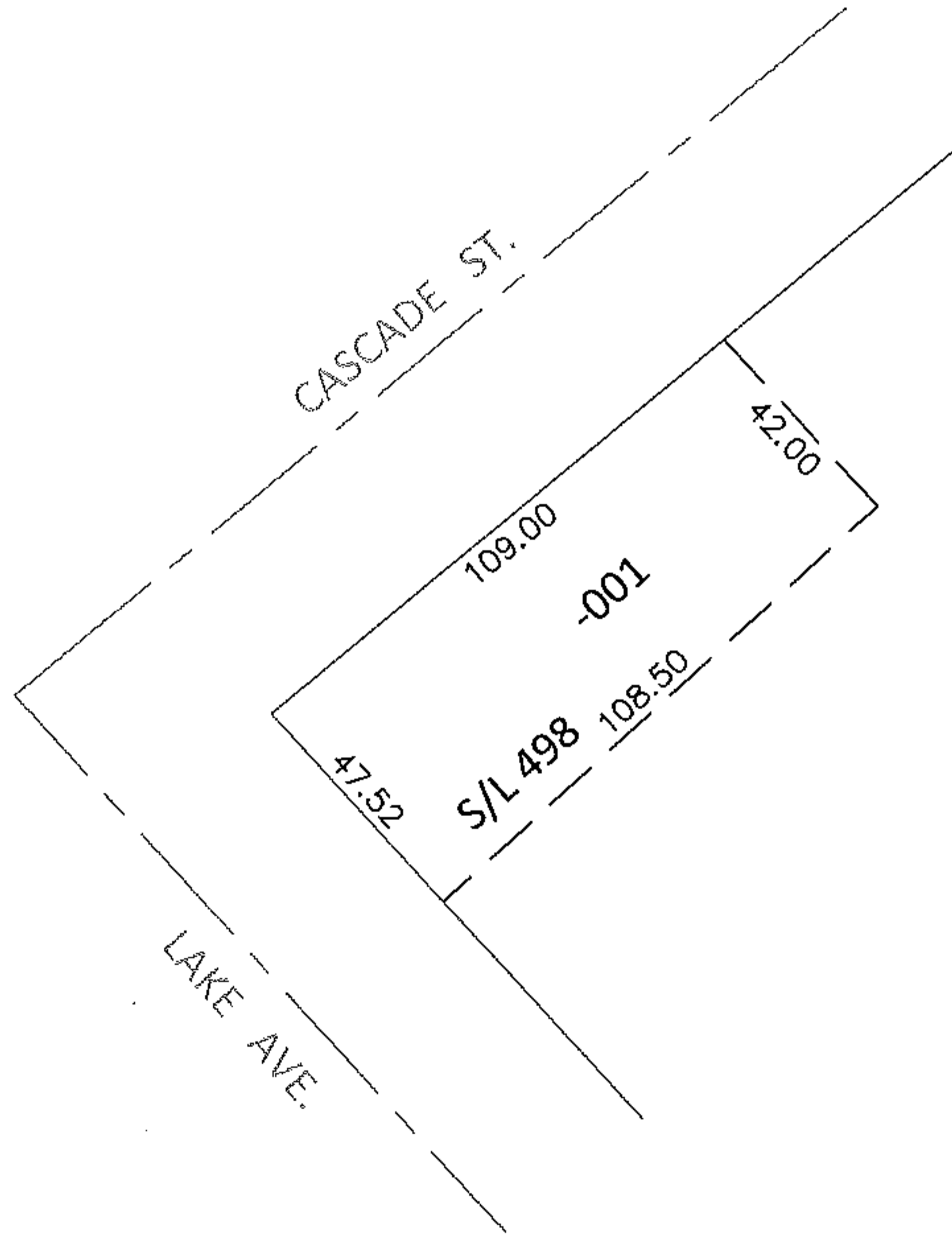
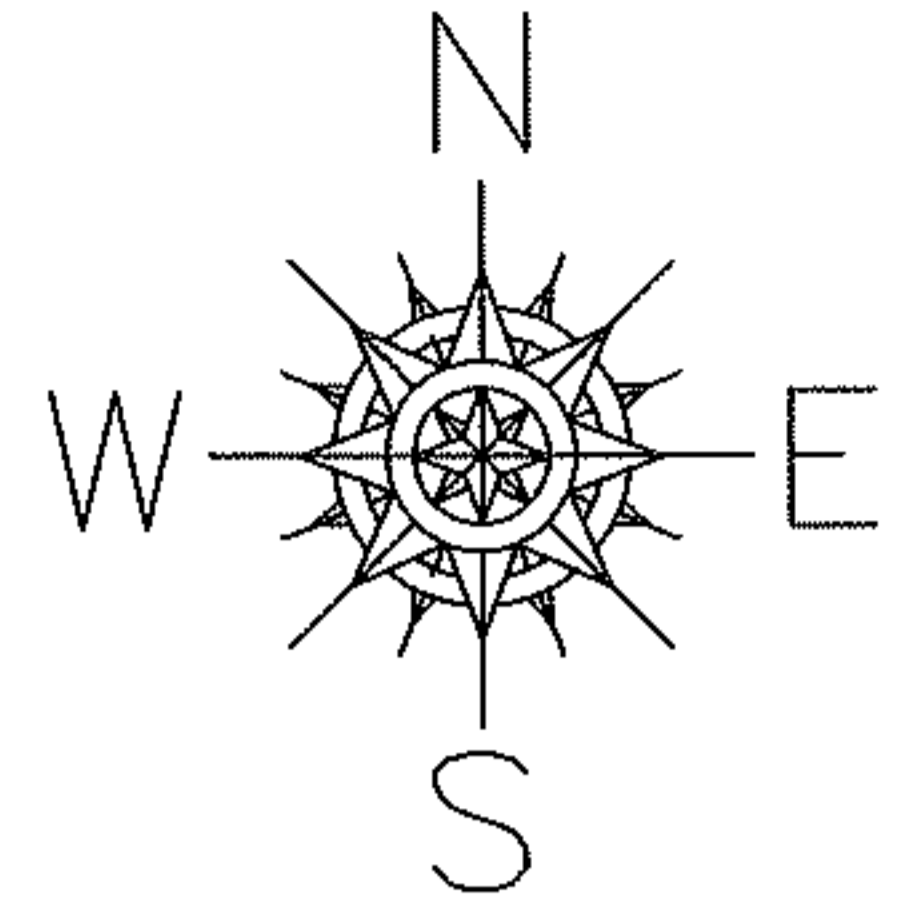


PARENT PARCEL: 06-26-094-103-001

CHILD PARCEL: _____

14-02939-C

STARTING POINT: MOST WESTERLY CORNER OF LAND CONVEYED TO JOHN TITE(DV 73 PG 302)



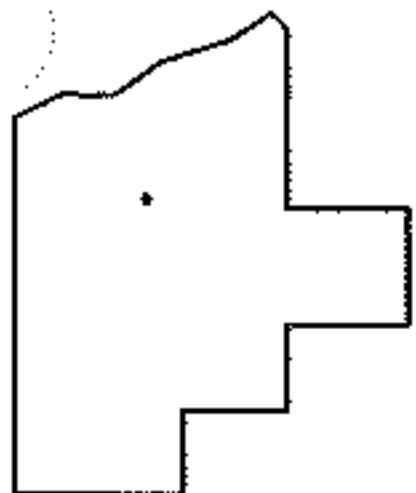
FRONTAGE & DEPTH CORRECTION

06-26-094-103-001

47.52 X 109

~~49 X 109~~

PER PRIOR DEEDS



SPLITS/DEEDS PROCESSED

LORAIN COUNTY TAX MAP DEPARTMENT
226 MIDDLE AVE. ELYRIA, OHIO

SURVEYED BY: N/A

CLOSURE: N/A

MAP PAGE(S): 6-101

APPROVED BY: RRM DATE: 5-12-14

SCALE: 1"= 50' PRIOR INST.: 20130482207