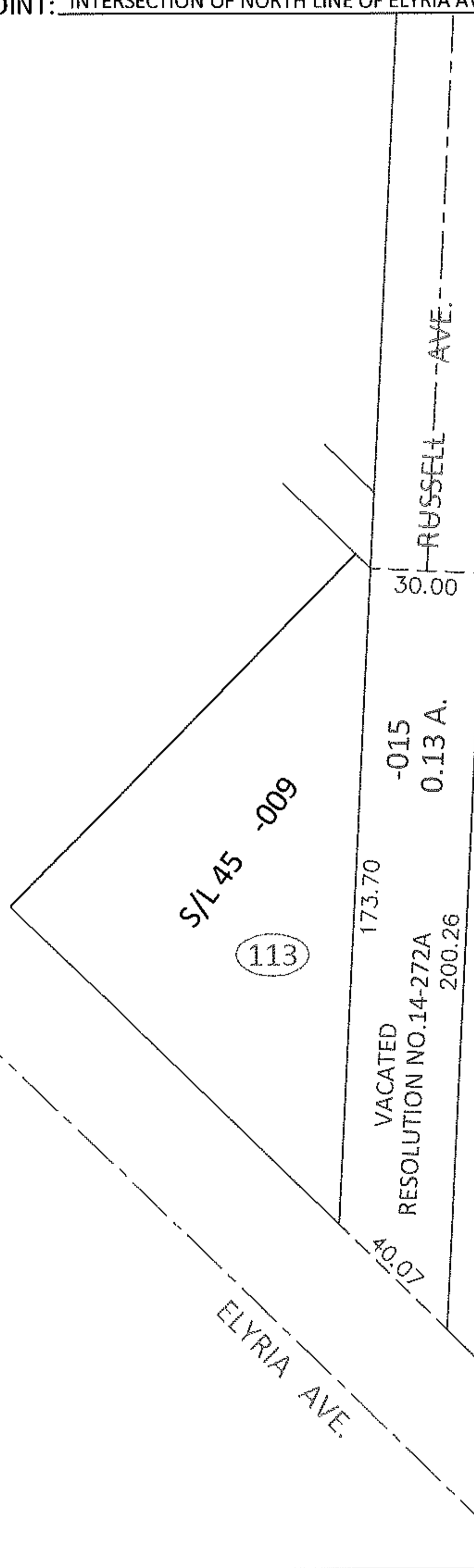
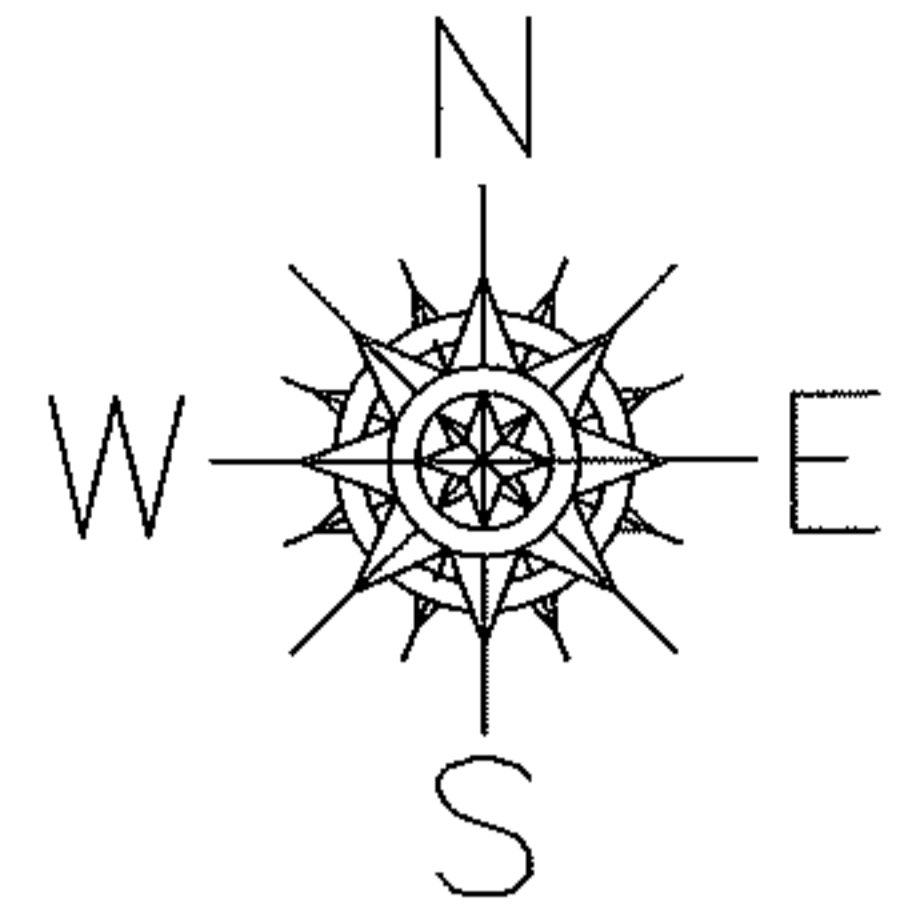


PARENT PARCEL: \_\_\_\_\_

CHILD PARCEL: 03-00-108-113-015

14-02934-V

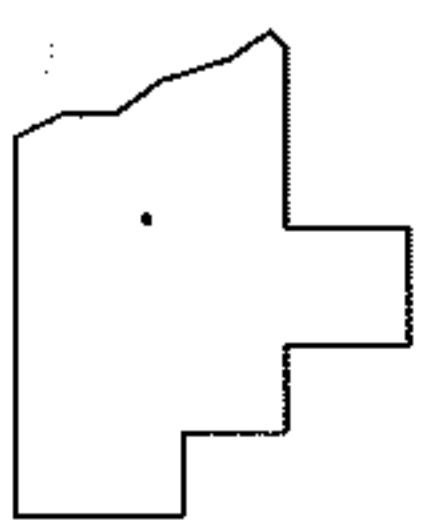
STARTING POINT: INTERSECTION OF NORTH LINE OF ELYRIA AVE. AND WEST LINE OF RUSSELL AVE.



(114)  
-004  
2.16 A.

RUSSELL AVE. VACATION

ADD TO DUP.  
03-00-108-113-015  
0.13 A.  
PER RESOLUTION NO. 14-272A



SPLITS/DEEDS PROCESSED

LORAIN COUNTY TAX MAP DEPARTMENT  
226 MIDDLE AVE. ELYRIA, OHIO

SURVEYED BY: BRAMHALL  
CLOSURE: .01:10,000  
MAP PAGE(S): 3-00-108-B  
APPROVED BY: RRM DATE: 5-5-14  
SCALE: 1"= 50' PRIOR INST.: N/A