

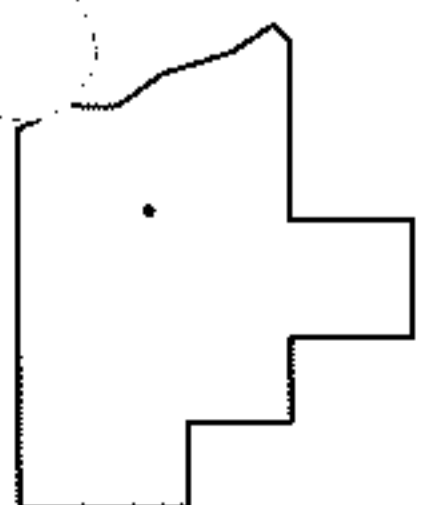
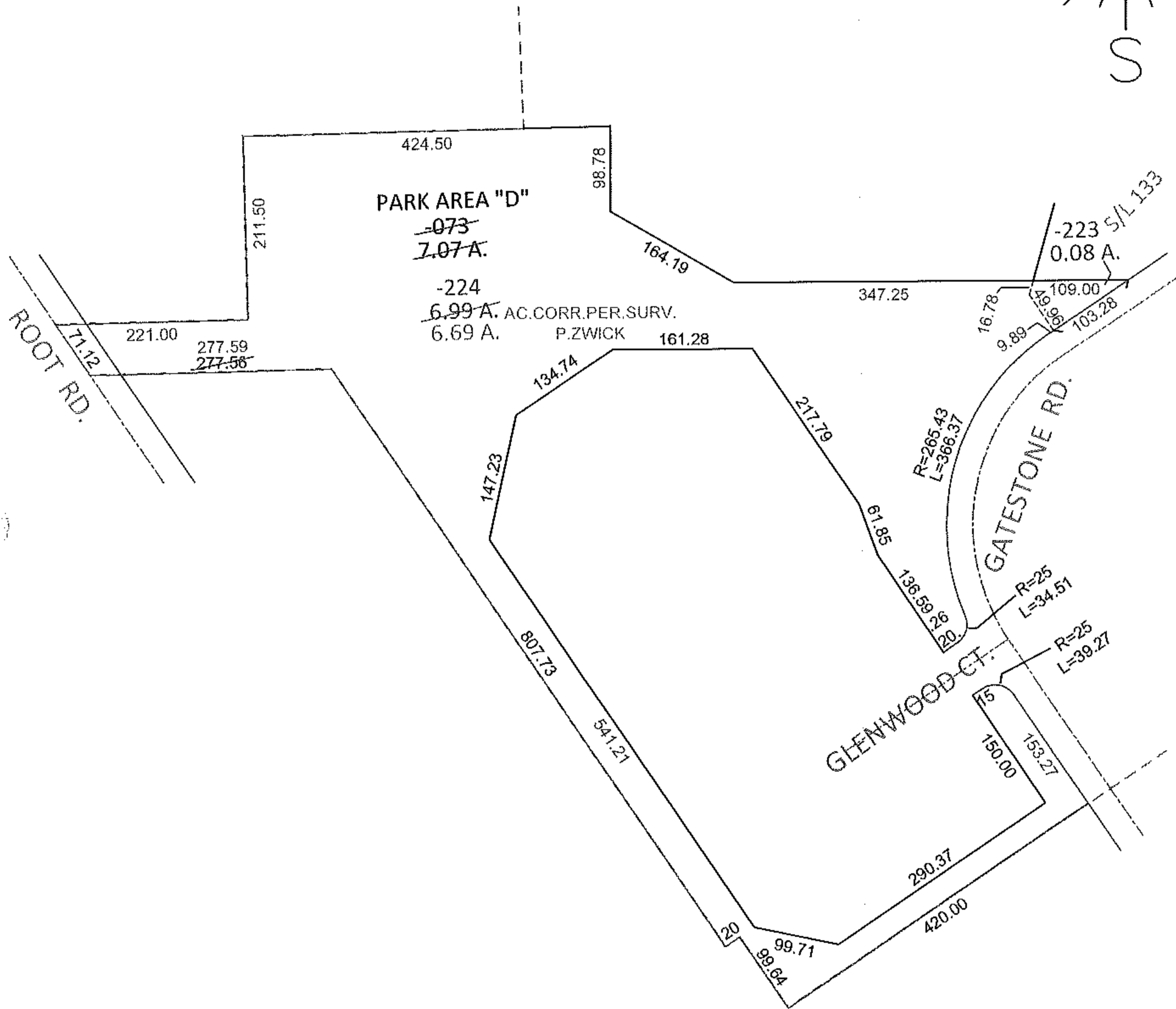
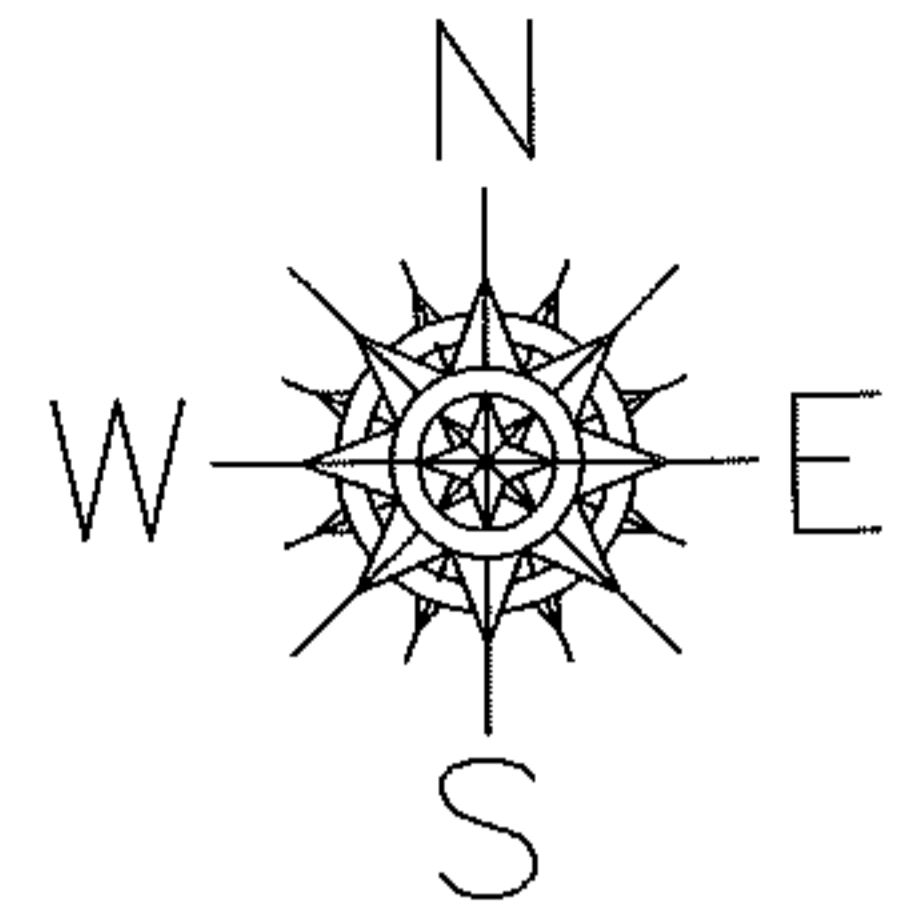
RASGER

PARENT PARCEL: 07-00-012-102-073

CHILD PARCEL: 07-00-012-102-223, -224

STARTING POINT: SOUTHEAST CORNER OF S/L 132 RIDGEVILLE HOMES INC. SUB. NO.2 (VOL.57 PG.70)

11-02930



**SPLITS/DEEDS PROCESSED**

LORAIN COUNTY TAX MAP DEPARTMENT  
226 MIDDLE AVE. ELYRIA, OHIO

SURVEYED BY: PETER D. ZWICK

CLOSURE: .01:10,000

MAP PAGE(S): 7-00-012-B

APPROVED BY: RRM DATE: 7-12-11

SCALE: 1" = 200 PRIOR INST.: 20060139145