

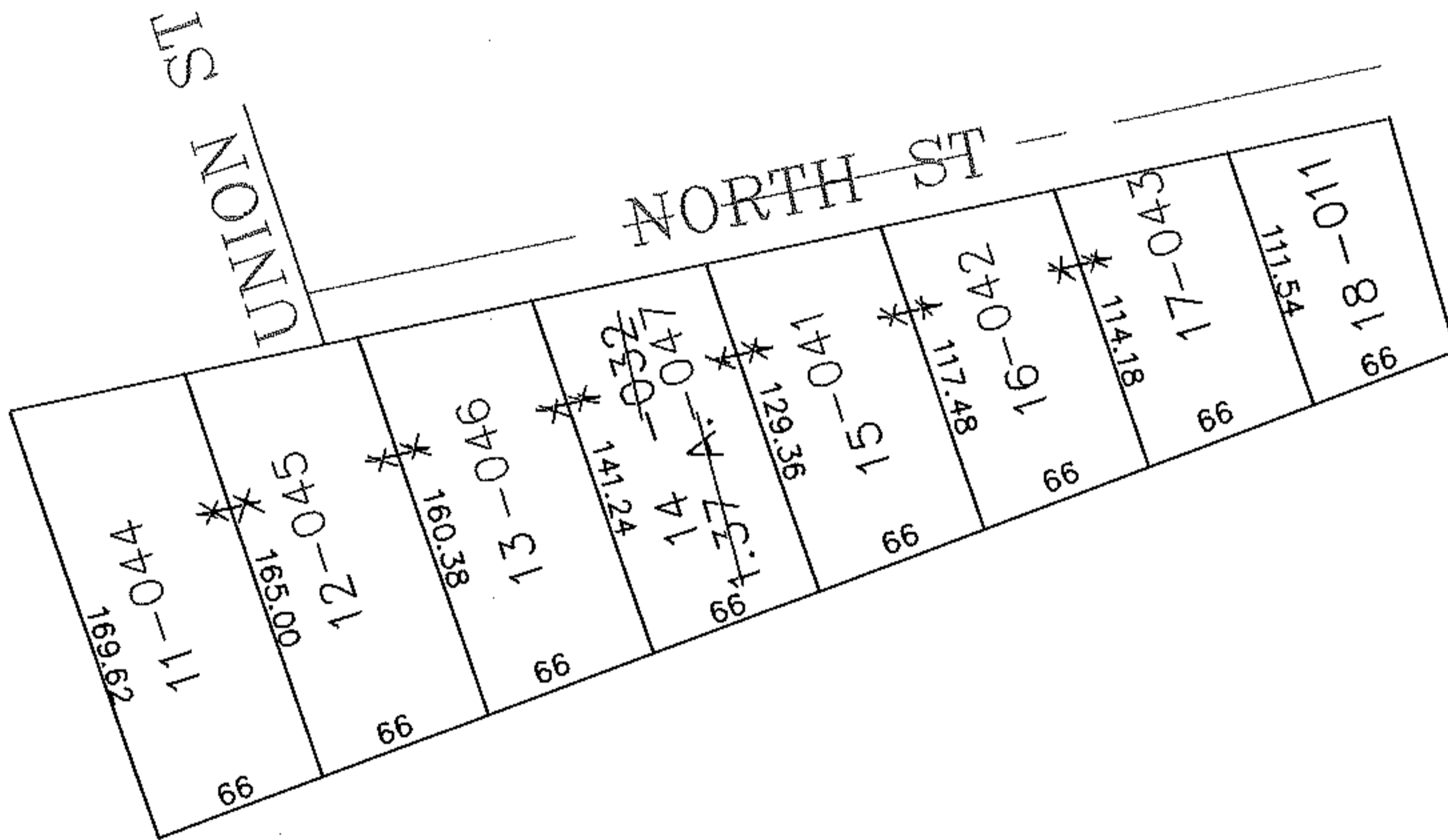
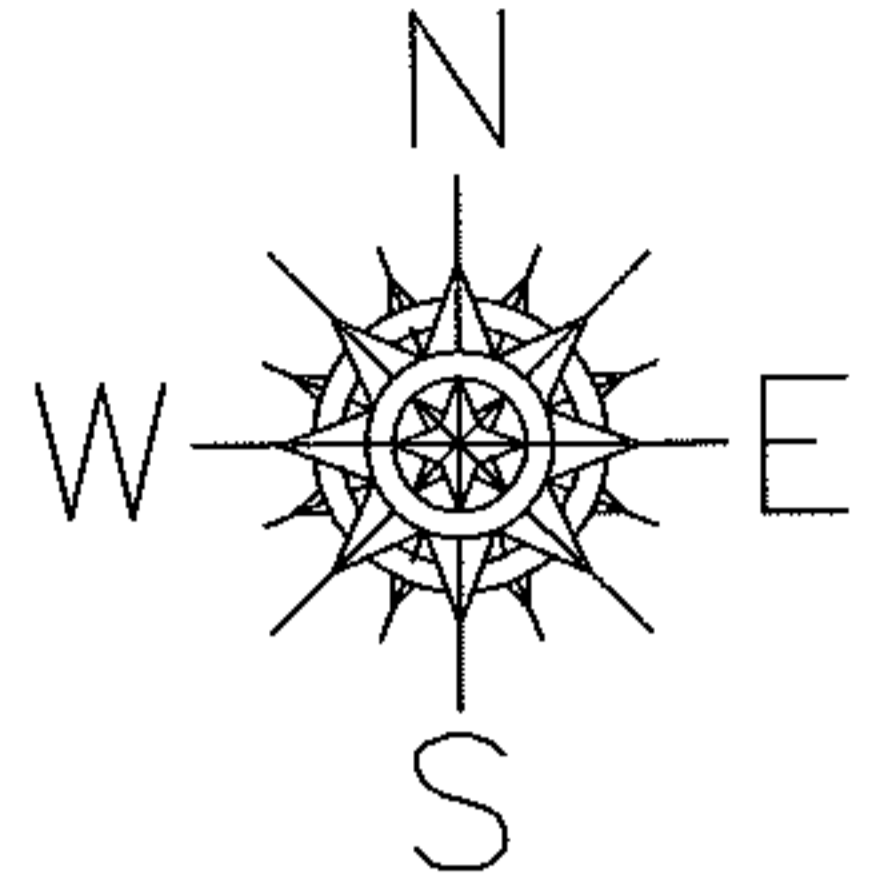
RASTER

PARENT PARCEL: 20-05-023-101-032, -011

CHILD PARCEL: 20-05-023-101-041 THRU -047 & -011

STARTING POINT: SIDELINE OF S/L 11 IN D GILMORE'S ADDITION

11-02929



SPLITS/DEEDS PROCESSED

LORAIN COUNTY TAX MAP DEPARTMENT
226 MIDDLE AVE. ELYRIA, OHIO

SURVEYED BY: PLAT VOL 1 PG 8

CLOSURE: 0.00 : 10.000

MAP PAGE(S): 20-05-023-B

APPROVED BY: JAH DATE: 6-17-2011

SCALE: 1" = 100' PRIOR INSTRUMENT: PL VL 1 PG 8