

PARENT PARCEL: 02-01-001-106-011, -018, -019  
 CHILD PARCEL: 02-01-001-106-020 THRU -022  
 STARTING POINT: S/L'S 2 THRU 4 IN GAWNS FIRST ADD. (VOL.2 PG.15)

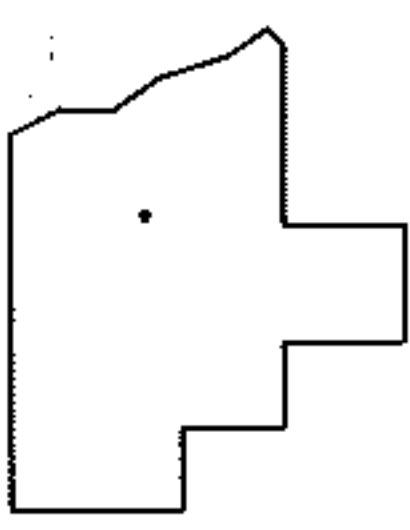
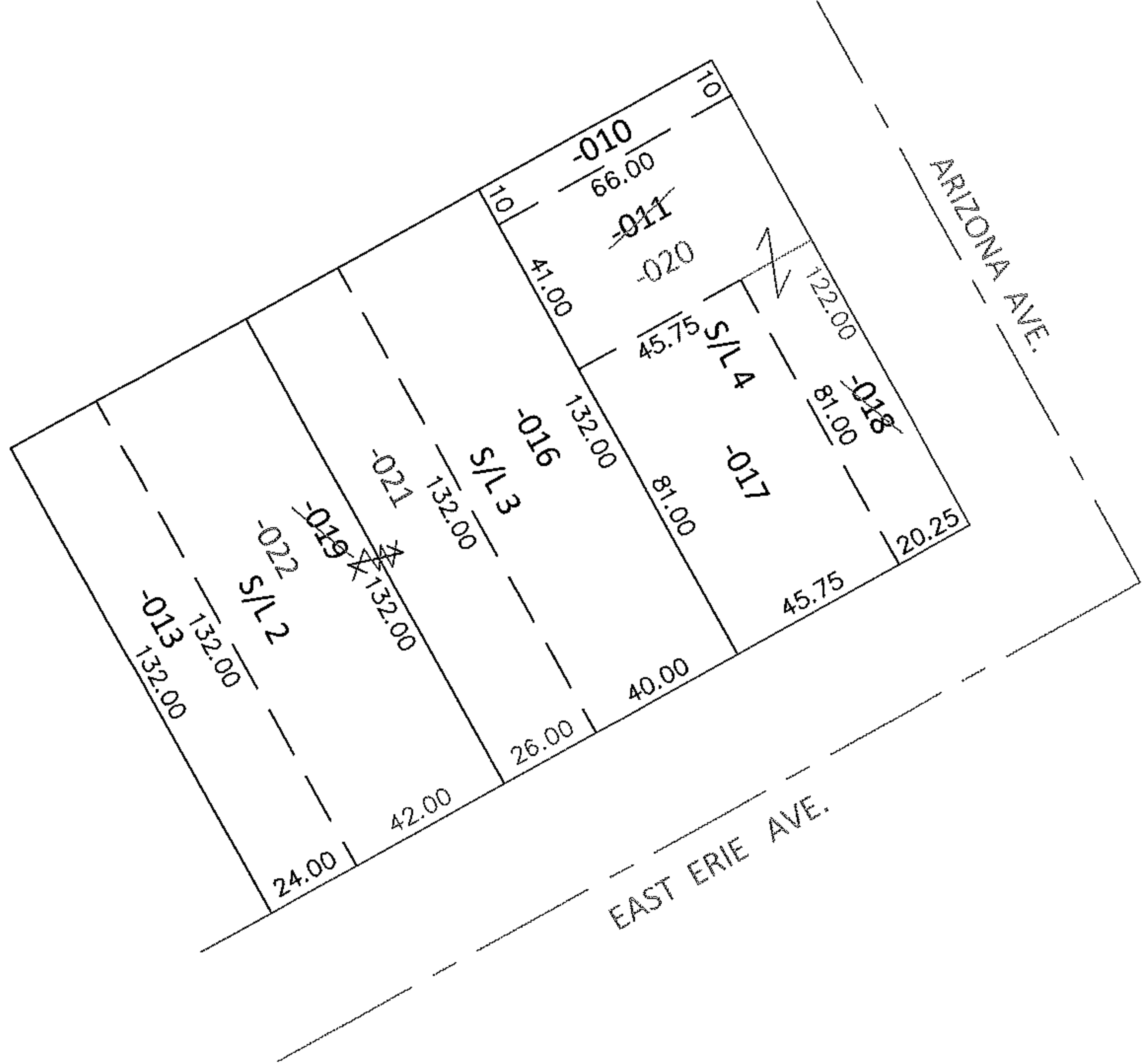
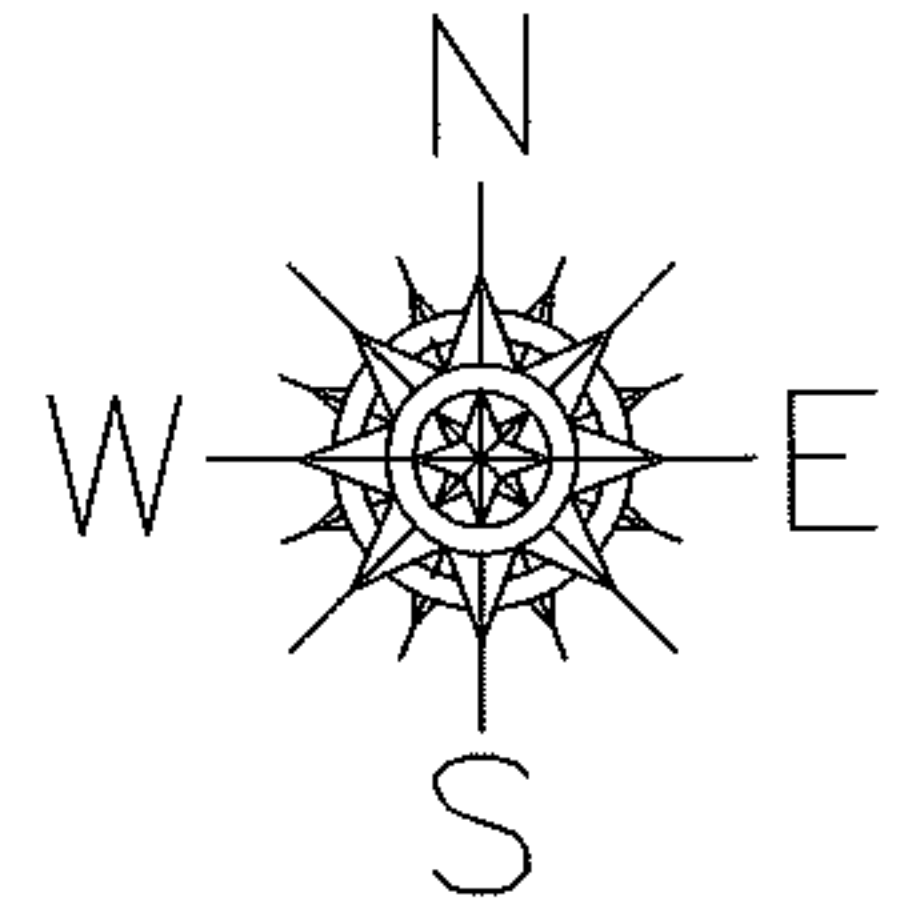
14-02926-U

COMBINATION CORRECTION

~~02-01-001-106-011~~      ~~02-01-001-106-018~~  
~~41 X 66~~                      ~~20.25 X 81~~  
 02-01-001-106-020  
 122 X 66 IRR

UNCOMBINATION

~~02-01-001-106-019~~  
~~68 X 132~~  
 02-01-001-106-021      02-01-001-106-022  
 26 X 132                      42 X 132



SPLITS/DEEDS PROCESSED  
 LORAIN COUNTY TAX MAP DEPARTMENT  
 226 MIDDLE AVE. ELYRIA, OHIO

SURVEYED BY: N/A  
 CLOSURE: N/A  
 MAP PAGE(S): 2-01-003-A  
 APPROVED BY: RRM      DATE: 4-18-14  
 SCALE: 1"= 50'      PRIOR INST.: 20010737490