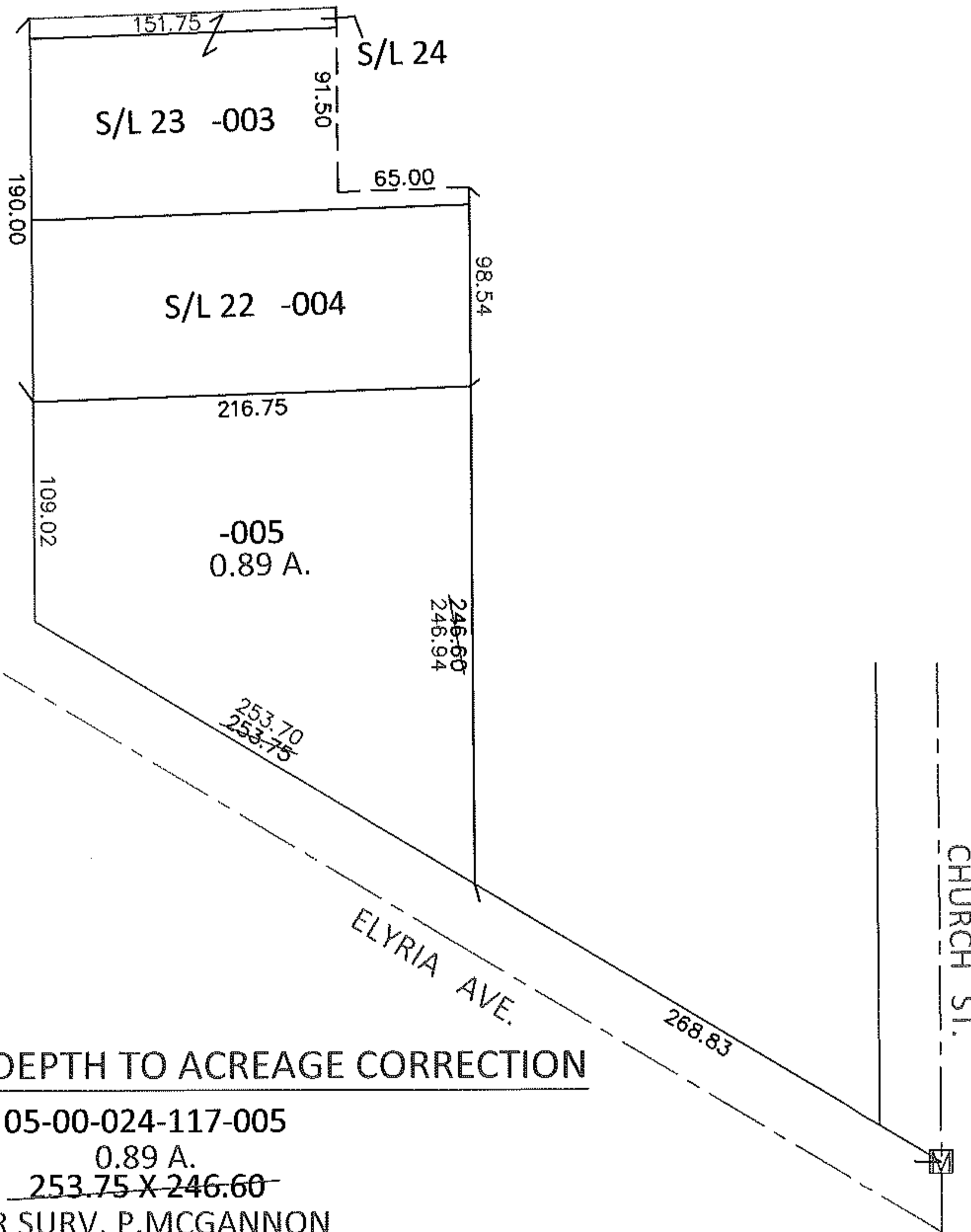
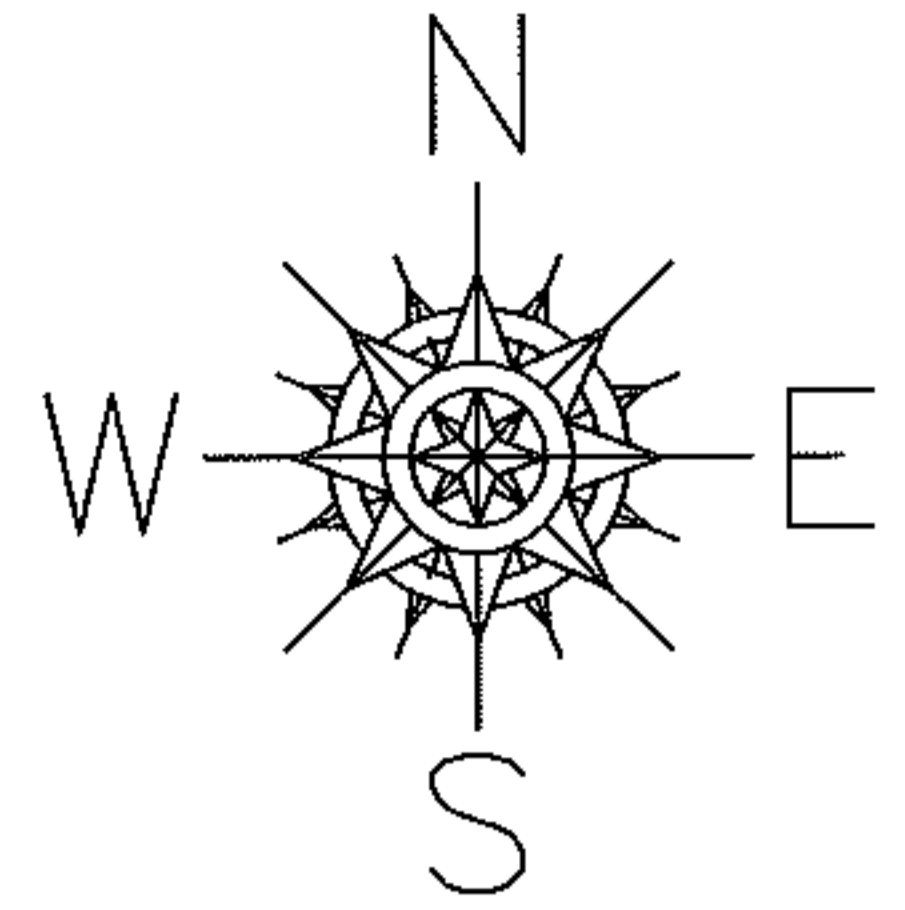


PARENT PARCEL: 05-00-024-117-003 THRU -005

CHILD PARCEL: _____

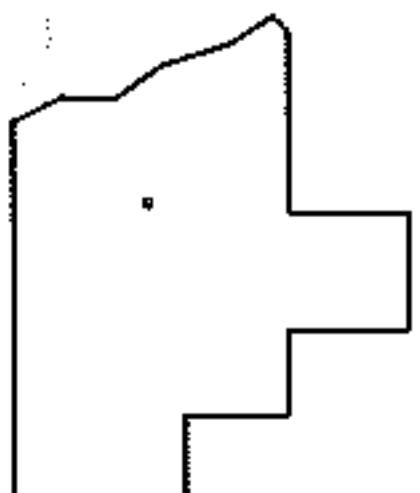
14-02923-C

STARTING POINT: AT A MON BOX AT THE INTERSECTION OF NORTH LINE OF ELYRIA AVE. AND C/L OF CHURCH ST.



FRONTAGE & DEPTH TO ACREAGE CORRECTION

05-00-024-117-005
 0.89 A.
~~253.75 X 246.60~~
 PER SURV. P.MCGANNON



SPLITS/DEEDS PROCESSED

LORAIN COUNTY TAX MAP DEPARTMENT
 226 MIDDLE AVE. ELYRIA, OHIO

SURVEYED BY: PATRICK A. MCGANNON
 CLOSURE: .01:10,000
 MAP PAGE(S): 5-00-024-A
 APPROVED BY: RRM DATE: 4-16-14
 SCALE: 1"= 100 PRIOR INST.: DV 1087/683