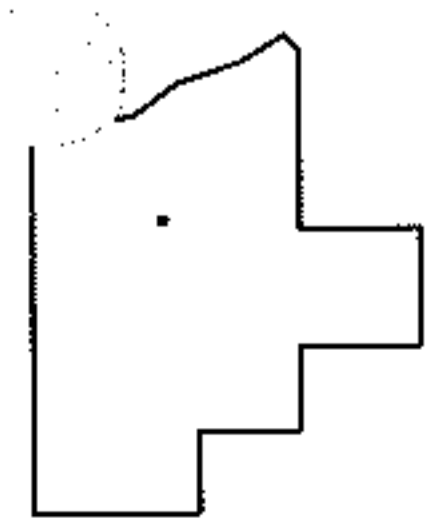
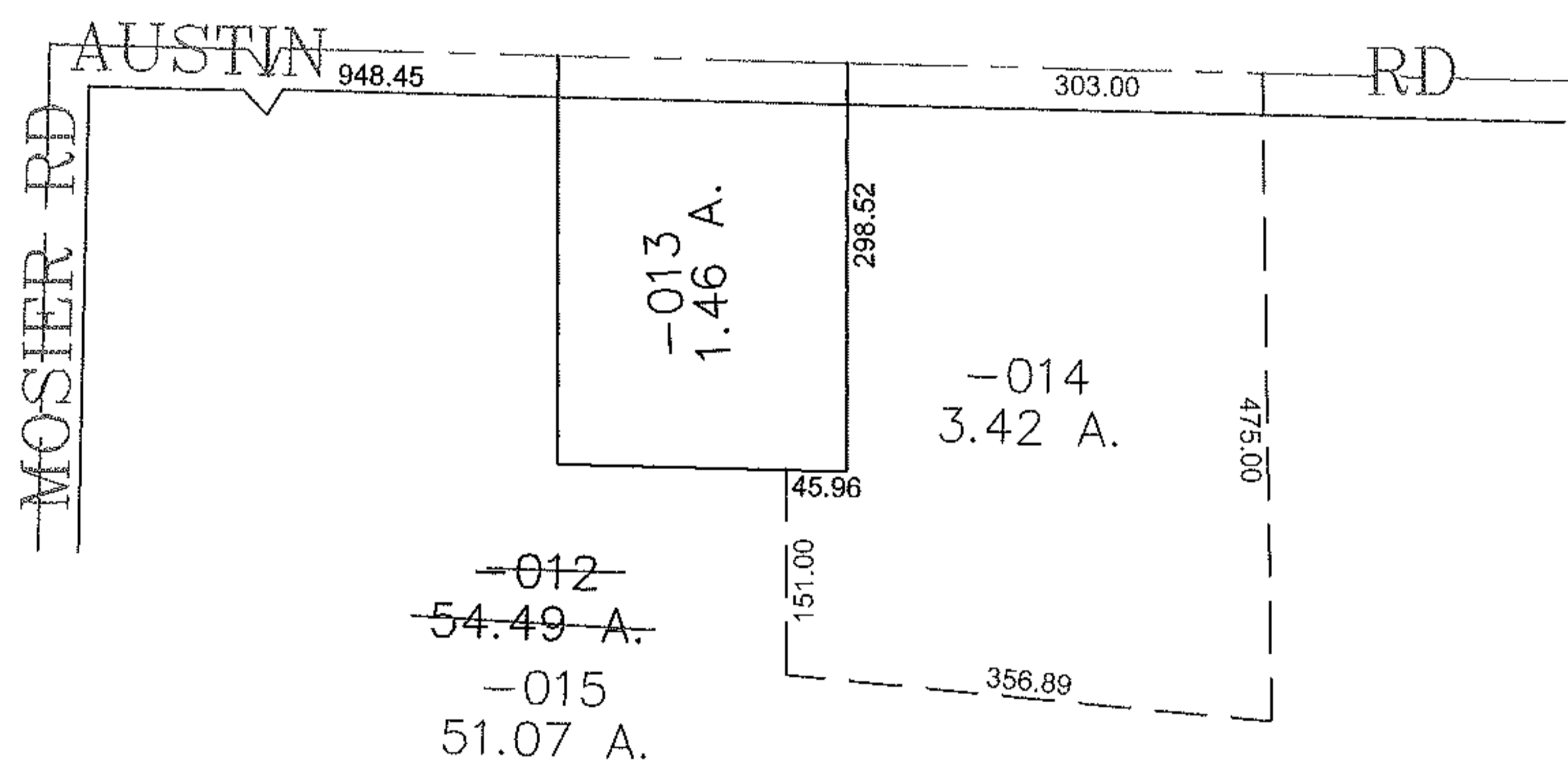
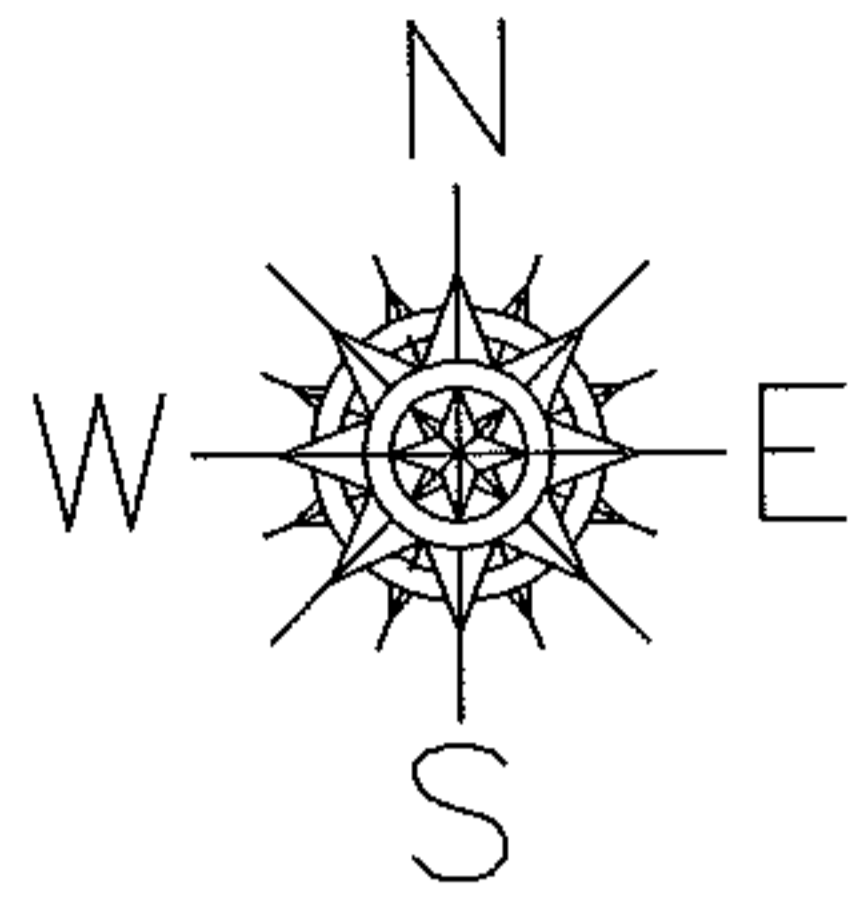


RASTER

PARENT PARCEL: 13-08-011-000-012  
CHILD PARCEL: 13-08-011-000-014, -015  
STARTING POINT: CENTERLINE OF AUSTIN RD & MOSIER RD

11-02922



**SPLITS/DEEDS PROCESSED**  
LORAIN COUNTY TAX MAP DEPARTMENT  
226 MIDDLE AVE. ELYRIA, OHIO

SURVEYED BY: PATRICK MCGANNON  
CLOSURE: 0.00 : 10.000  
MAP PAGE(S): 13-H  
APPROVED BY: JAH DATE: 5-13-2011  
SCALE: 1" = 200 PRIOR INSTRUMENT: 20110363162