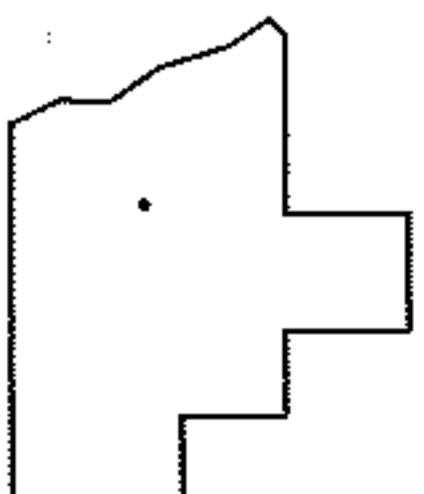
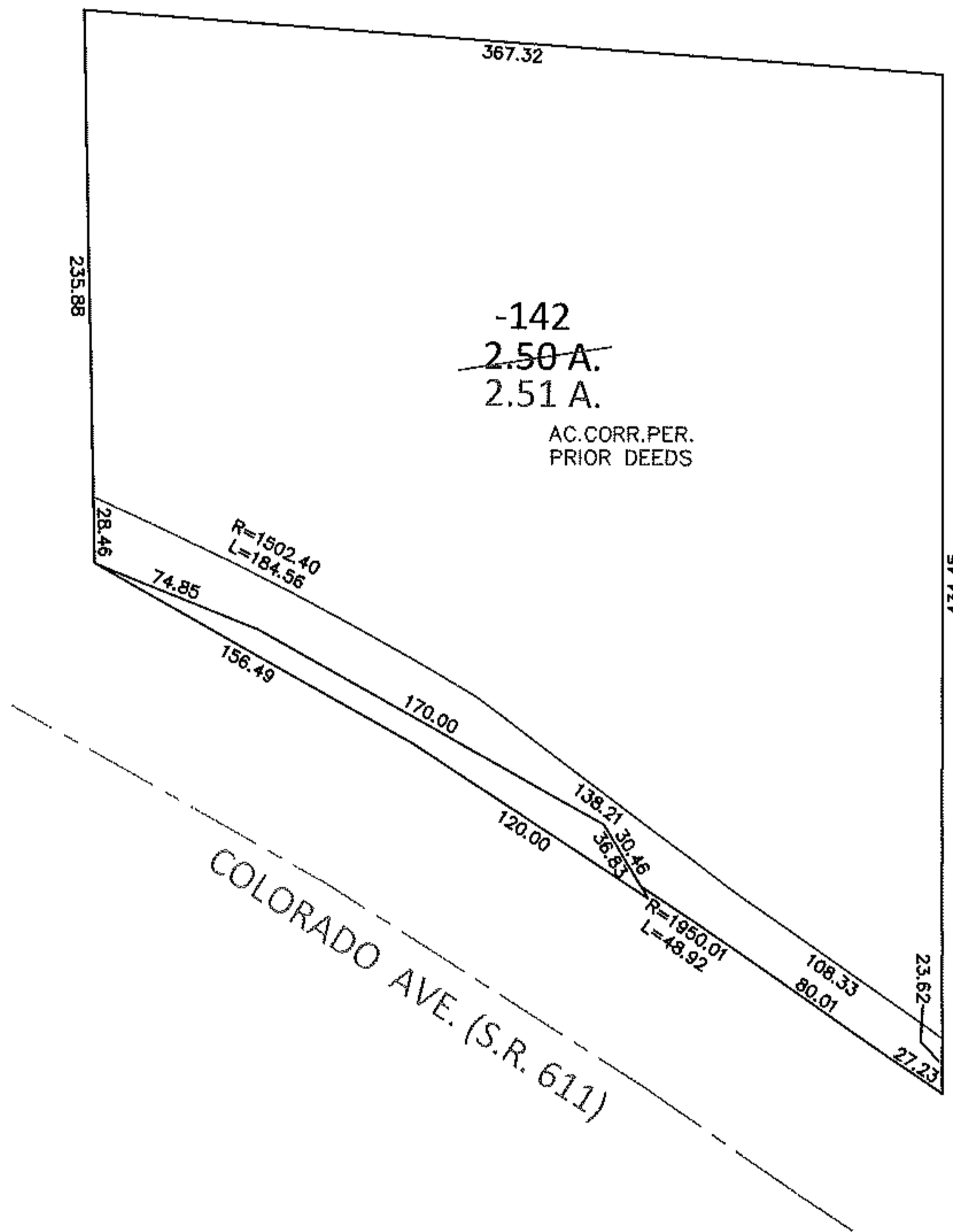
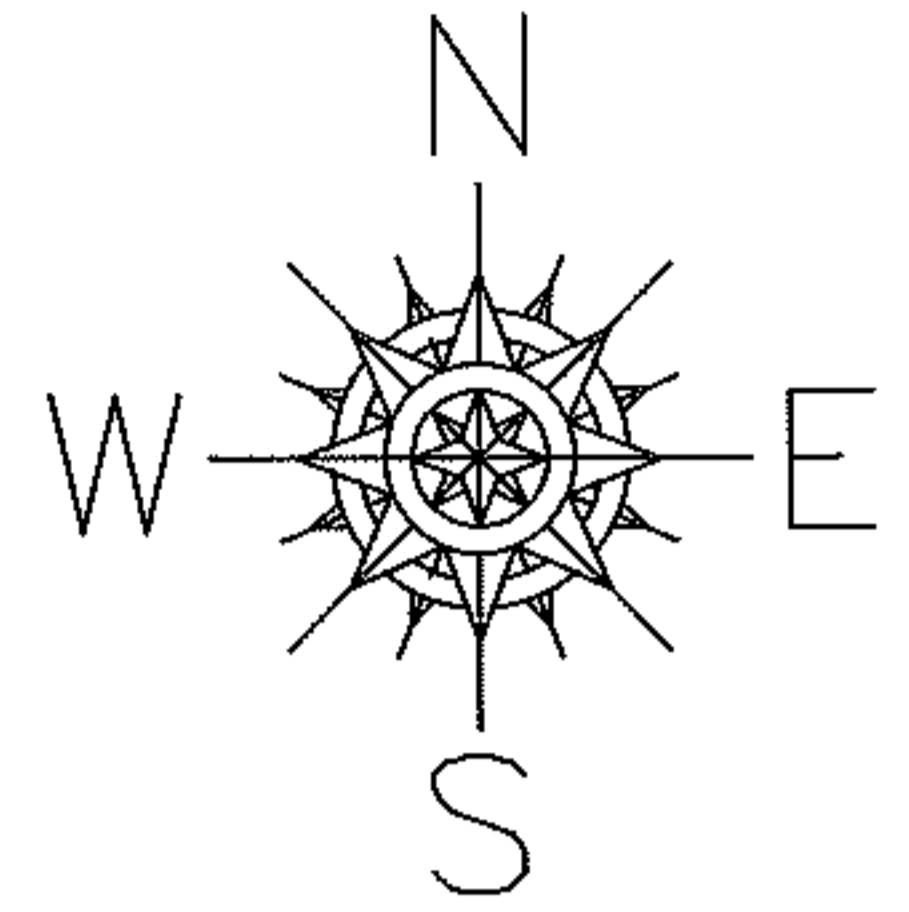


PARENT PARCEL: 04-00-004-102-142

CHILD PARCEL: \_\_\_\_\_

14-02921-A

STARTING POINT: INTERSECTION OF NORTH LINE OF S.R.611 AND WEST LINE OF CHESTER C. CONRAD LAND (DV 600/511)



**SPLITS/DEEDS PROCESSED**

LORAIN COUNTY TAX MAP DEPARTMENT  
226 MIDDLE AVE. ELYRIA, OHIO

SURVEYED BY: N/A

CLOSURE: .01:10,000

MAP PAGE(S): 4-00-004-E

APPROVED BY: RRM DATE: 4-15-14

SCALE: 1"= 100 PRIOR INST.: 20140500925