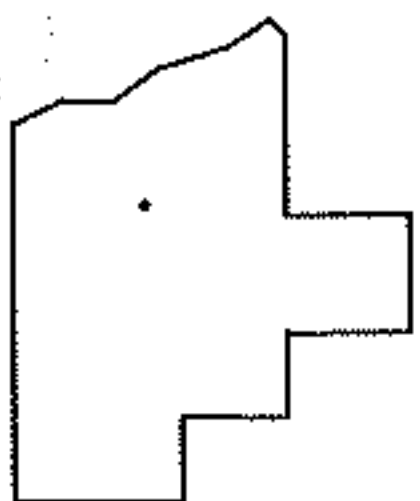
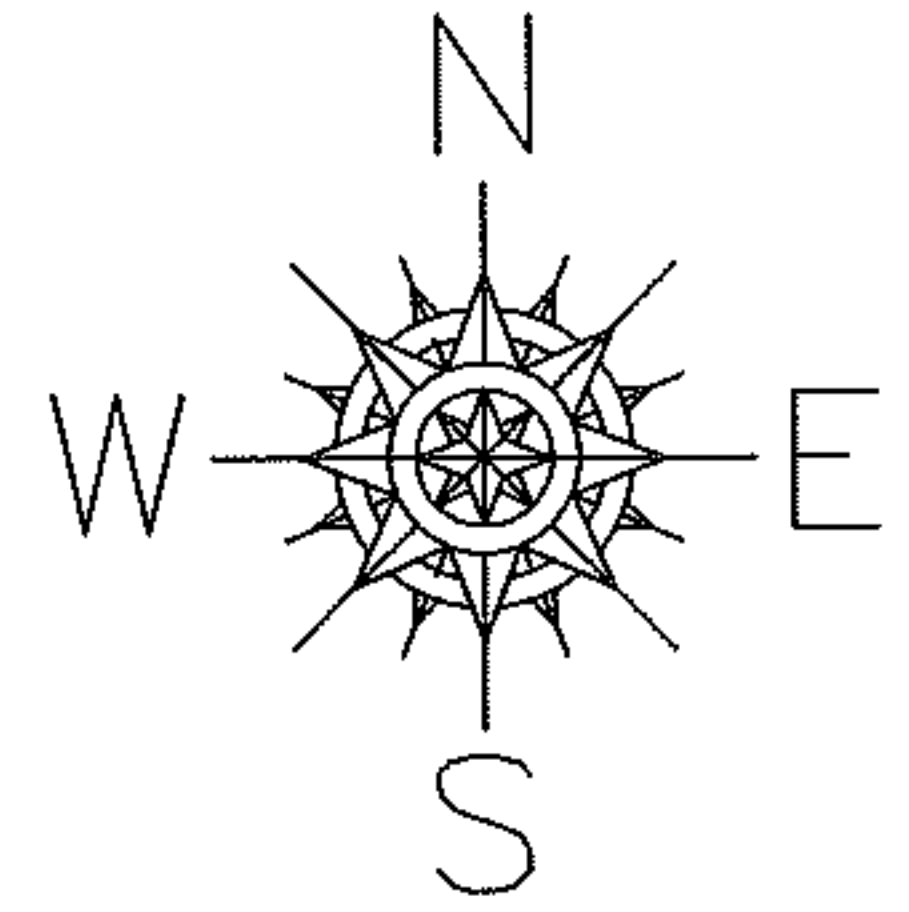
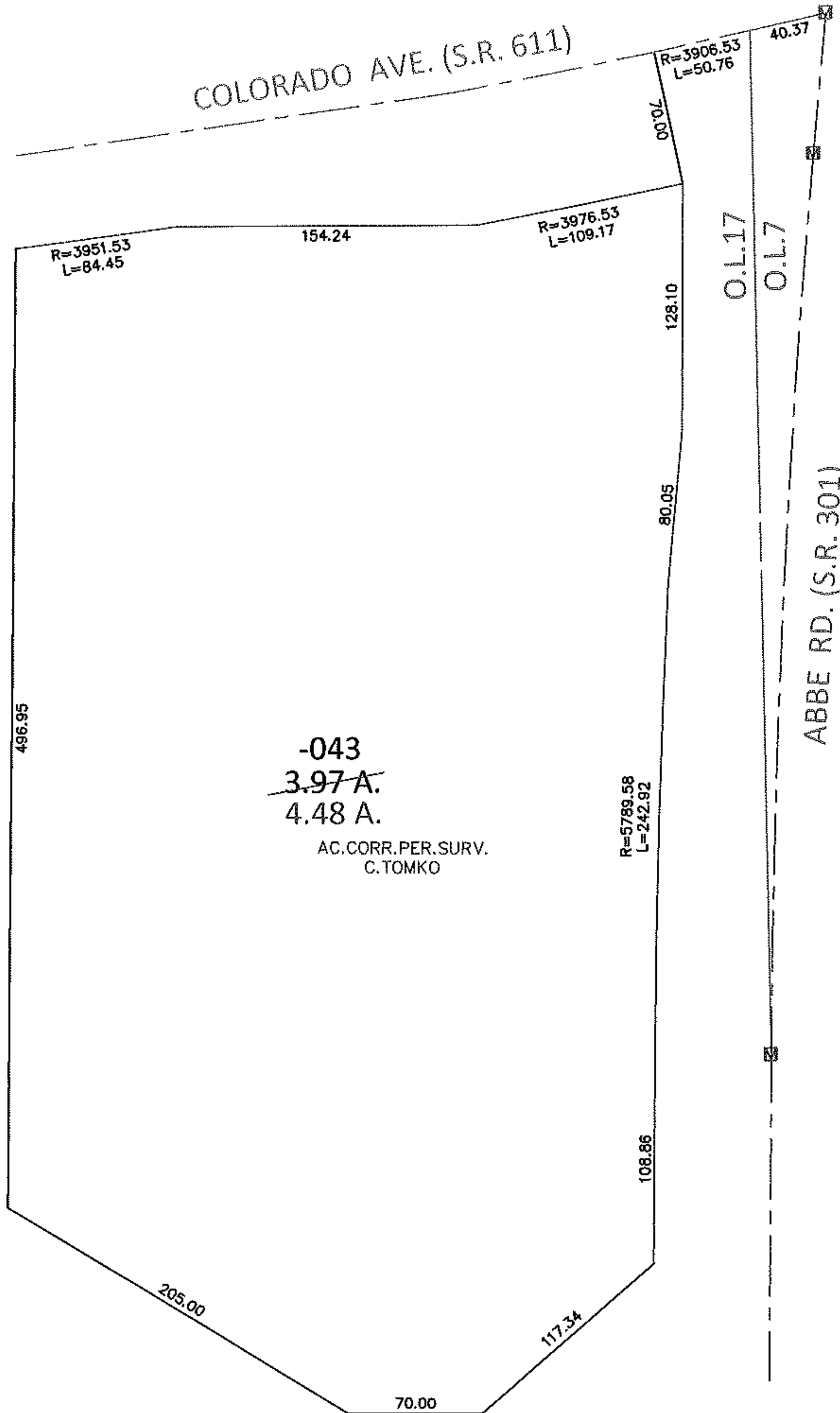


PARENT PARCEL: 03-00-017-102-043

CHILD PARCEL: _____

STARTING POINT: AT A MON BOX AT THE INTERSECTION OF C/L OF S.R.611 AND C/L OF S.R.301

14-02920-D



SPLITS/DEEDS PROCESSED

LORAIN COUNTY TAX MAP DEPARTMENT
226 MIDDLE AVE. ELYRIA, OHIO

SURVEYED BY: CHRISTOPHER J. TOMKO

CLOSURE: .01:10,000

MAP PAGE(S): 3-00-017-B

APPROVED BY: RRM DATE: 4-15-14

SCALE: 1"= 100 PRIOR INST.: OR 866/459