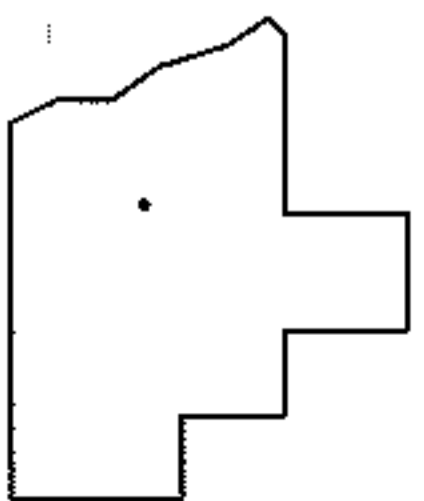
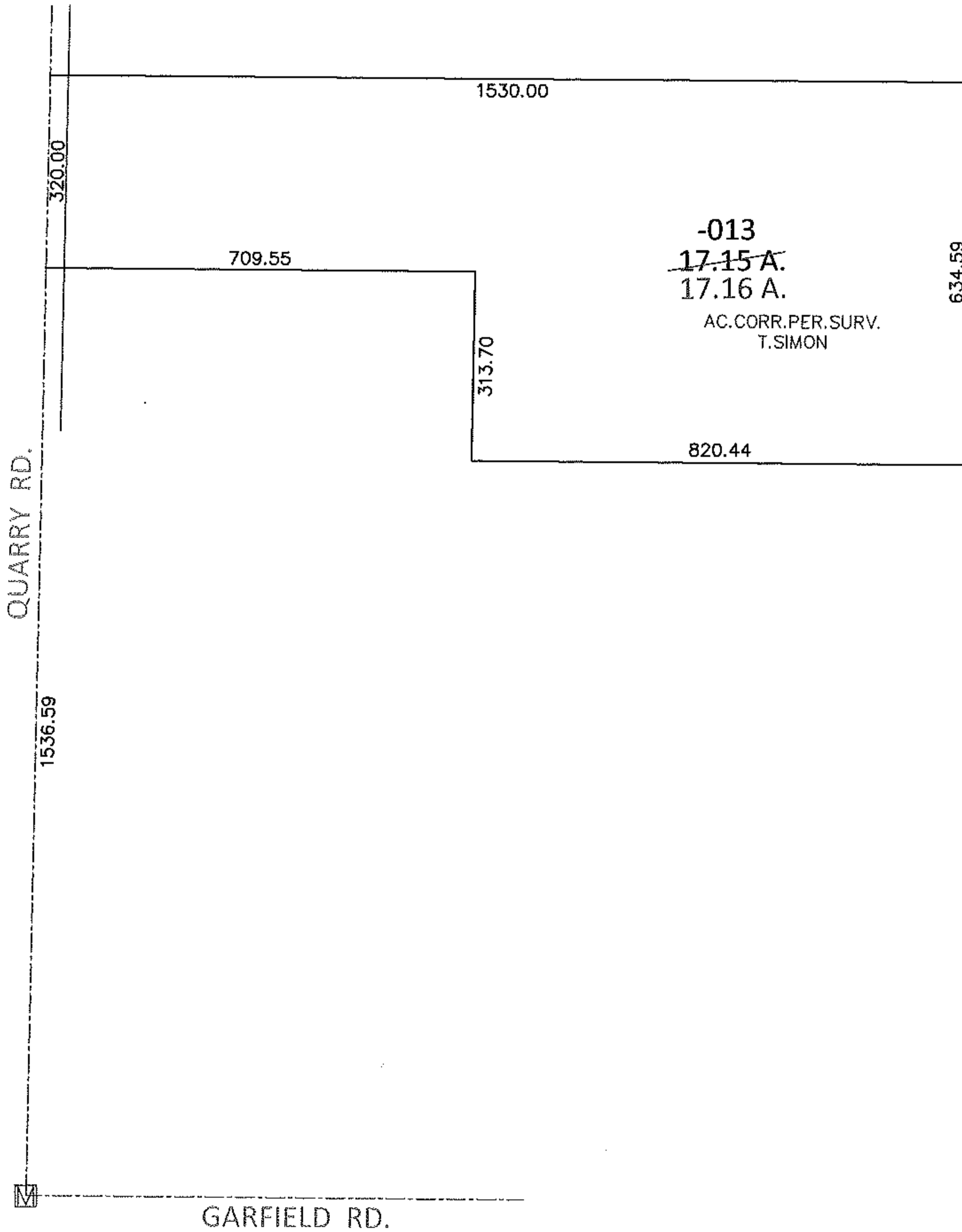
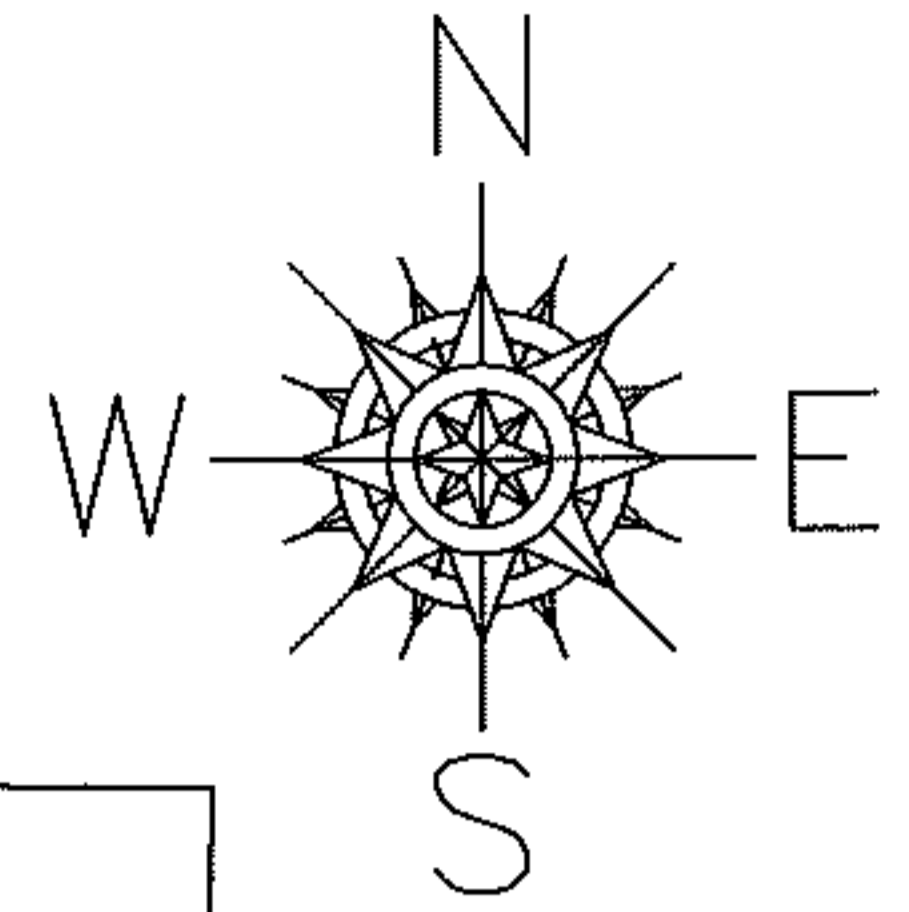


PARENT PARCEL: 09-00-042-000-013

CHILD PARCEL:

14-02919-A

STARTING POINT: AT A MON BOX AT THE INTERSECTION OF C/L OF QUARRY RD. AND C/L OF GARFIELD RD.



SPLITS/DEEDS PROCESSED

LORAIN COUNTY TAX MAP DEPARTMENT
226 MIDDLE AVE. ELYRIA, OHIO

SURVEYED BY: THOMAS A. SIMON

CLOSURE: .01:10,000

MAP PAGE(S): 9-00-042-A

APPROVED BY: RRM DATE: 4-15-14

SCALE: 1"= 300 PRIOR INST.: 20130485217