

PARENT PARCEL: 09-00-086-101-050

CHILD PARCEL:

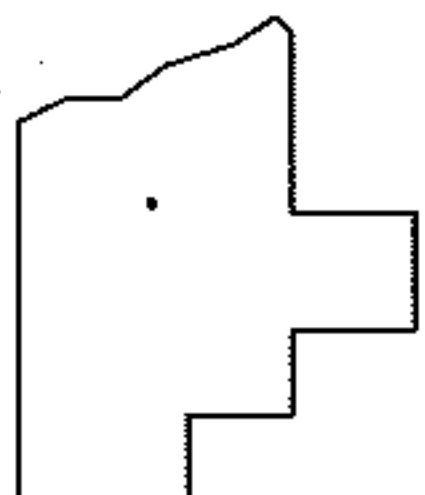
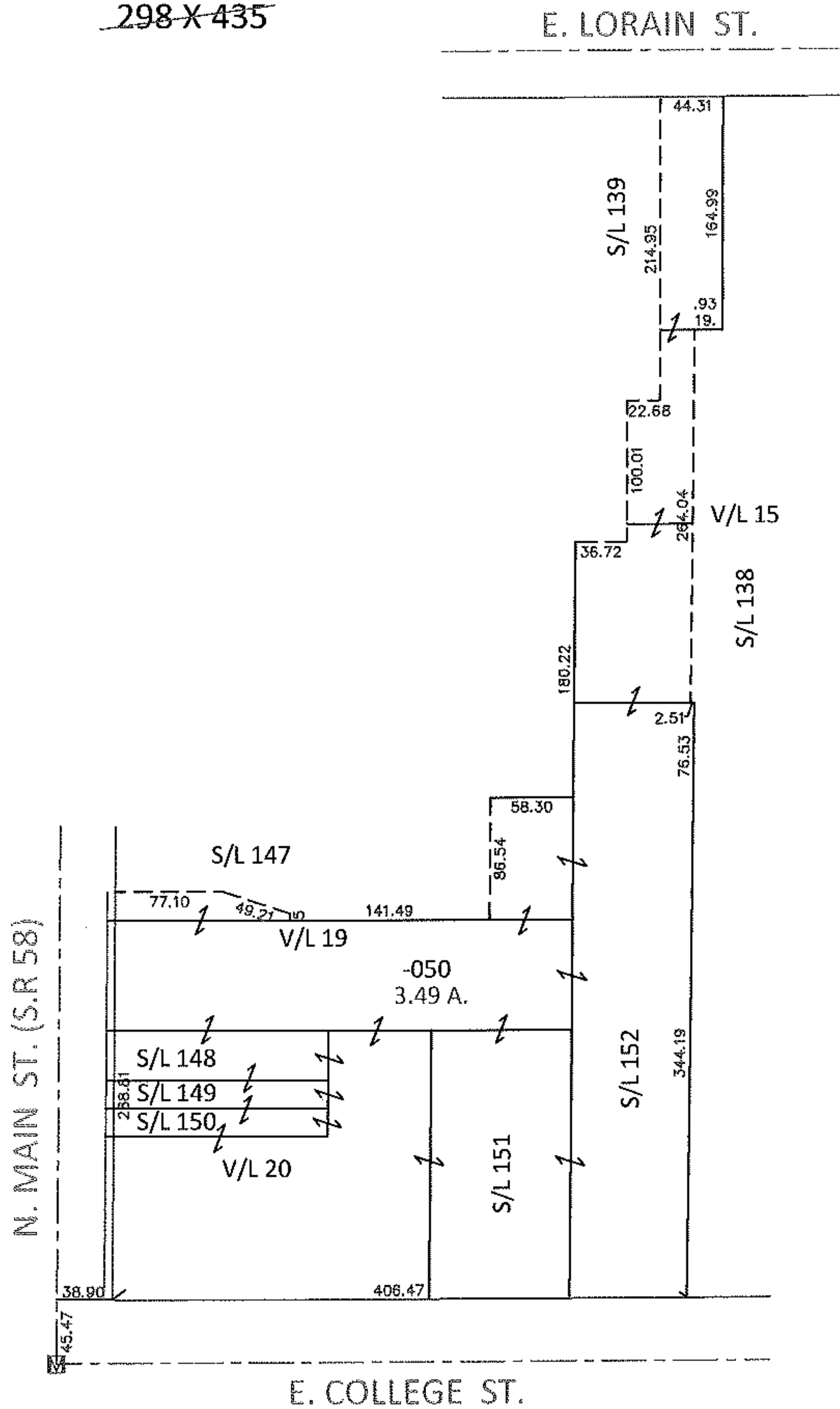
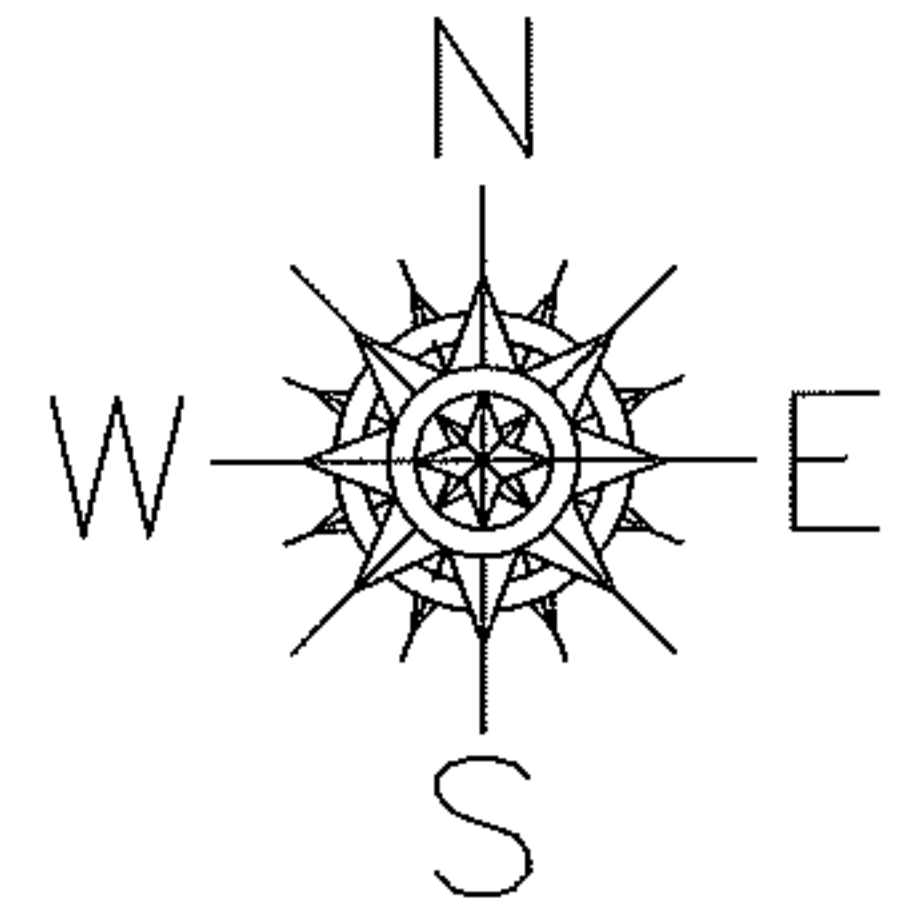
14-02917-X

STARTING POINT: AT A MON BOX AT THE INTERSECTION OF C/L OF S.R.58 AND C/L OF COLLEGE ST.

FRONTAGE AND DEPTH TO ACREAGE CORRECTION

09-00-086-101-050

3.49 A.
~~298 X 435~~



SPLITS/DEEDS PROCESSED

LORAIN COUNTY TAX MAP DEPARTMENT
226 MIDDLE AVE. ELYRIA, OHIO

SURVEYED BY: THOMAS J. NEFF JR.
 CLOSURE: .01:10.000
 MAP PAGE(S): 9-00-086-A
 APPROVED BY: RRM DATE: 4-11-14
 SCALE: 1"= 150' PRIOR INST.: 20140491173