

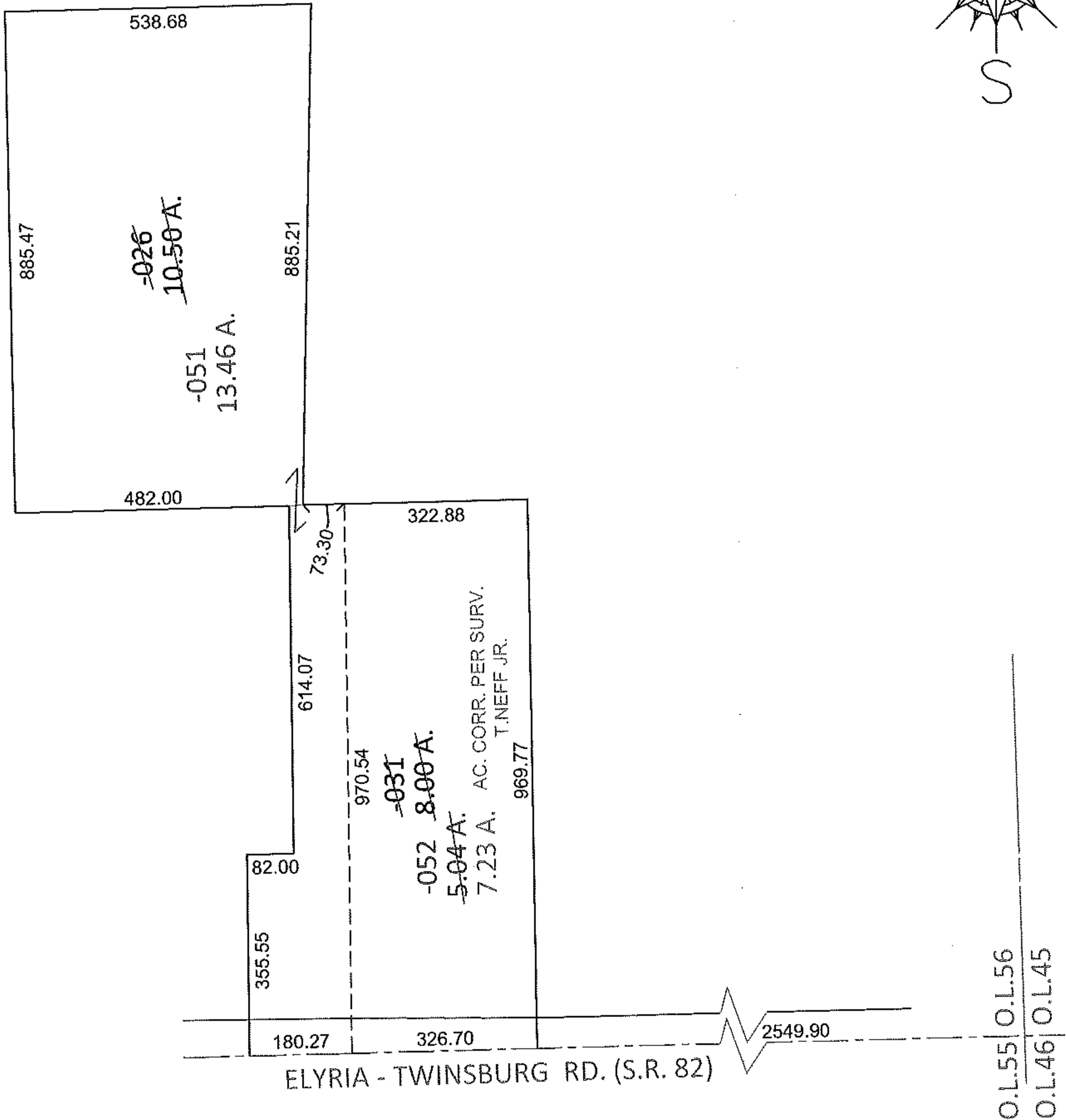
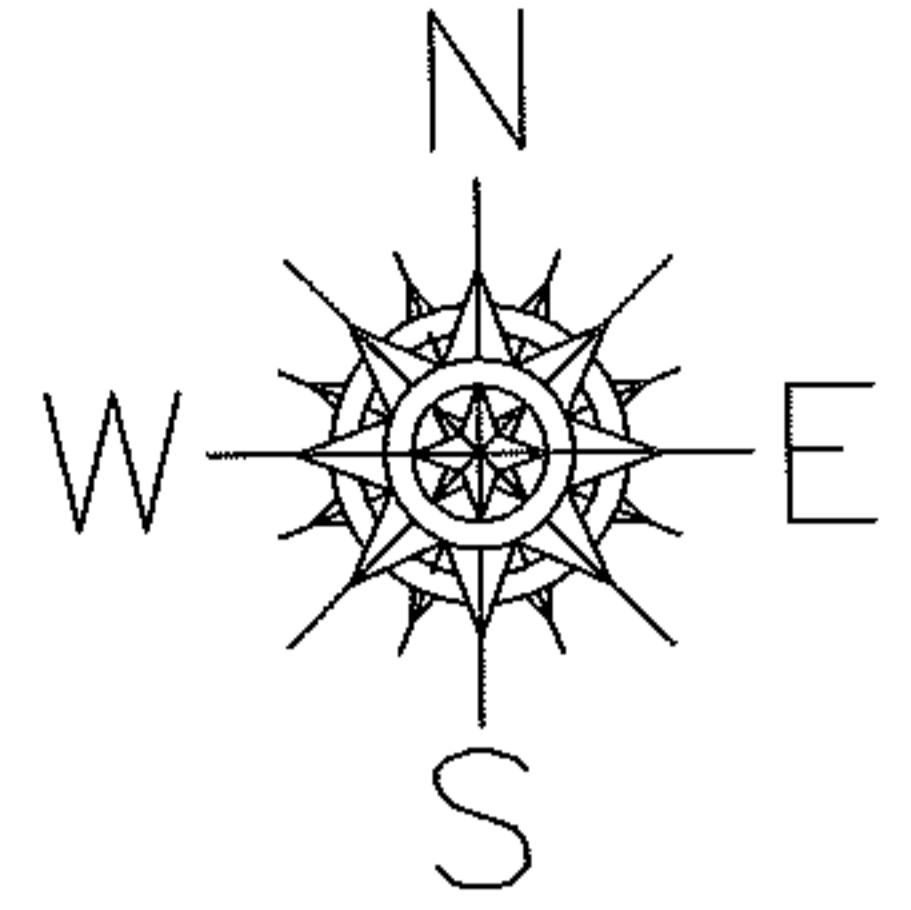
RASTER

PARENT PARCEL: 12-00-065-000-026, -031

CHILD PARCEL: 12-00-065-000-051, -052

STARTING POINT: THE C/L OF ELYRIA-TWINSBURG RD. AT THE SOUTHEAST CORNER OF O.L. 56

11-02915



SPLITS/DEEDS PROCESSED

LORAIN COUNTY TAX MAP DEPARTMENT
226 MIDDLE AVE. ELYRIA, OHIO

SURVEYED BY: THOMAS J. NEFF JR.

CLOSURE: .01:10,000

MAP PAGE(S): 12-00-065-B

APPROVED BY: RRM DATE: 4-29-11

SCALE: 1"= 300 PRIOR INST.: OR 524/933