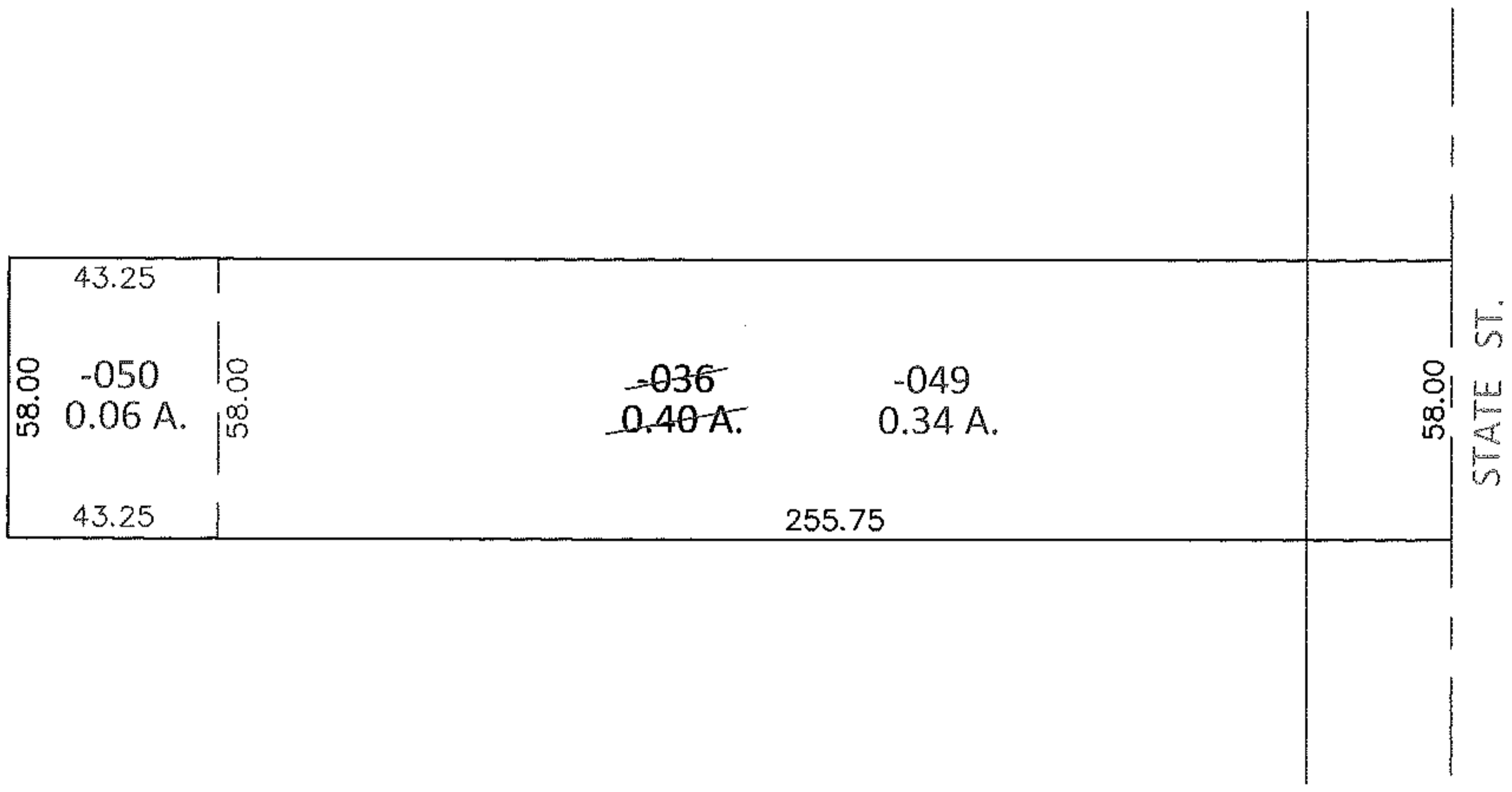
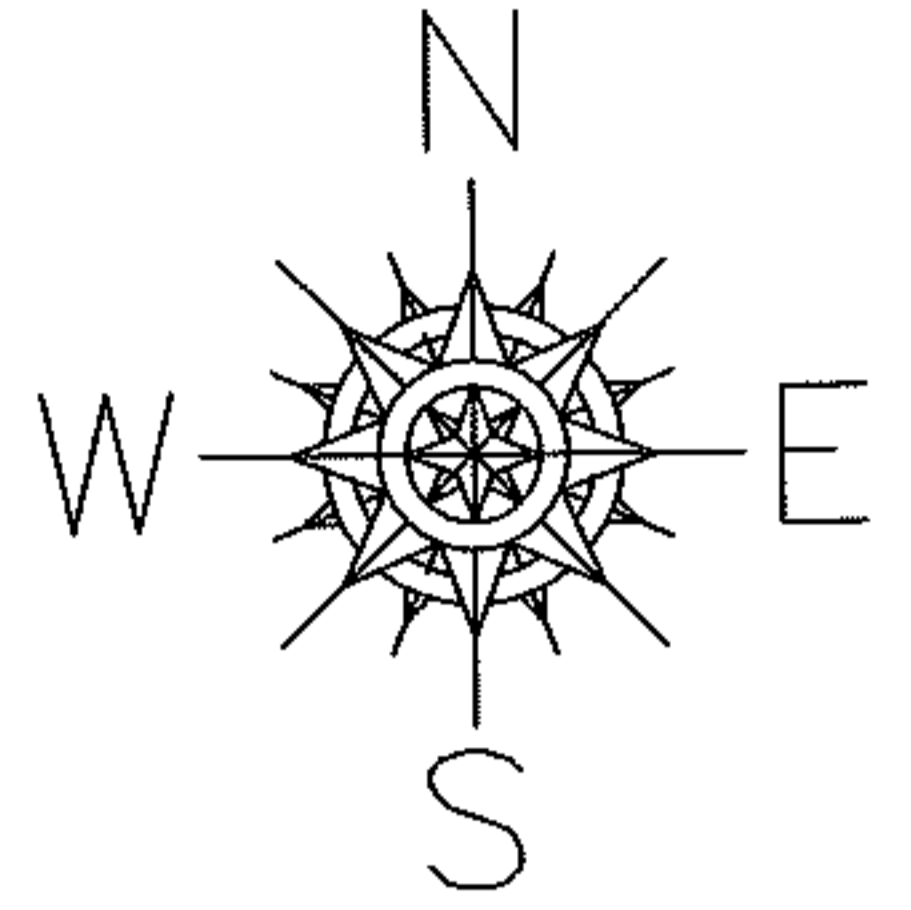
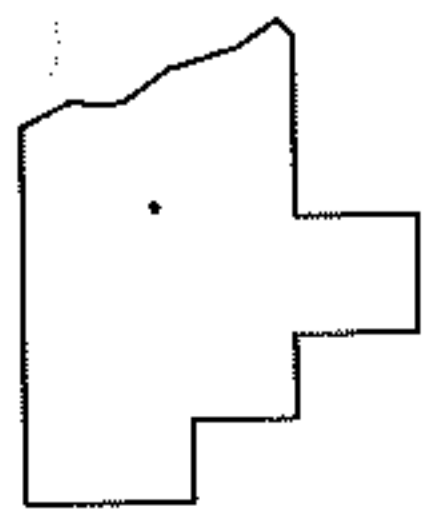


PARENT PARCEL: 13-11-016-109-036  
 CHILD PARCEL: 13-11-016-109-049, -050  
 STARTING POINT: NORTHEAST CORNER OF G.W. MONOSMITH (DV. 46 PG.475)

**14-02915-U**



UNCOMBINATION  
 PER PRIOR DEEDS



**SPLITS/DEEDS PROCESSED**  
 LORAIN COUNTY TAX MAP DEPARTMENT  
 226 MIDDLE AVE. ELYRIA, OHIO

SURVEYED BY: N/A  
 CLOSURE: N/A  
 MAP PAGE(S): 13-11-016  
 APPROVED BY: RRM DATE: 4-8-14  
 SCALE: 1" = 50' PRIOR INST.: DV 1299/568