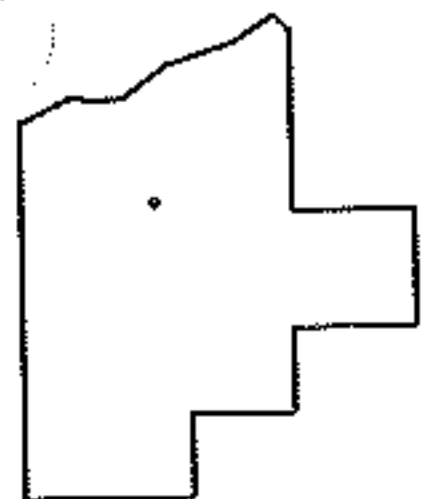
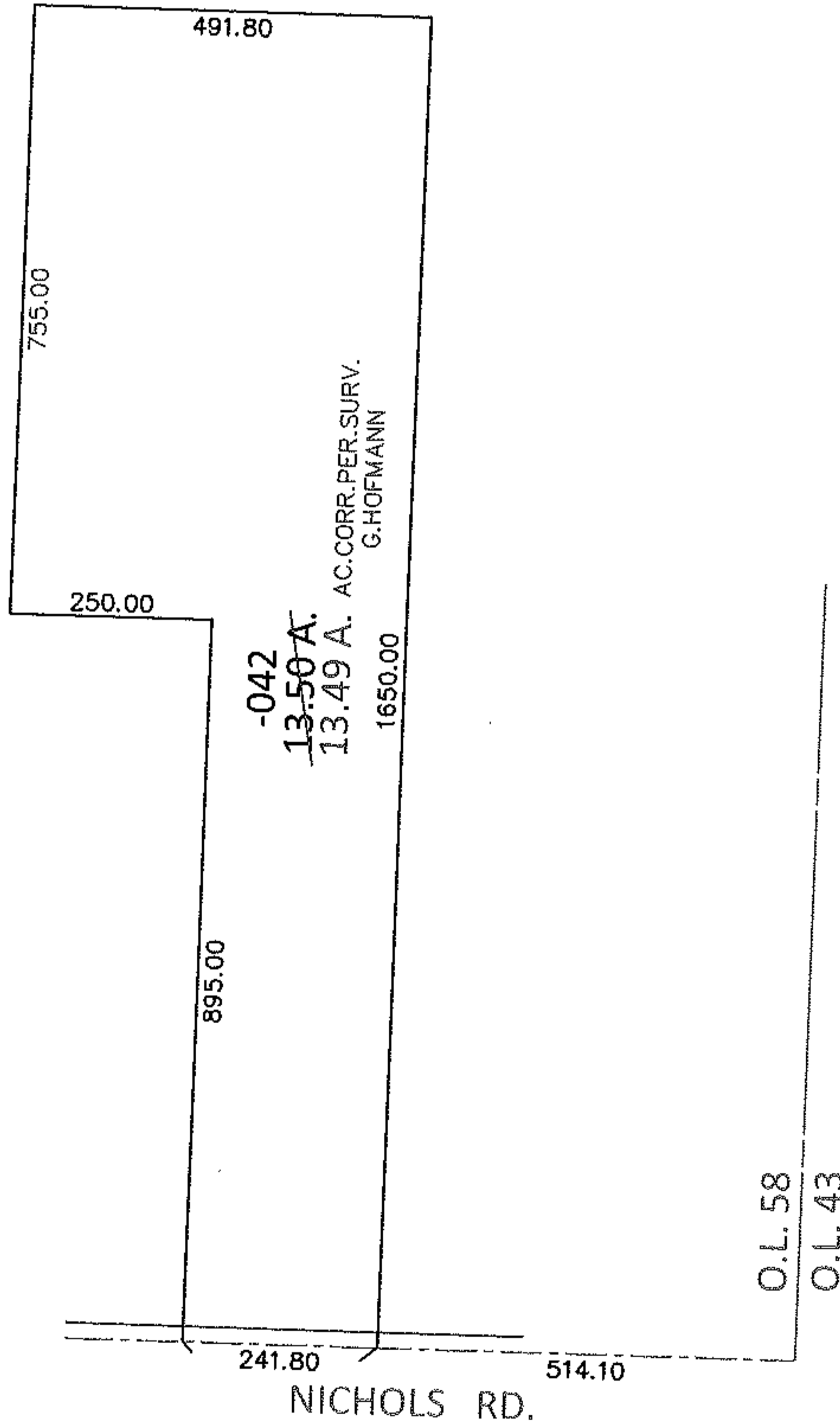
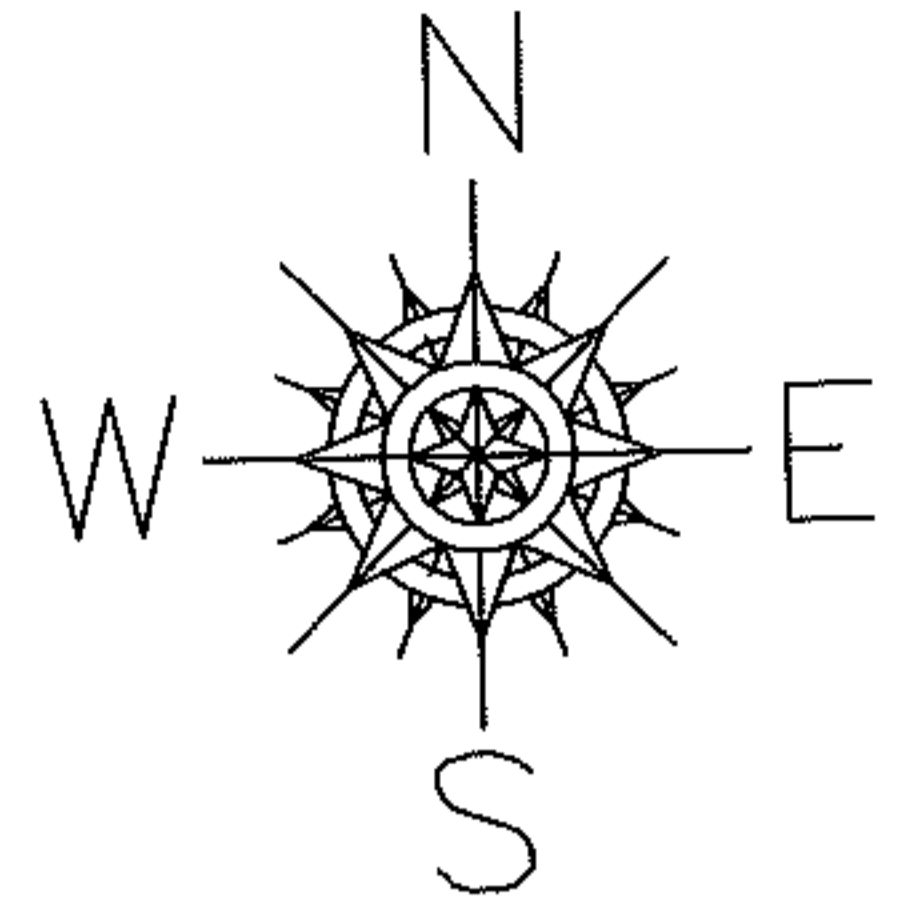


PARENT PARCEL: 12-00-058-000-042

CHILD PARCEL: \_\_\_\_\_

14-02902-A

STARTING POINT: SOUTHEAST CORNER OF O.L.58



SPLITS/DEEDS PROCESSED

LORAIN COUNTY TAX MAP DEPARTMENT  
226 MIDDLE AVE. ELYRIA, OHIO

SURVEYED BY: GEORGE A. HOFMANN

CLOSURE: .00:10,000

MAP PAGE(S): 12-B

APPROVED BY: RRM DATE: 3-14-14

SCALE: 1" = 300 PRIOR INST.: DV 1409/142