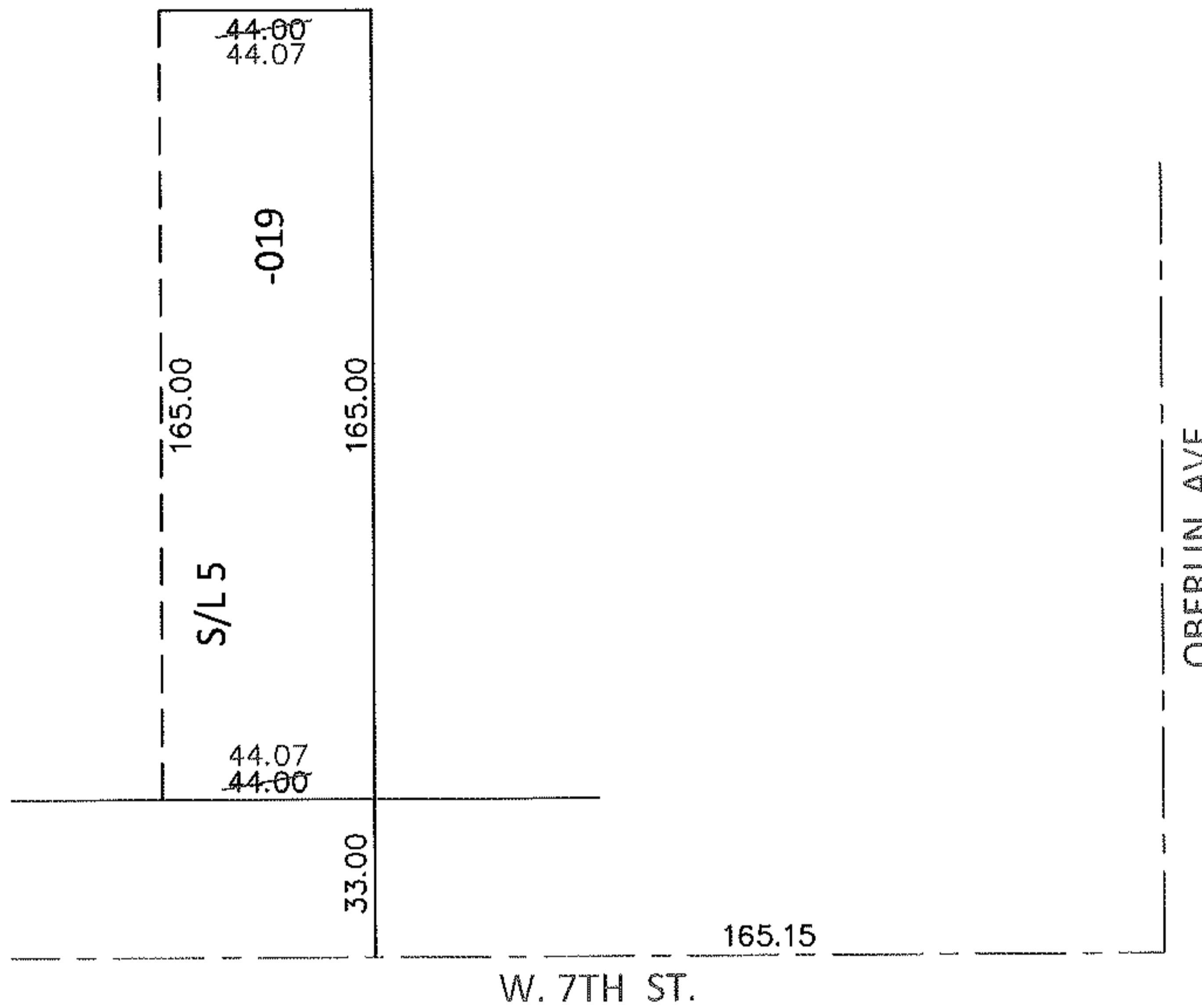
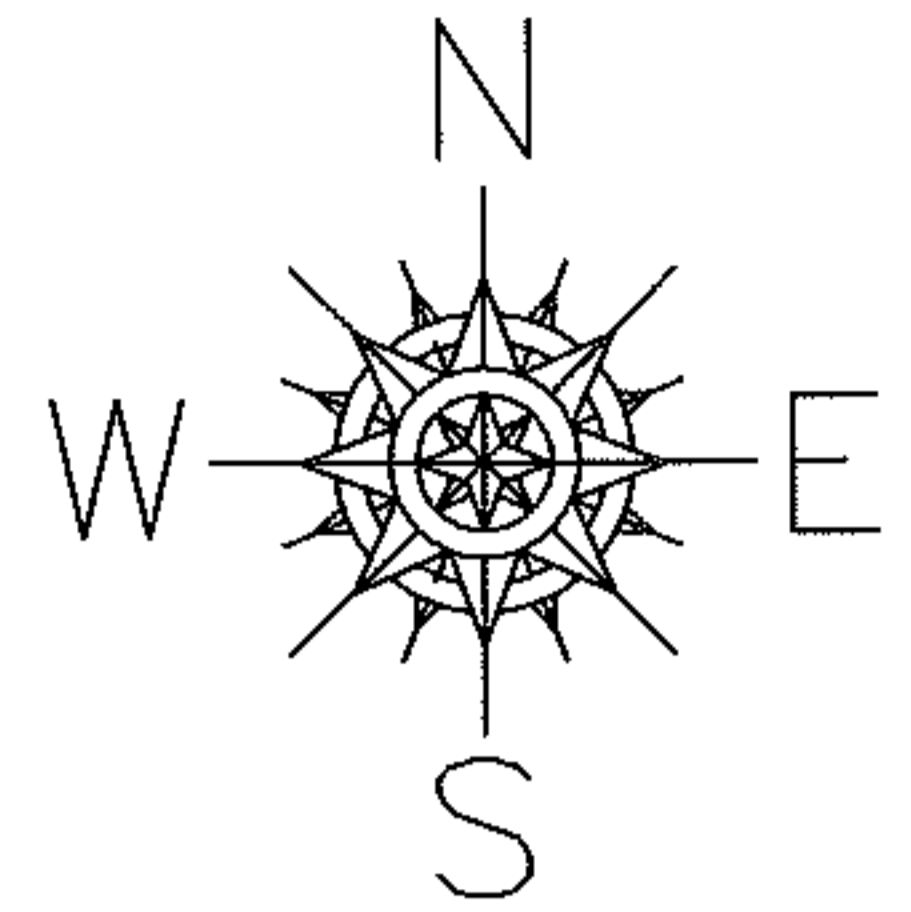


PARENT PARCEL: 02-02-026-110-019

CHILD PARCEL: _____

14-02895-C

STARTING POINT: INTERSECTION OF C/L OF OBERLIN AVE. AND C/L OF W. 7TH ST.



FRONTAGE CORRECTION

02-02-026-110-019

44.07

~~44~~ X 165

PER SURV. BY B.ANDERSON

SPLITS/DEEDS PROCESSED

LORAIN COUNTY TAX MAP DEPARTMENT
226 MIDDLE AVE. ELYRIA, OHIO

SURVEYED BY: BRENT D. ANDERSON

CLOSURE: .00:10,000

MAP PAGE(S): 2-02-026-B

APPROVED BY: RRM DATE: 2-25-14

SCALE: 1"= 50' PRIOR INST.: 20130446131

