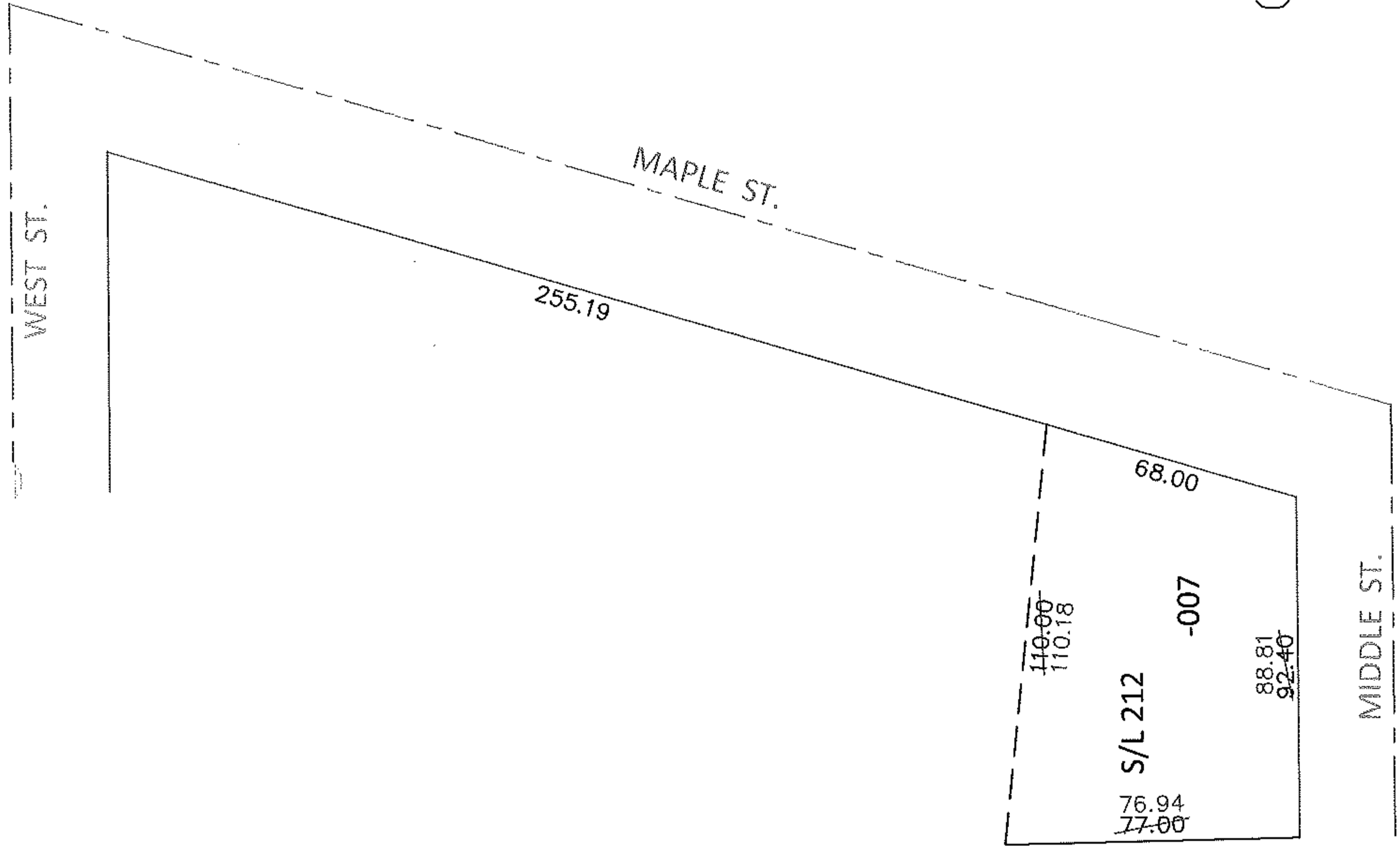
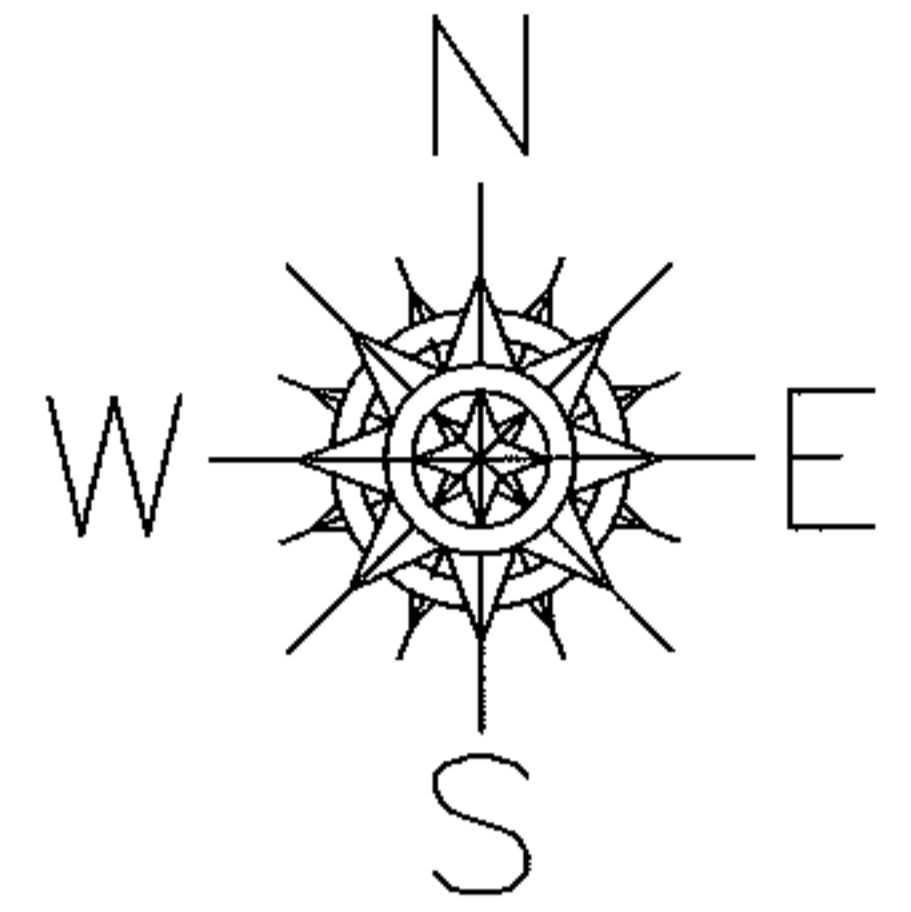


PARENT PARCEL: 05-00-024-113-007

14-02892-C

CHILD PARCEL:

STARTING POINT: INTERSECTION OF SOUTH LINE OF MAPLE ST. AND EAST LINE OF WEST ST.



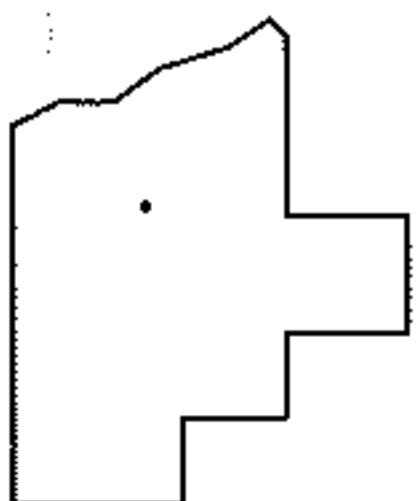
DEPTH CORRECTION

05-00-024-113-007

110.18

68 X 92

CORR. PER. SURV. R. DORNER



SPLITS/DEEDS PROCESSED

LORAIN COUNTY TAX MAP DEPARTMENT  
226 MIDDLE AVE. ELYRIA, OHIO

SURVEYED BY: ROBERT A. DORNER

CLOSURE: .01:10,000

MAP PAGE(S): 5-00-024-B

APPROVED BY: RRM DATE: 2-21-14

SCALE: 1" = 50' PRIOR INST.: 20130490187