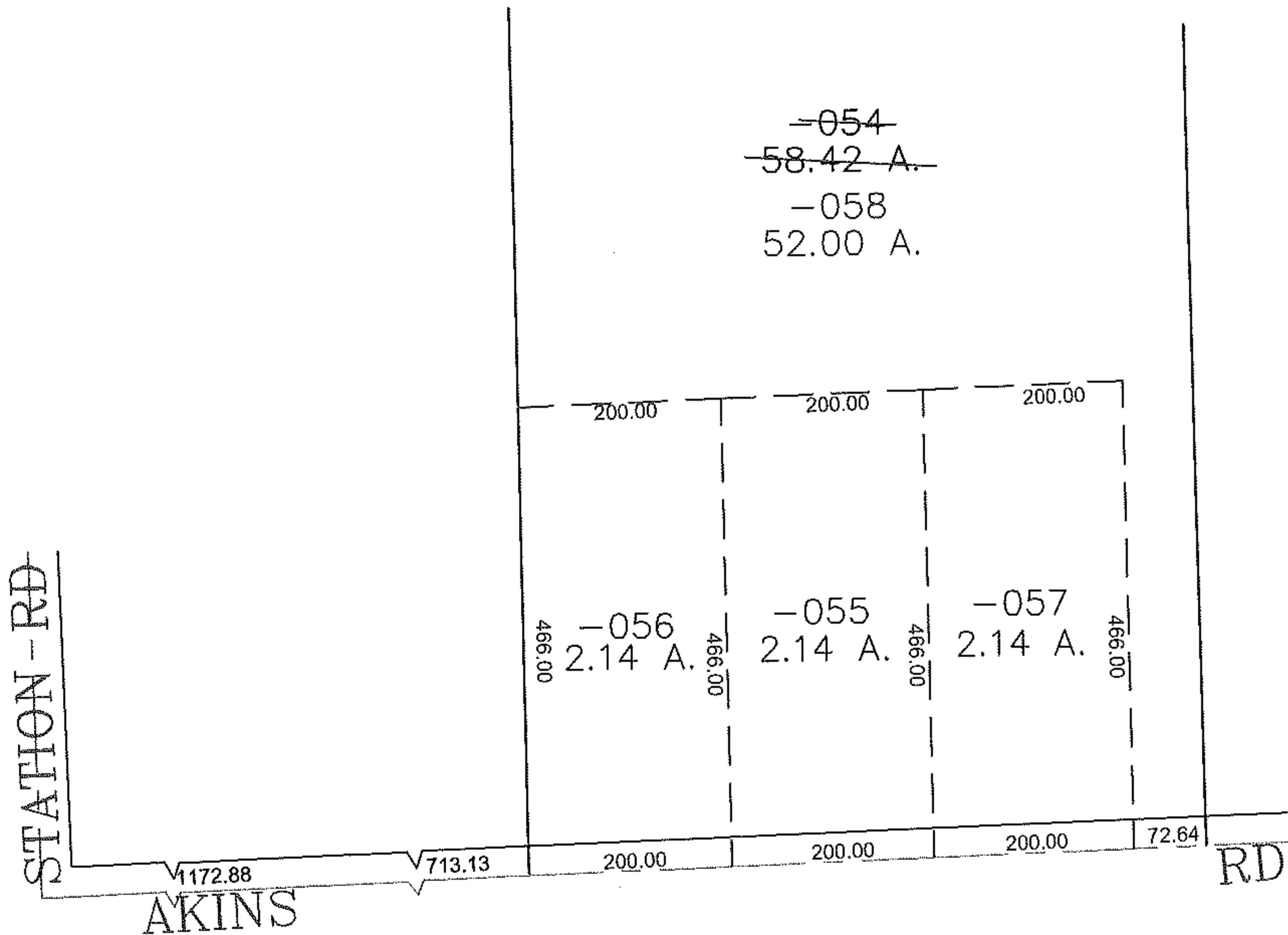
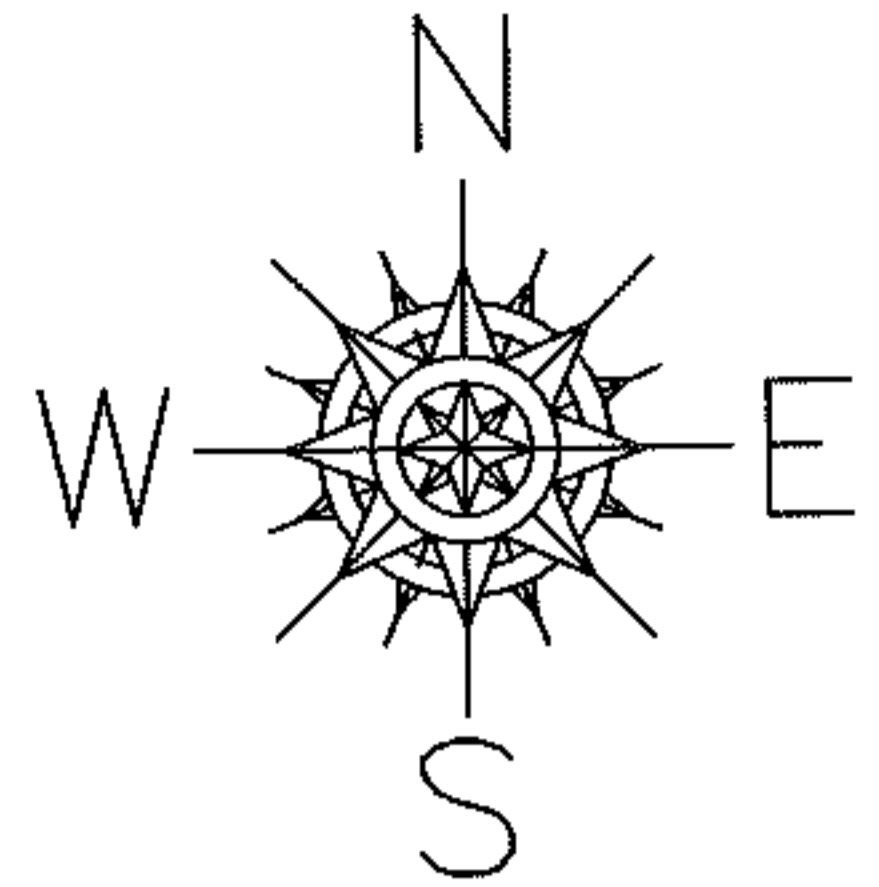


PARENT PARCEL: 12-00-073-000-054

CHILD PARCEL: 12-00-073-000-055 THRU -058

STARTING POINT: CENTERLINE OF STATION RD & AKINS RD

10-02890



SPLITS/DEEDS PROCESSED

LORAIN COUNTY TAX MAP DEPARTMENT
226 MIDDLE AVE. ELYRIA, OHIO

SURVEYED BY: THOMAS NEFF JR

CLOSURE: 0.00 : 10.000

MAP PAGE(S): 12-E

APPROVED BY: JAH DATE: 1-3-2011

SCALE: 1" = 200' PRIOR INSTRUMENT: DV 1374/93