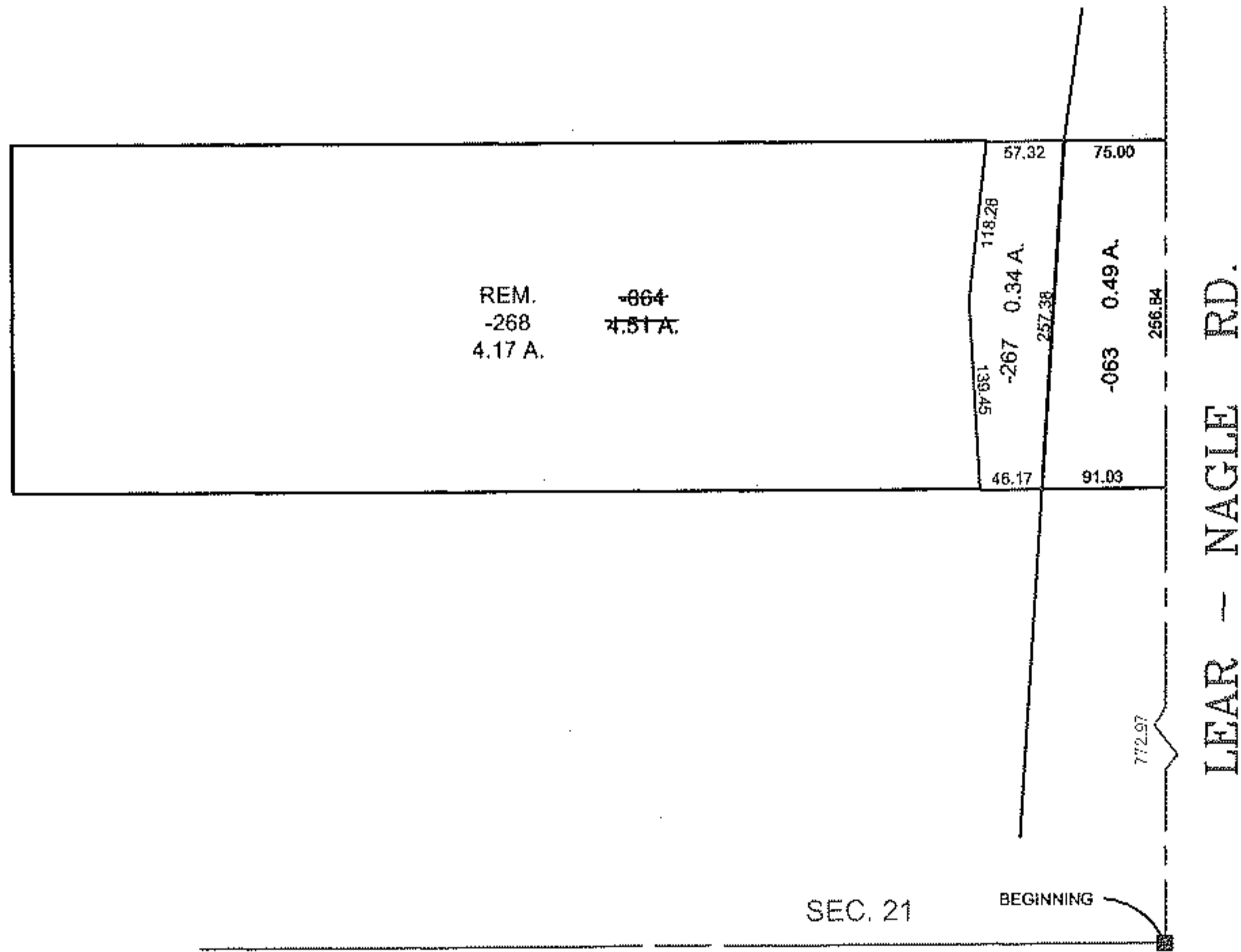
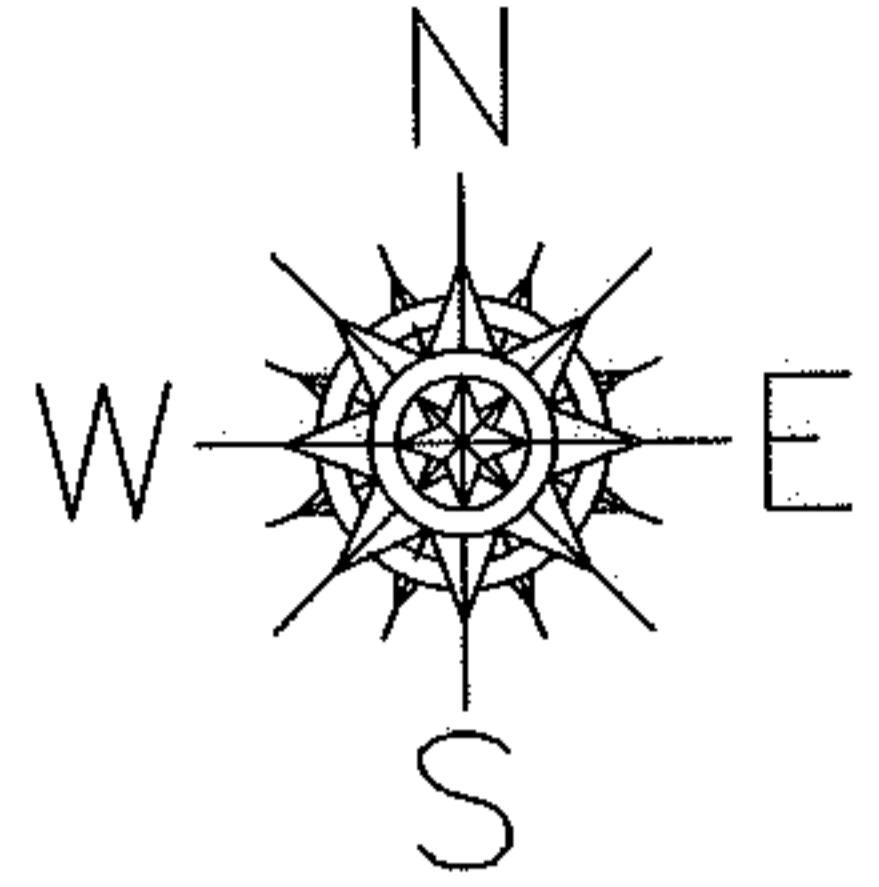


PARENT PARCEL: 04-00-021-000-064

CHILD PARCEL: 04-00-021-000-267 & -268

STARTING POINT: MON. BOX, S.E. CORNER OF SECTION 21

10-02888



SPLITS/DEEDS PROCESSED

LORAIN COUNTY TAX MAP DEPARTMENT
226 MIDDLE AVE. ELYRIA, OHIO

SURVEYED BY: WILLIAM J. SALA

CLOSURE: 0.01 : 10.000

MAP PAGE(S): 4-00-021-H

APPROVED BY: TJS DATE: 12/29/10

SCALE: 1" = 200 PRIOR INSTRUMENT: DV 838/160