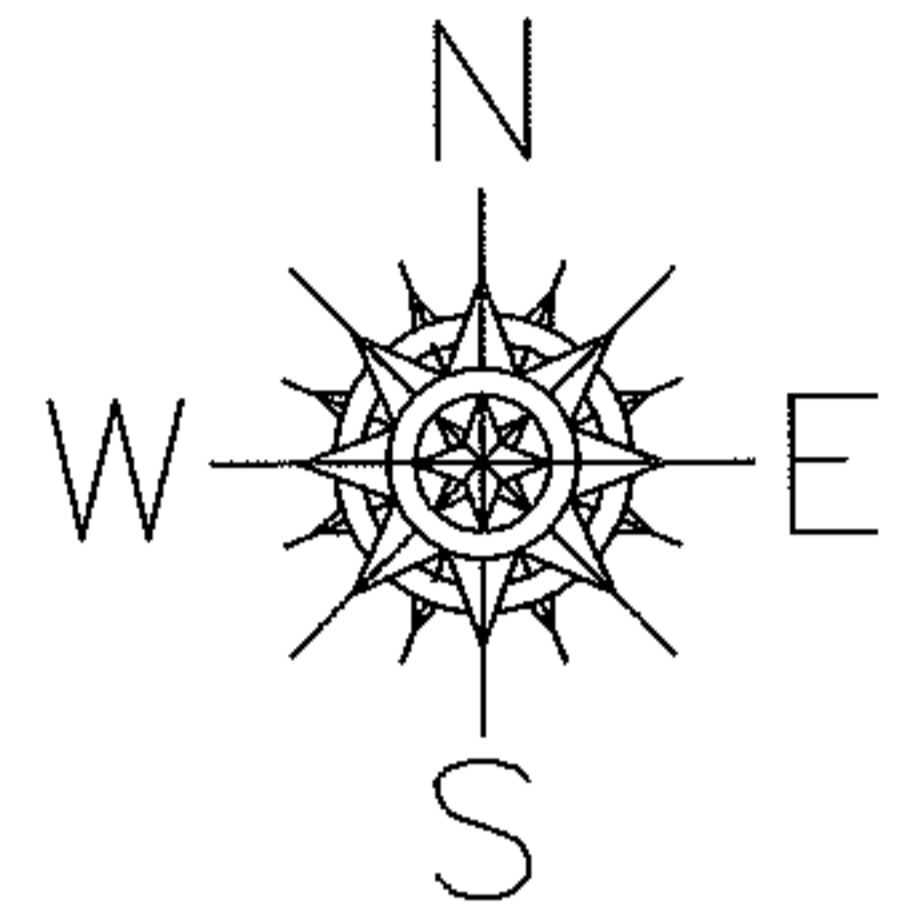
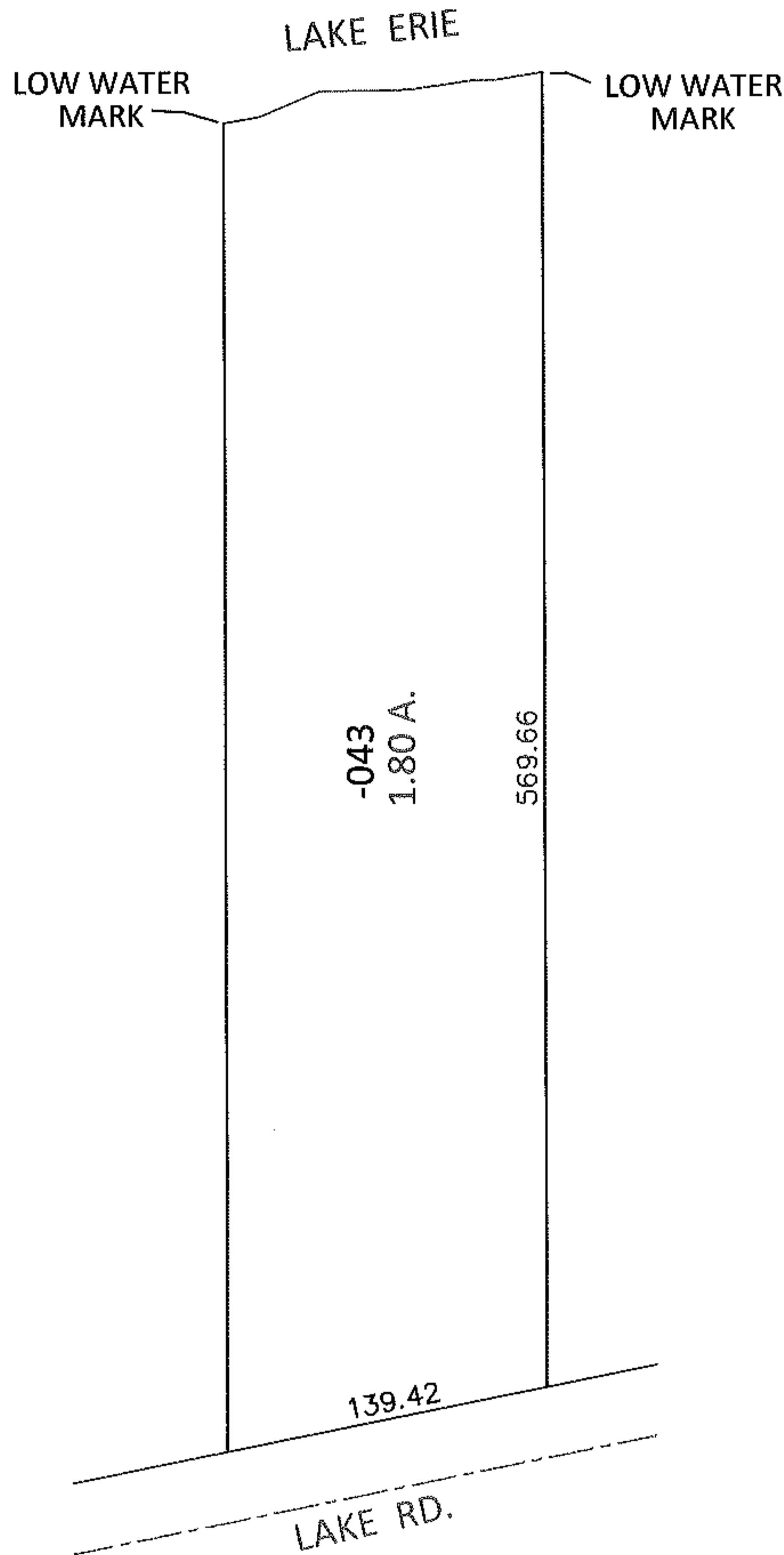


PARENT PARCEL: 04-00-007-104-043

CHILD PARCEL: \_\_\_\_\_

14-02886-X

STARTING POINT: NORTHWEST CORNER OF LAND CONVEYED TO JOHN H. & ALLEN A. SMITH (DV 151/333)



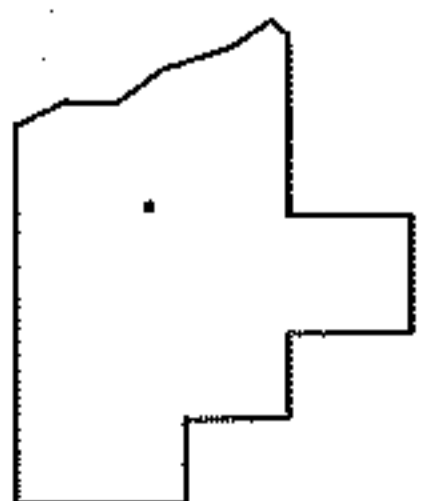
**FRONTAGE AND DEPTH TO ACERAGE CORRECTION**

04-00-007-104-043

1.80 A.

~~139.43 X 542~~

PER PRIOR DEEDS



**SPLITS/DEEDS PROCESSED**

LORAIN COUNTY TAX MAP DEPARTMENT  
226 MIDDLE AVE. ELYRIA, OHIO

SURVEYED BY: N/A

CLOSURE: N/A

MAP PAGE(S): 4-00-007-B

APPROVED BY: RRM DATE: 2-6-14

SCALE: 1" = 100 PRIOR INST.: DV 1267/238