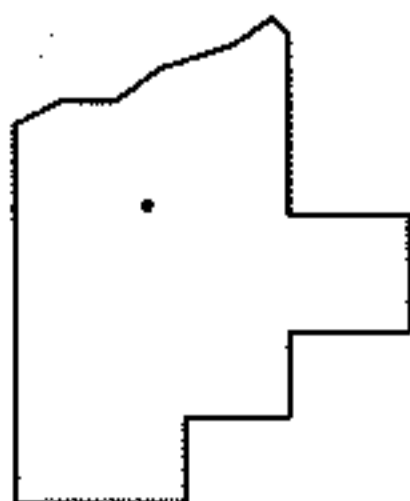
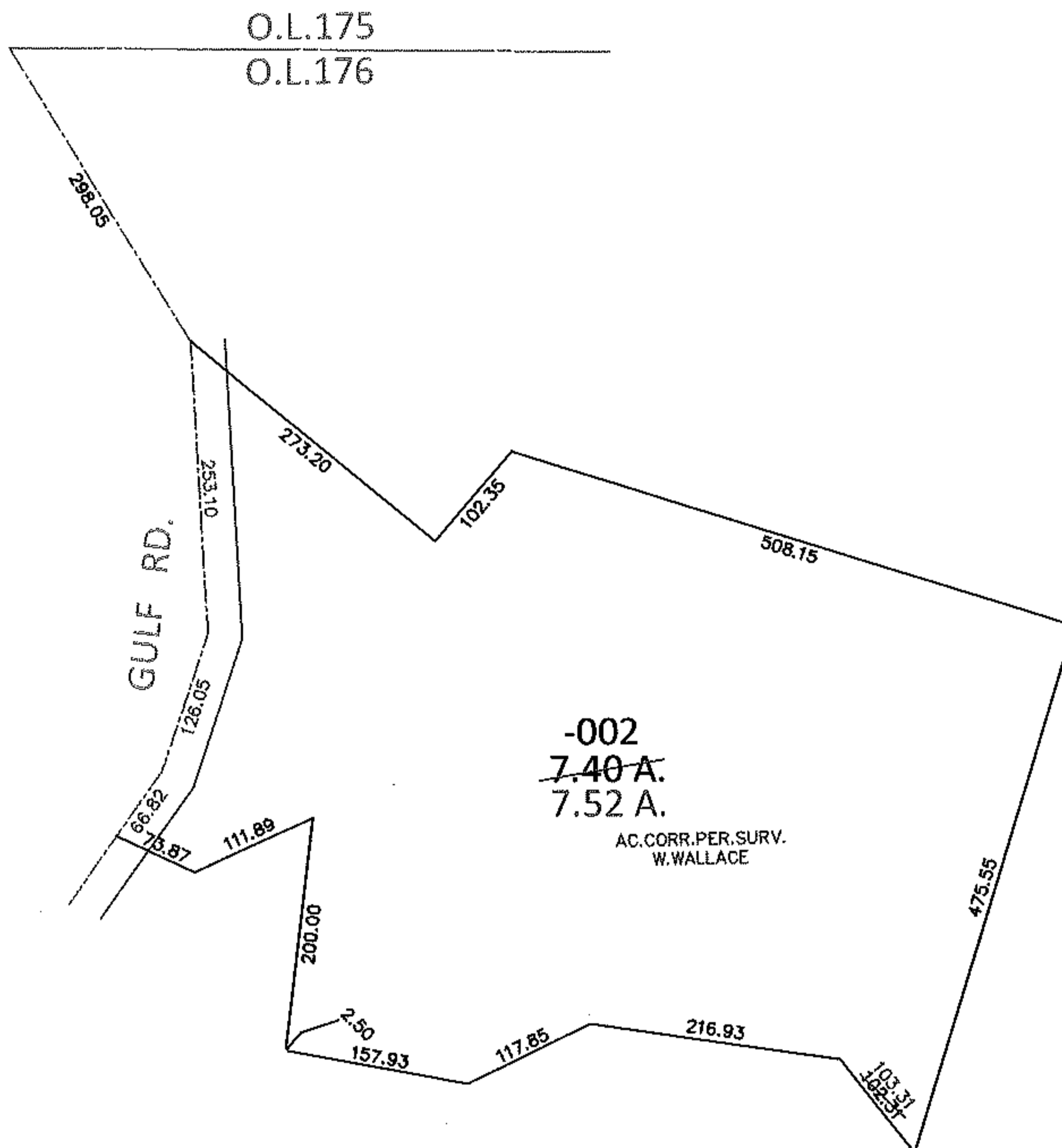
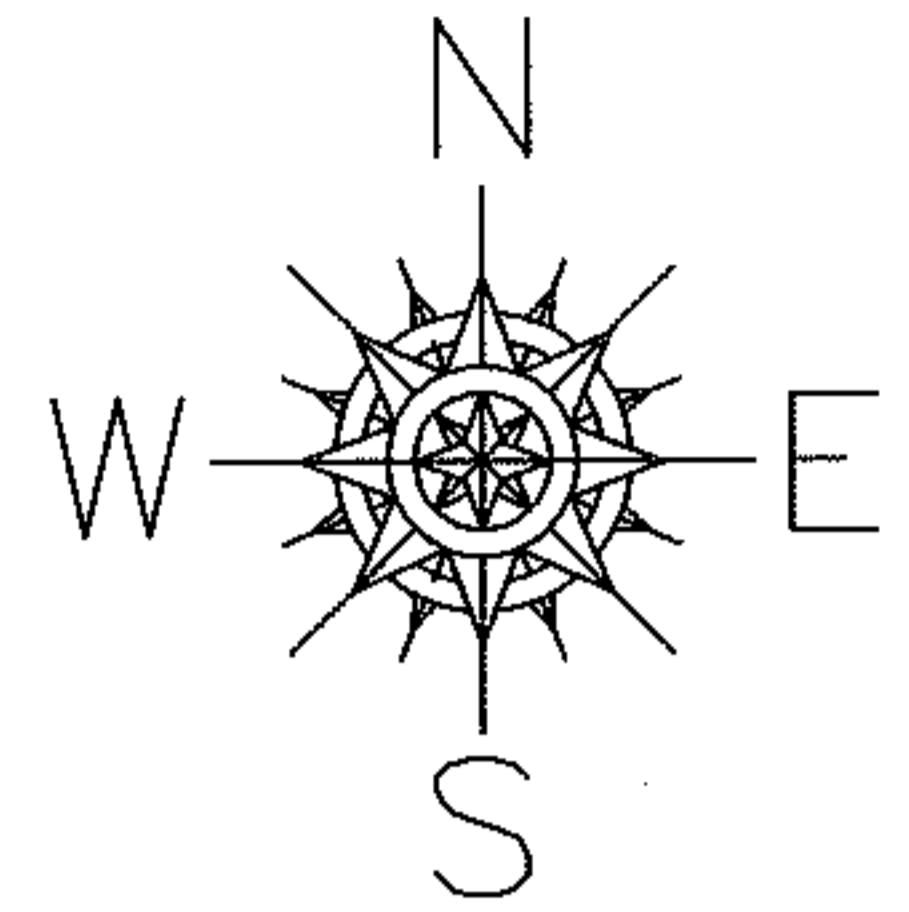


PARENT PARCEL: 06-25-176-104-002

CHILD PARCEL:

14-02883-X

STARTING POINT: INTERSECTION OF C/L OF GULF RD. AND NORTH LINE OF O.L.176



SPLITS/DEEDS PROCESSED

LORAIN COUNTY TAX MAP DEPARTMENT
226 MIDDLE AVE. ELYRIA, OHIO

SURVEYED BY: WILLIAM R. WALLACE

CLOSURE: .01:10,000

MAP PAGE(S): 6-51

APPROVED BY: RRM DATE: 1-30-14

SCALE: 1"= 200 PRIOR INST.: 20080245867