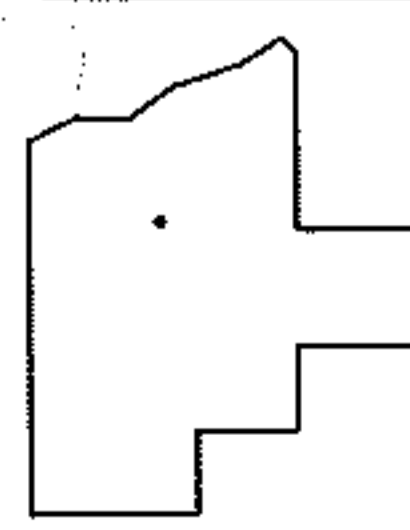
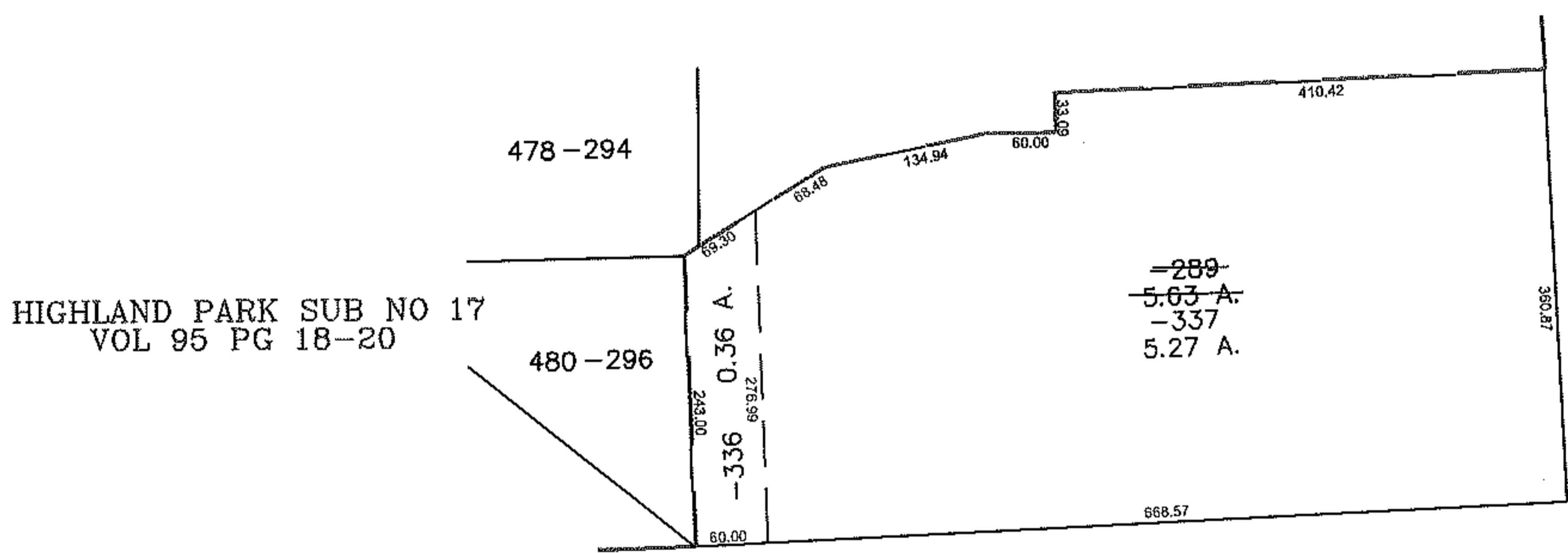
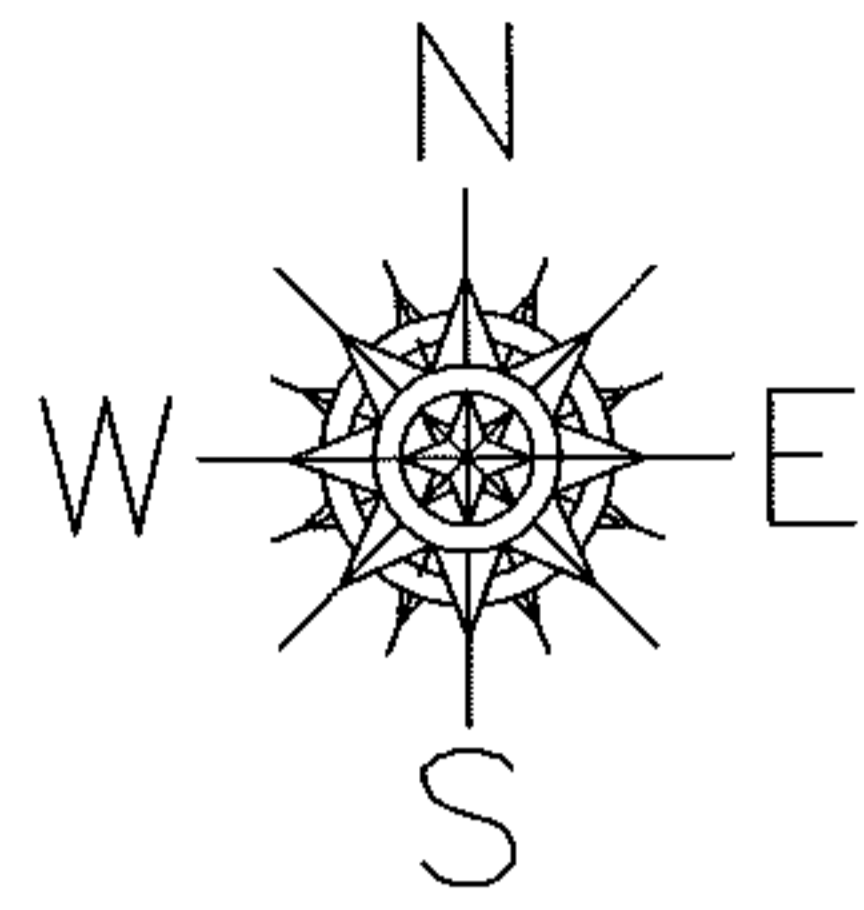


PARENT PARCEL: 04-00-012-103-289

CHILD PARCEL: 04-00-012-103-336, -337

STARTING POINT: SOUTHEAST CORNER OF SUBLot 478 IN HIGHLAND PARK SUB NO 17

10-02879



**SPLITS/DEEDS PROCESSED**  
 LORAIN COUNTY TAX MAP DEPARTMENT  
 226 MIDDLE AVE. ELYRIA, OHIO

SURVEYED BY: DALE HAYWOOD  
 CLOSURE: 0.00 : 10,000  
 MAP PAGE(S): 04-00-012-H  
 APPROVED BY: JAH DATE: 11-29-2010  
 SCALE: 1" = 200 PRIOR INSTRUMENT: 20090298404