

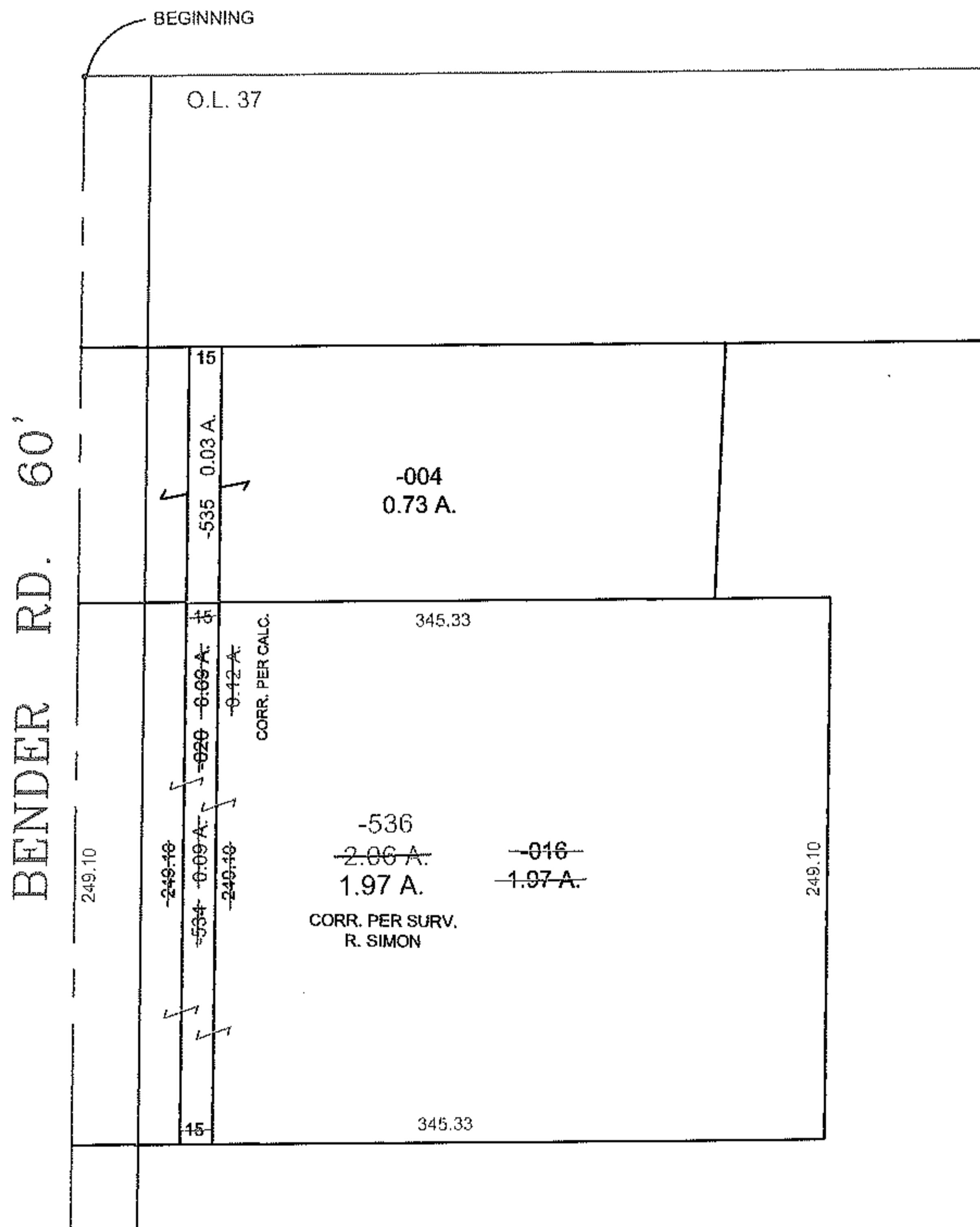
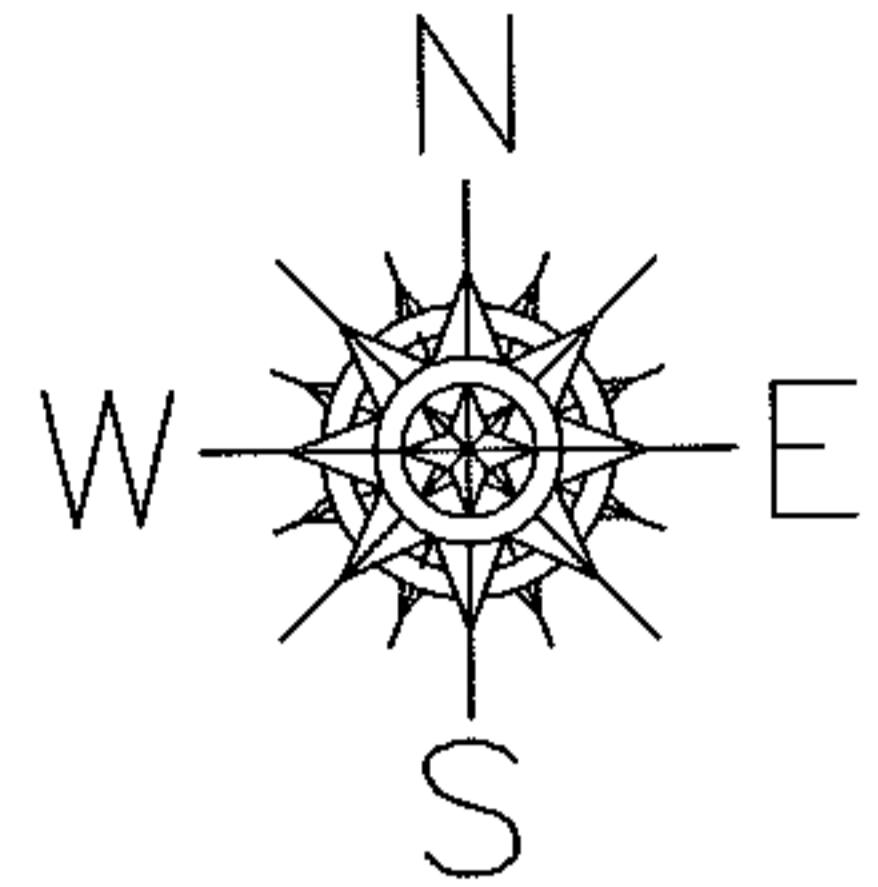
PARENT PARCEL: 07-00-037-000-016, & -020

CHILD PARCEL: 07-00-037-000-534 THRU -536

STARTING POINT: I.P., N.W. CORNER OF O.L. 37

10-02875

SPLIT & COMBINATION



SPLITS/DEEDS PROCESSED

LORAIN COUNTY TAX MAP DEPARTMENT
226 MIDDLE AVE. ELYRIA, OHIO

SURVEYED BY: R. SIMON & JEFFERY V. GREEN
CLOSURE: 0.00 : 10.000
MAP PAGE(S): 7-00-037-A
APPROVED BY: TJS DATE: 11/15/10
SCALE: 1" = 100' PRIOR INSTRUMENT: OR 407/482