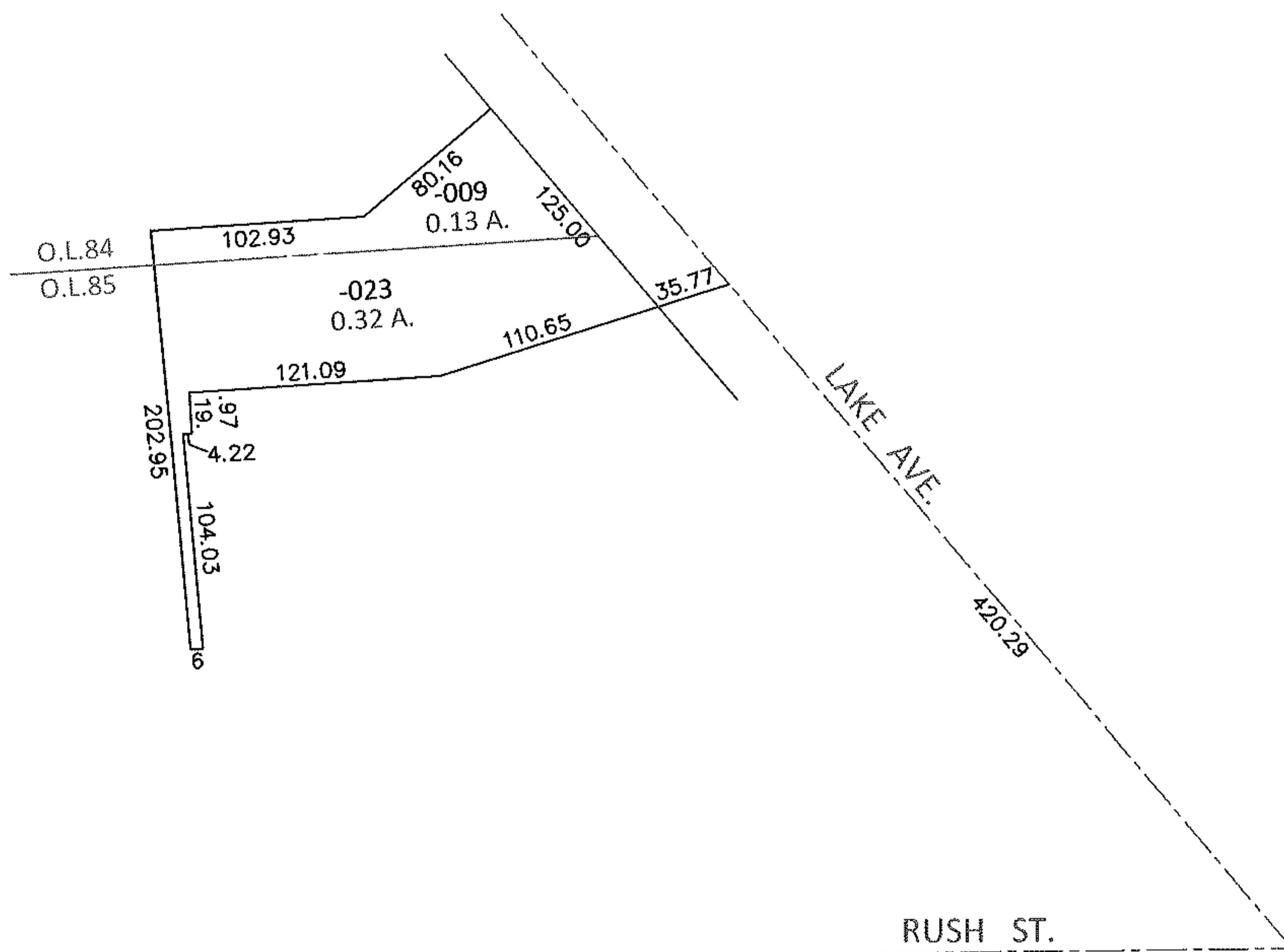
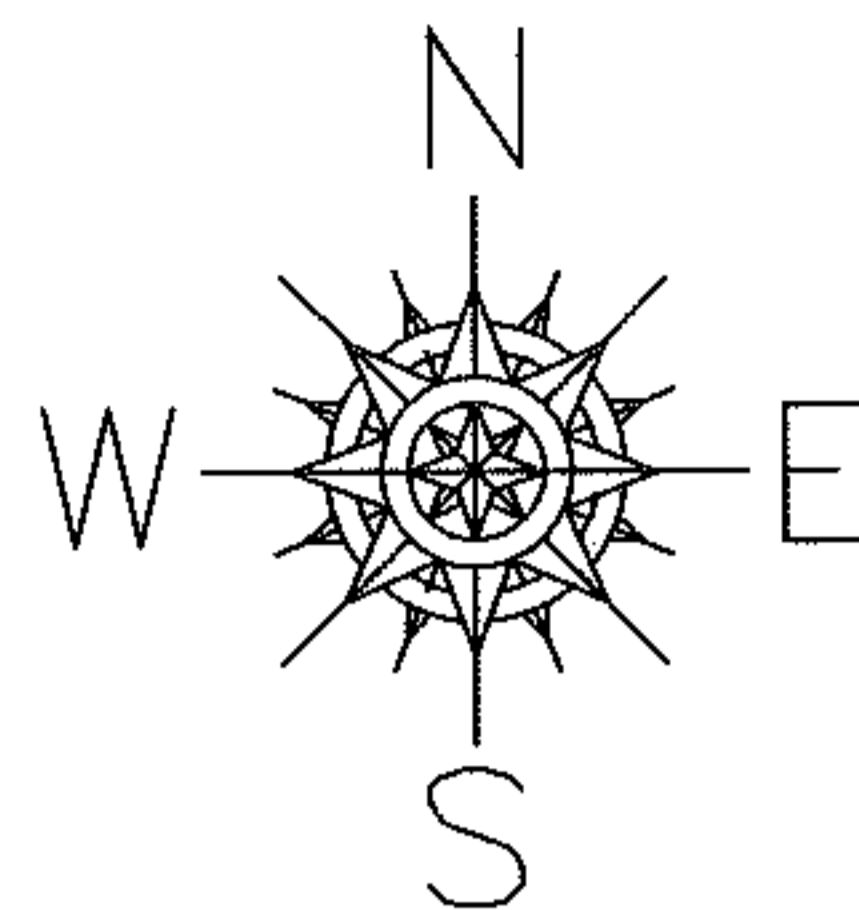


PARENT PARCEL: 06-24-085-103-023, 06-24-084-103-009

CHILD PARCEL: \_\_\_\_\_

14-02875-A

STARTING POINT: INTERSECTION OF C/L OF RUSH ST. AND C/L OF LAKE AVE.



FRONTAGE AND DEPTH TO ACREAGE CORRECTION

06-24-084-103-009

06-24-085-103-023

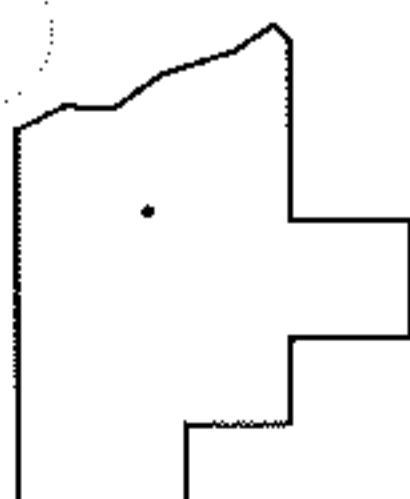
0.13 A.

0.32 A.

~~80.54 X 214.80 IRR~~

~~202.95 X 228.14~~

PER SURVEY BY THOMAS A. SIMON



SPLITS/DEEDS PROCESSED

LORAIN COUNTY TAX MAP DEPARTMENT  
226 MIDDLE AVE. ELYRIA, OHIO

SURVEYED BY: THOMAS A. SIMON

CLOSURE: .01:10,000

MAP PAGE(S): 6-81

APPROVED BY: RRM DATE: 1-23-14

SCALE: 1"= 100 PRIOR INST.: 20130490421