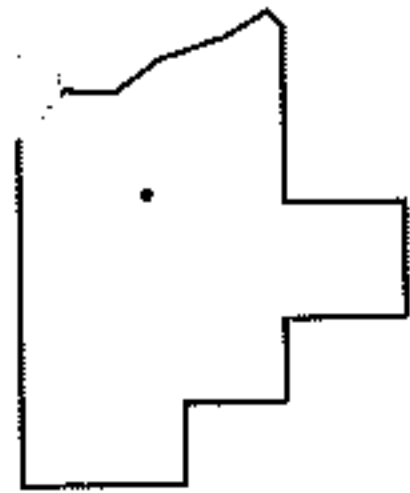
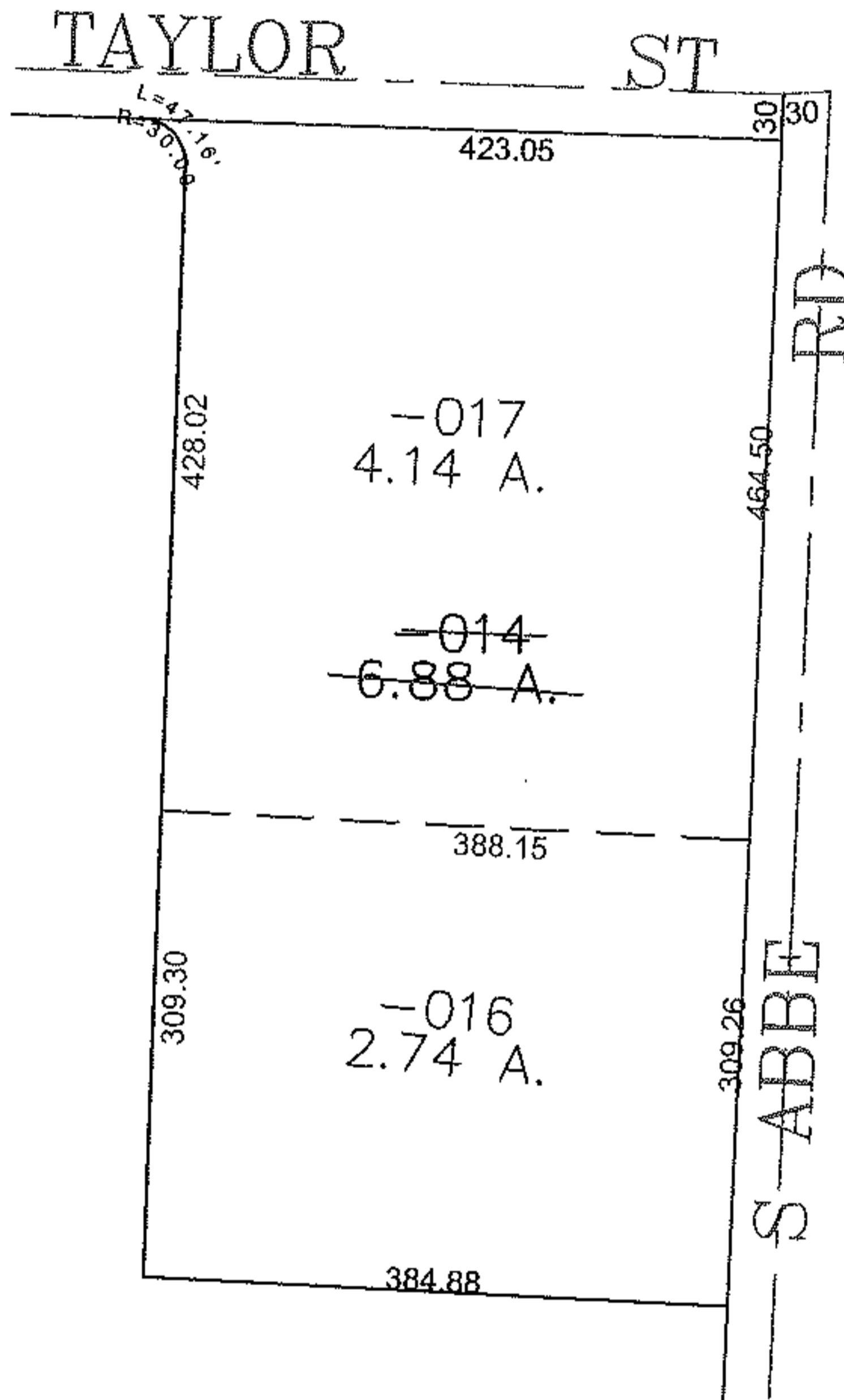
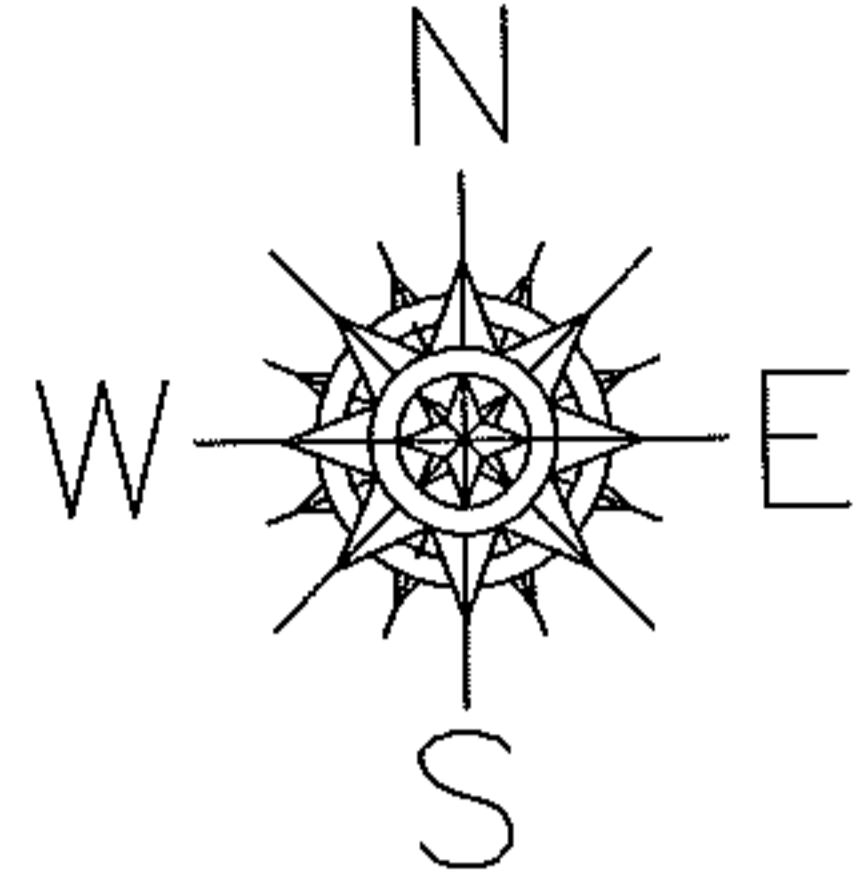


PARENT PARCEL: 06-25-012-105-014

CHILD PARCEL: 06-25-012-105-016, -017

STARTING POINT: CENTERLINE OF TAYLOR ST & S ABBE RD

10-02871



**SPLITS/DEEDS PROCESSED**

LORAIN COUNTY TAX MAP DEPARTMENT  
226 MIDDLE AVE. ELYRIA, OHIO

SURVEYED BY: THOMAS SIMON

CLOSURE: 0.00 : 10.000

MAP PAGE(S): 6-106

APPROVED BY: JAH DATE: 11-1-2010

SCALE: 1" = 200 PRIOR INSTRUMENT: 20020844343