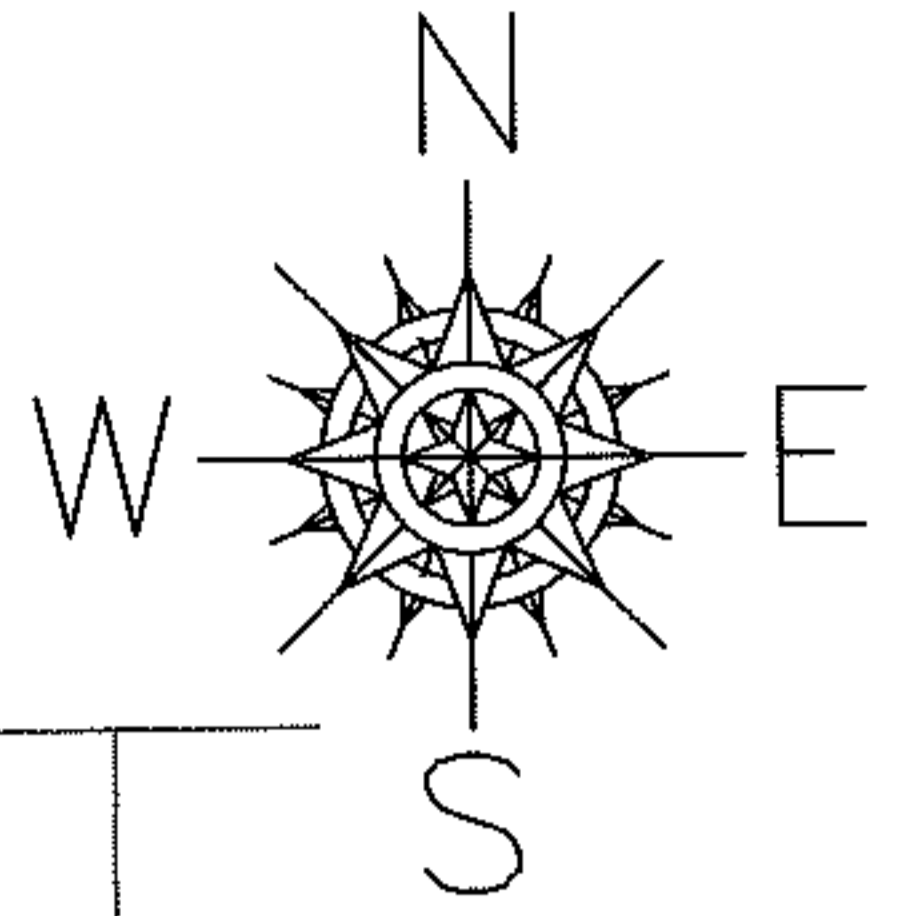
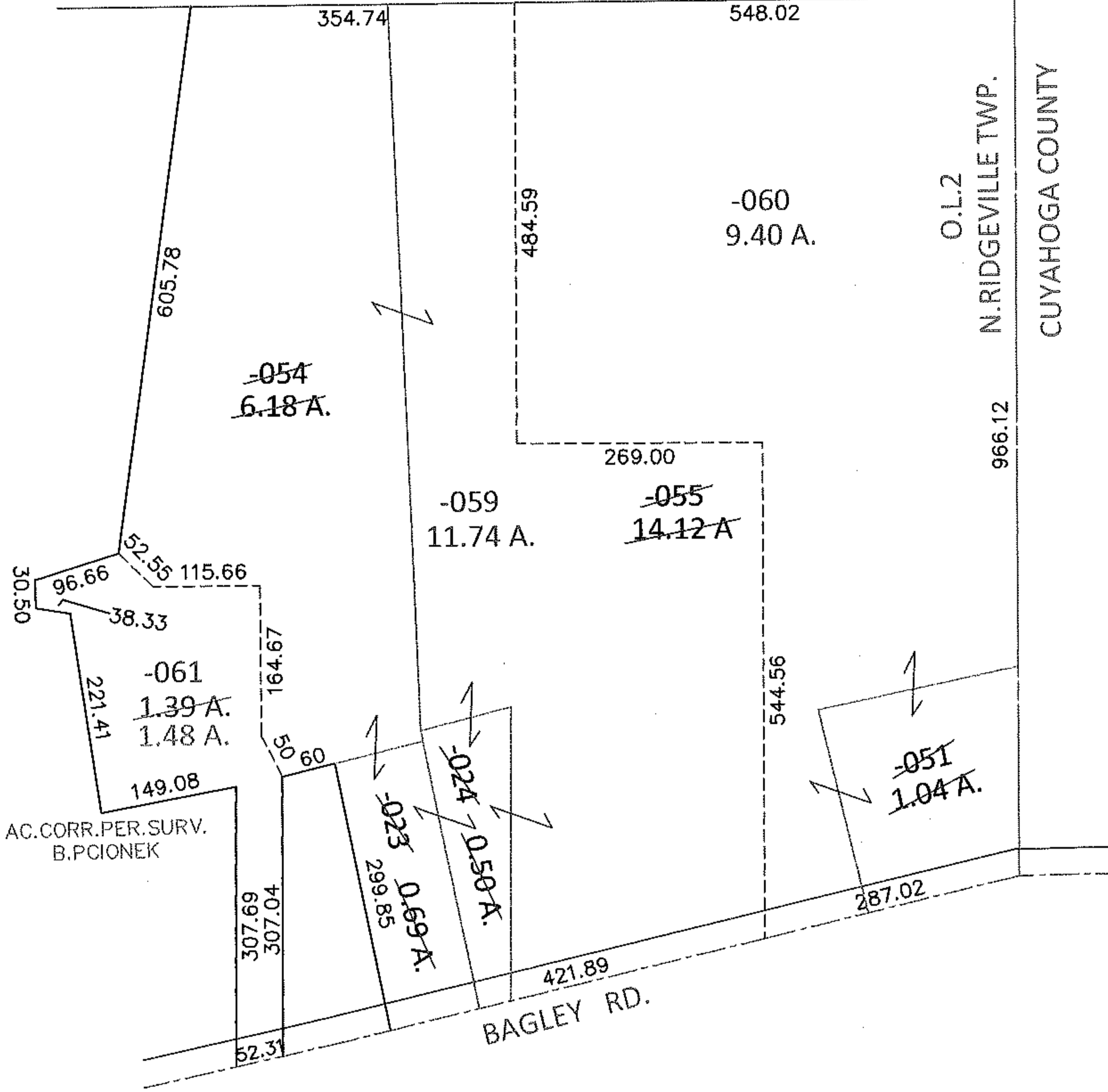


PARENT PARCEL: 07-00-002-101-023,-024,-051,-054,-055  
 CHILD PARCEL: 07-00-002-101-059 THRU -061  
 STARTING POINT: INTERSECTION OF C/L OF BAGLEY RD. AND WEST LINE OF CUYAHOGA COUNTY

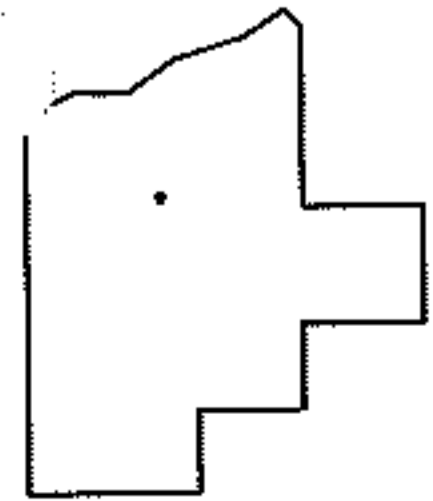
10-02869



N.Y.C. R.R.



AC. CORR. PER. SURV.  
 B. PCIONEK



**SPLITS/DEEDS PROCESSED**  
 LORAIN COUNTY TAX MAP DEPARTMENT  
 226 MIDDLE AVE. ELYRIA, OHIO

SURVEYED BY: BRIAN C. PCIONEK  
 CLOSURE: .01:10,000  
 MAP PAGE(S): 7-00-002-B  
 APPROVED BY: RRM DATE: 11-1-10  
 SCALE: 1"= 200 PRIOR INST.: 20050108038