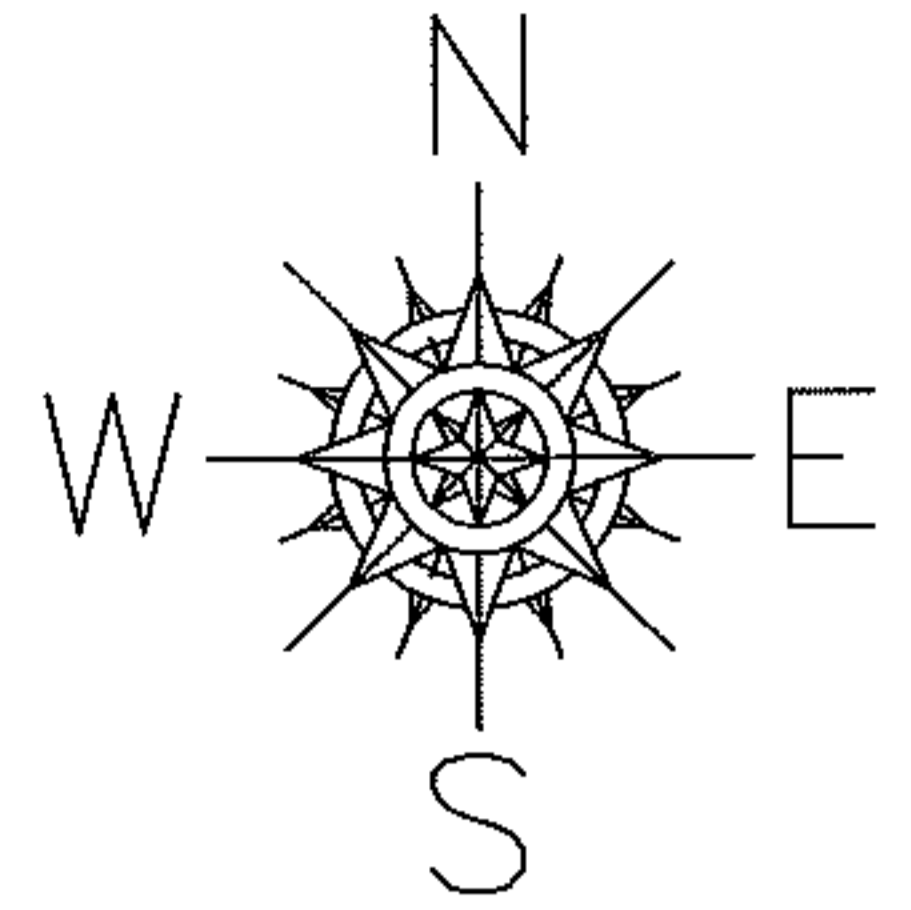


PARENT PARCEL: 06-26-096-000-003

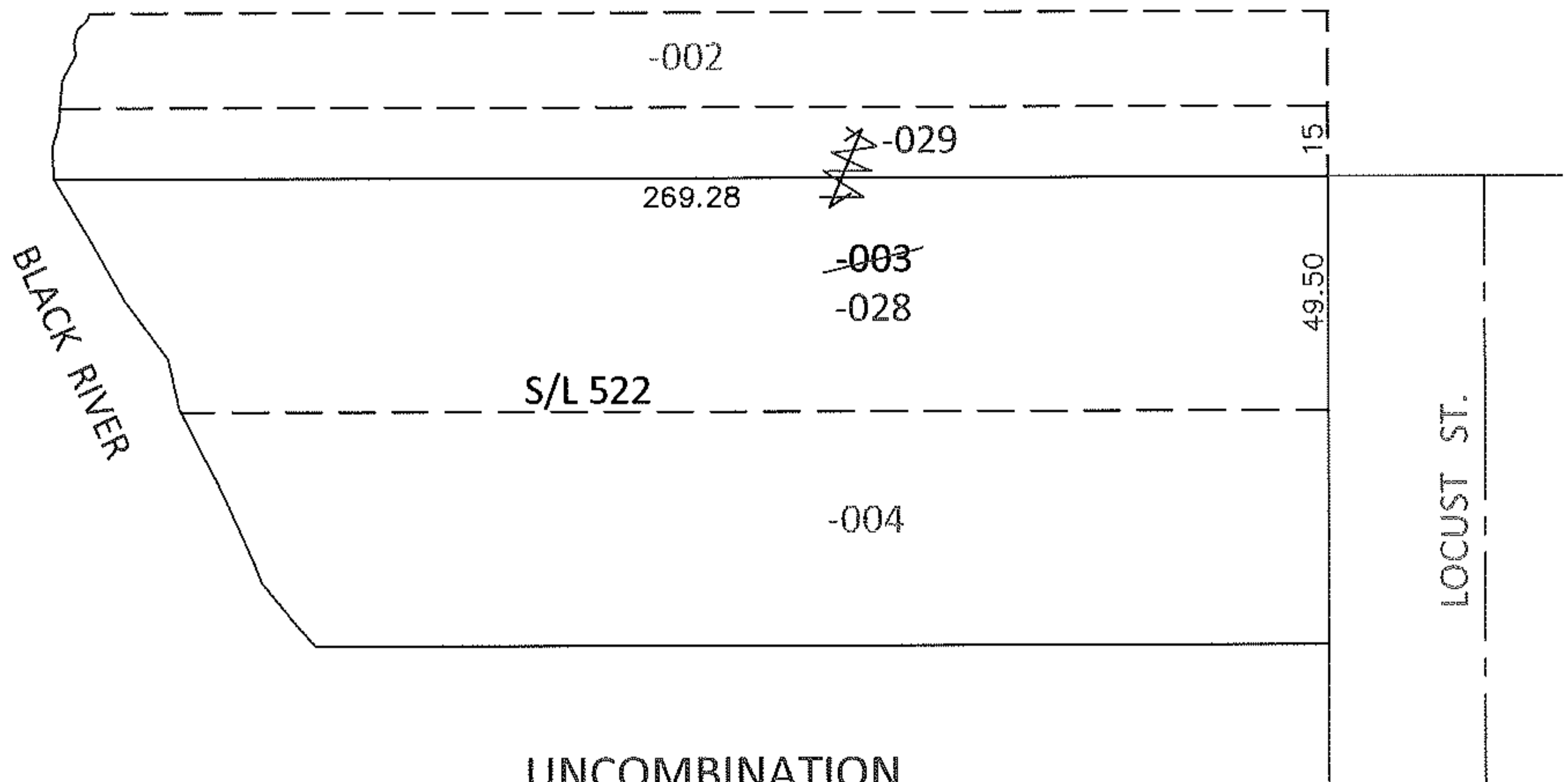
CHILD PARCEL: 06-26-096-000-028, -029

ARTING POINT: NORTHEAST CORNER OF S/L 522 IN HEMAN ELY'S ADD. (VOL.1 PG.35)

13-02863-X



S/L 523



UNCOMBINATION

06-26-096-000-003

~~49.50 X -----~~

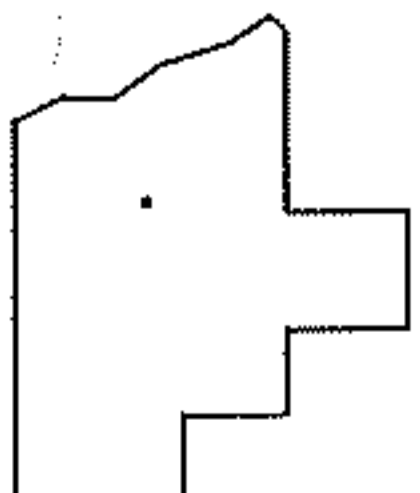
06-26-096-000-028

49.50 X 269.28

06-26-096-000-029

15 X 269.28

PER PRIOR DEEDS



SPLITS/DEEDS PROCESSED

LORAIN COUNTY TAX MAP DEPARTMENT
226 MIDDLE AVE. ELYRIA, OHIO

SURVEYED BY: N/A

CLOSURE: N/A

MAP PAGE(S): 6-3

APPROVED BY: RRM DATE: 12-19-13

SCALE: 1"= 50' PRIOR INST.: 20130448029