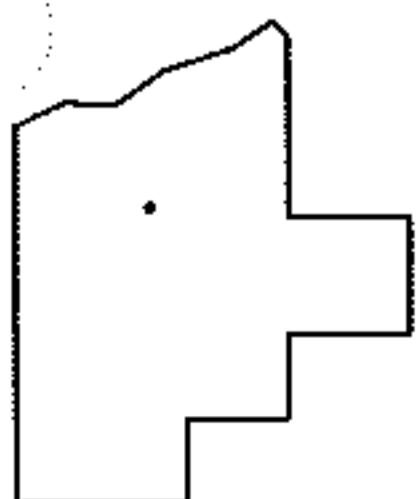
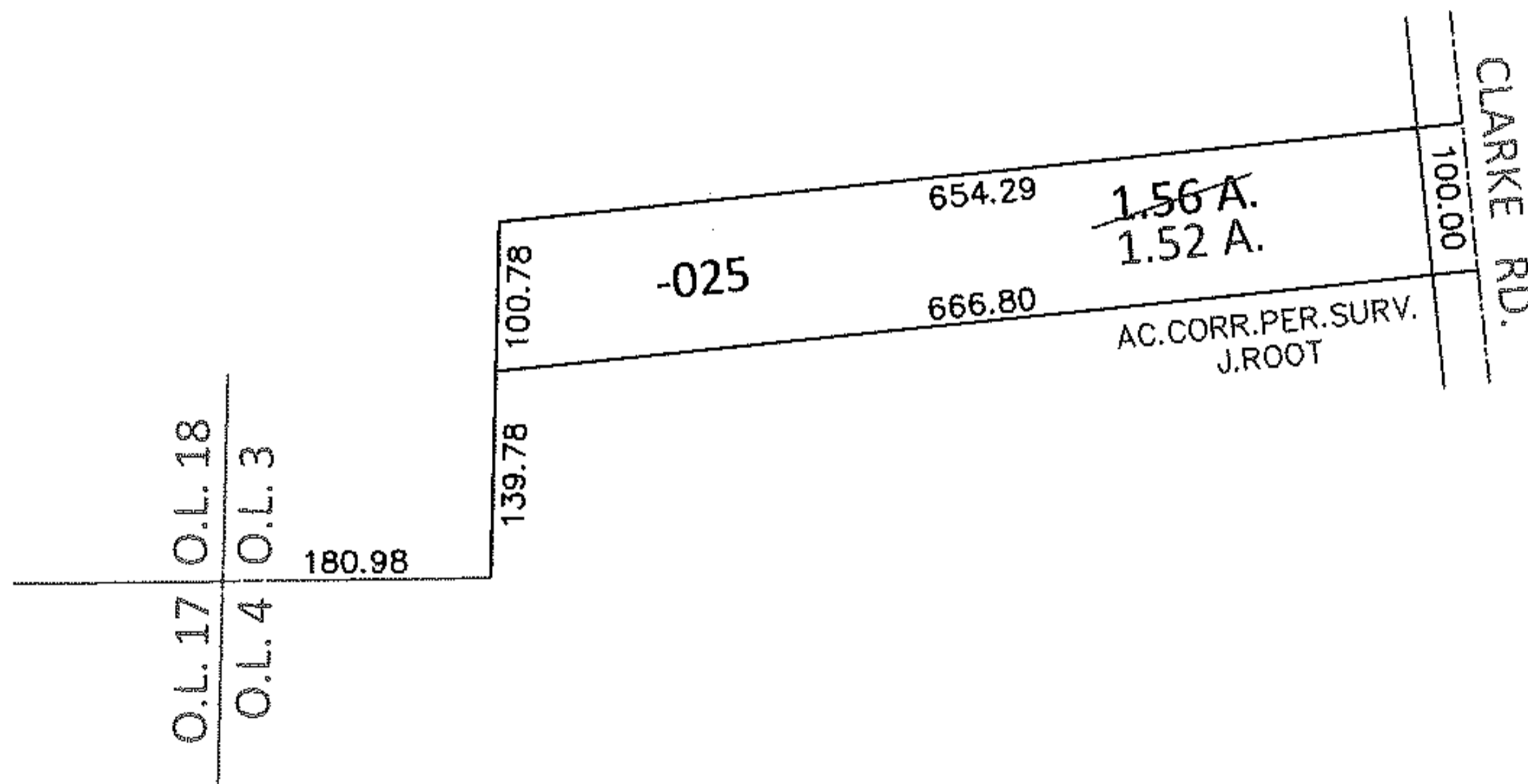
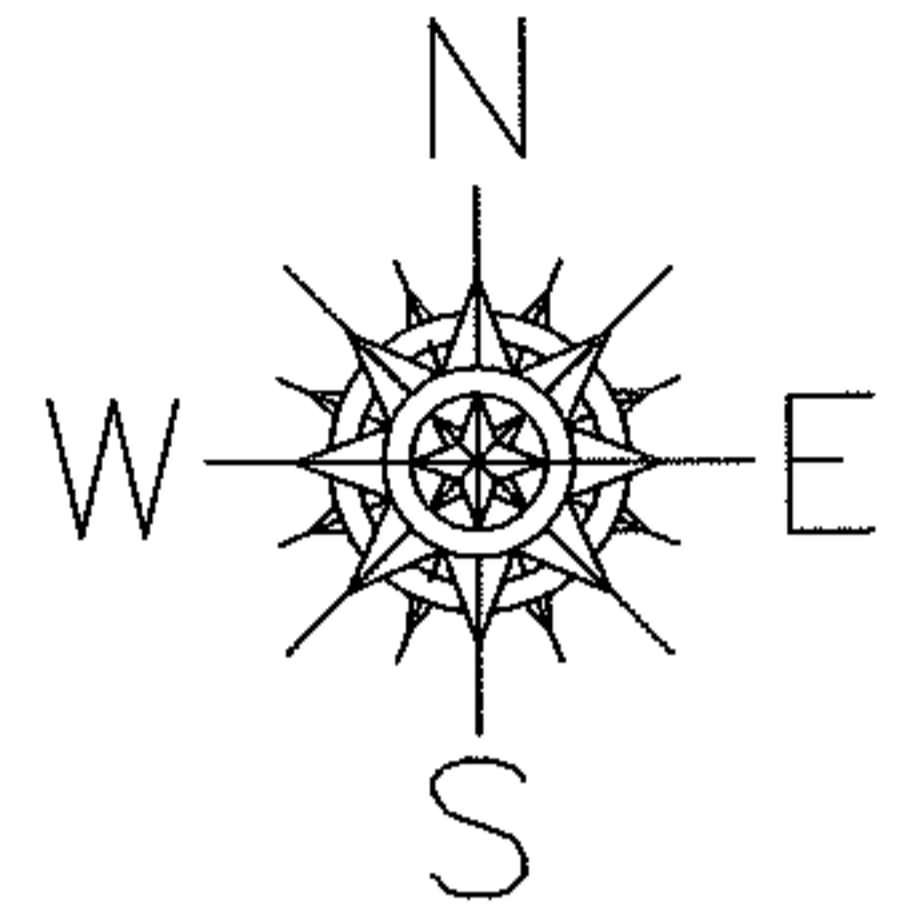


PARENT PARCEL: 12-00-003-000-025

CHILD PARCEL: _____

13-02861-A

STARTING POINT: SOUTHWEST CORNER OF O.L.3



SPLITS/DEEDS PROCESSED

LORAIN COUNTY TAX MAP DEPARTMENT
226 MIDDLE AVE. ELYRIA, OHIO

SURVEYED BY: JAMES B. ROOT

CLOSURE: .01:10,000

MAP PAGE(S): 12-00-003-A

APPROVED BY: RRM DATE: 1-23-14

SCALE: 1"= 200 PRIOR INST.: 20110361583