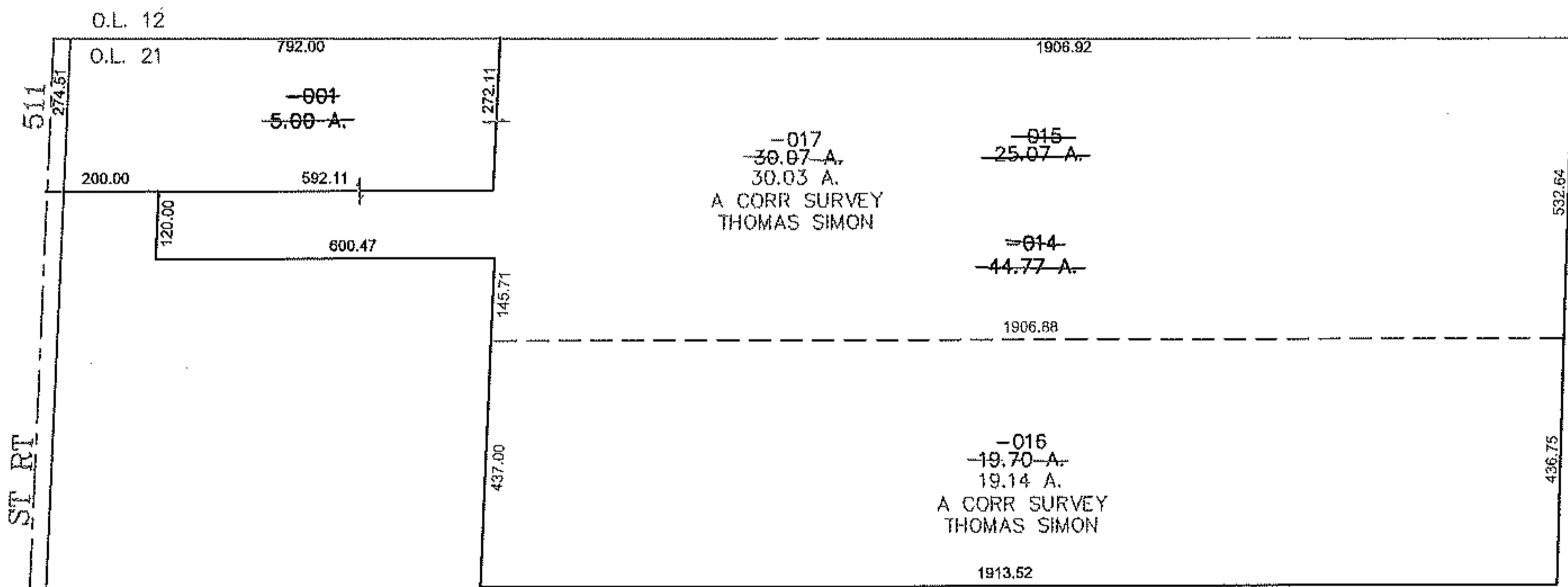
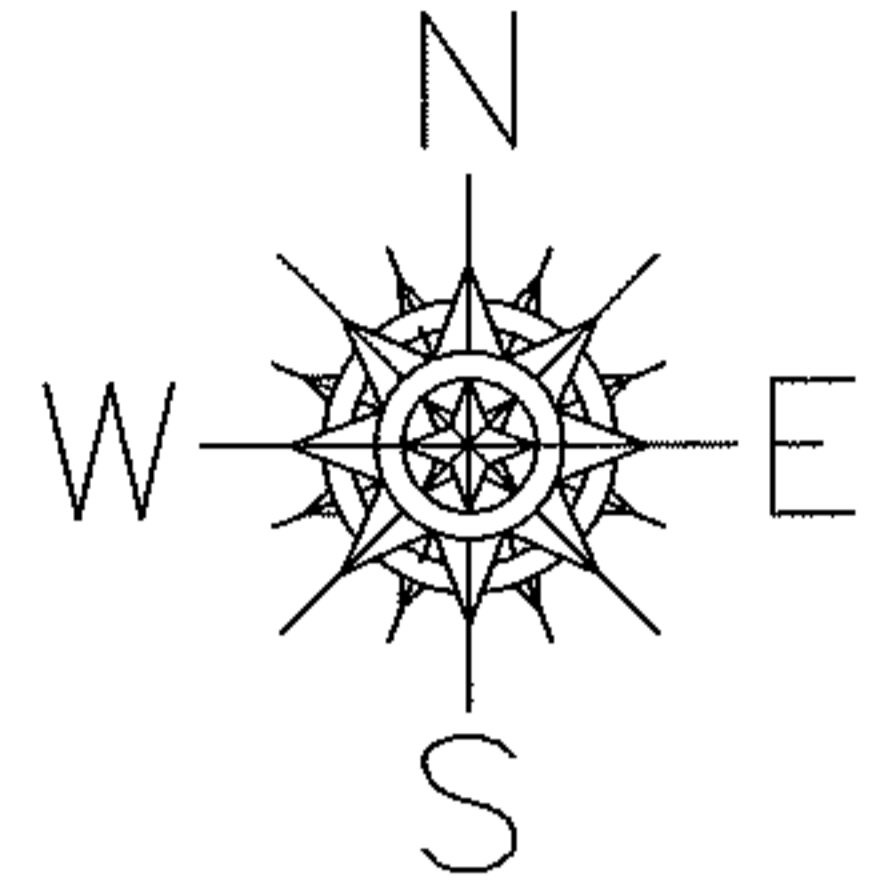


PARENT PARCEL: 13-10-021-000-014, 001

CHILD PARCEL: 13-10-021-000-015 THRU -017

STARTING POINT: CENTERLINE OF ST RT 511 & O.L. 21

10-02854



SPLITS/DEEDS PROCESSED

LORAIN COUNTY TAX MAP DEPARTMENT
226 MIDDLE AVE. ELYRIA, OHIO

SURVEYED BY: THOMAS SIMON

CLOSURE: 0.00 : 10,000

MAP PAGE(S): 13-10-021-A,B

APPROVED BY: JAH DATE: 8-31-2010

SCALE: 1" = 400 PRIOR INSTRUMENT: 20070187904