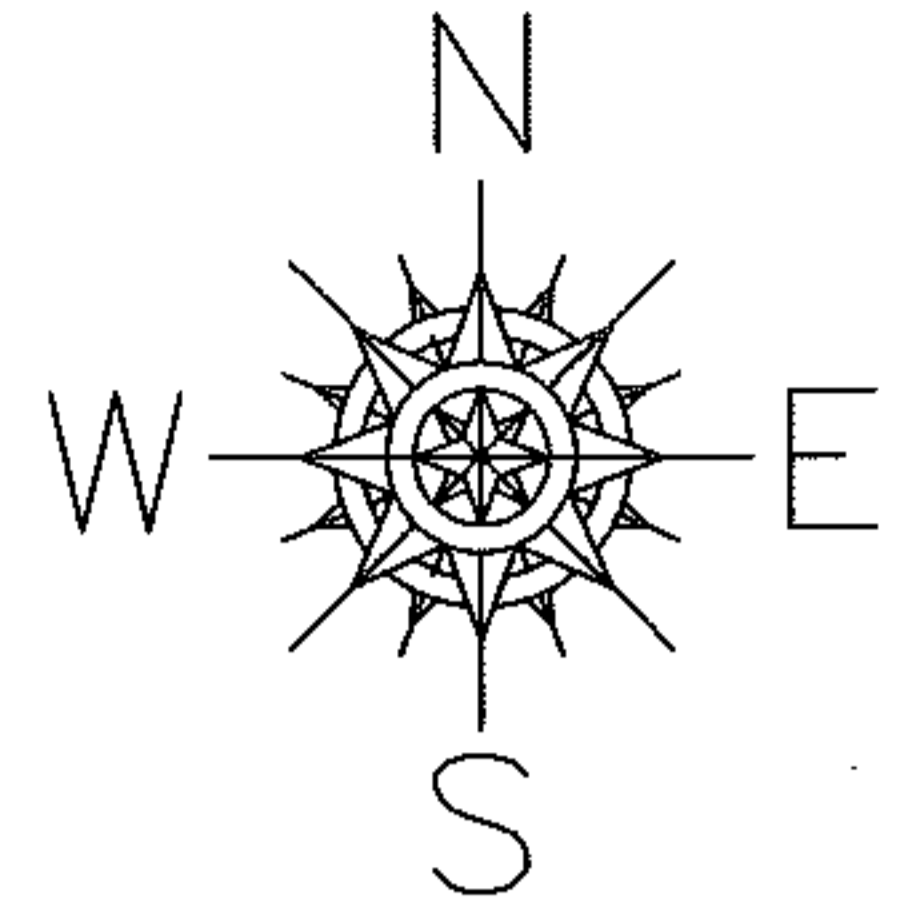


PARENT PARCEL: 10-00-013-000-209

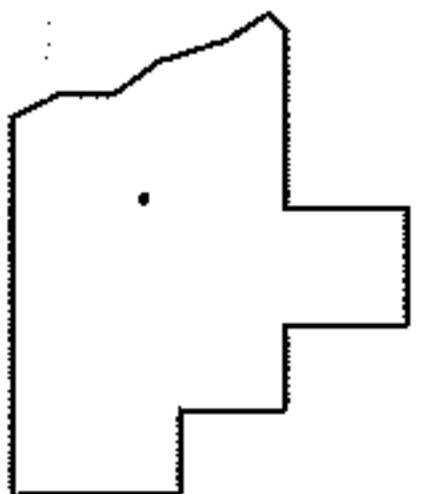
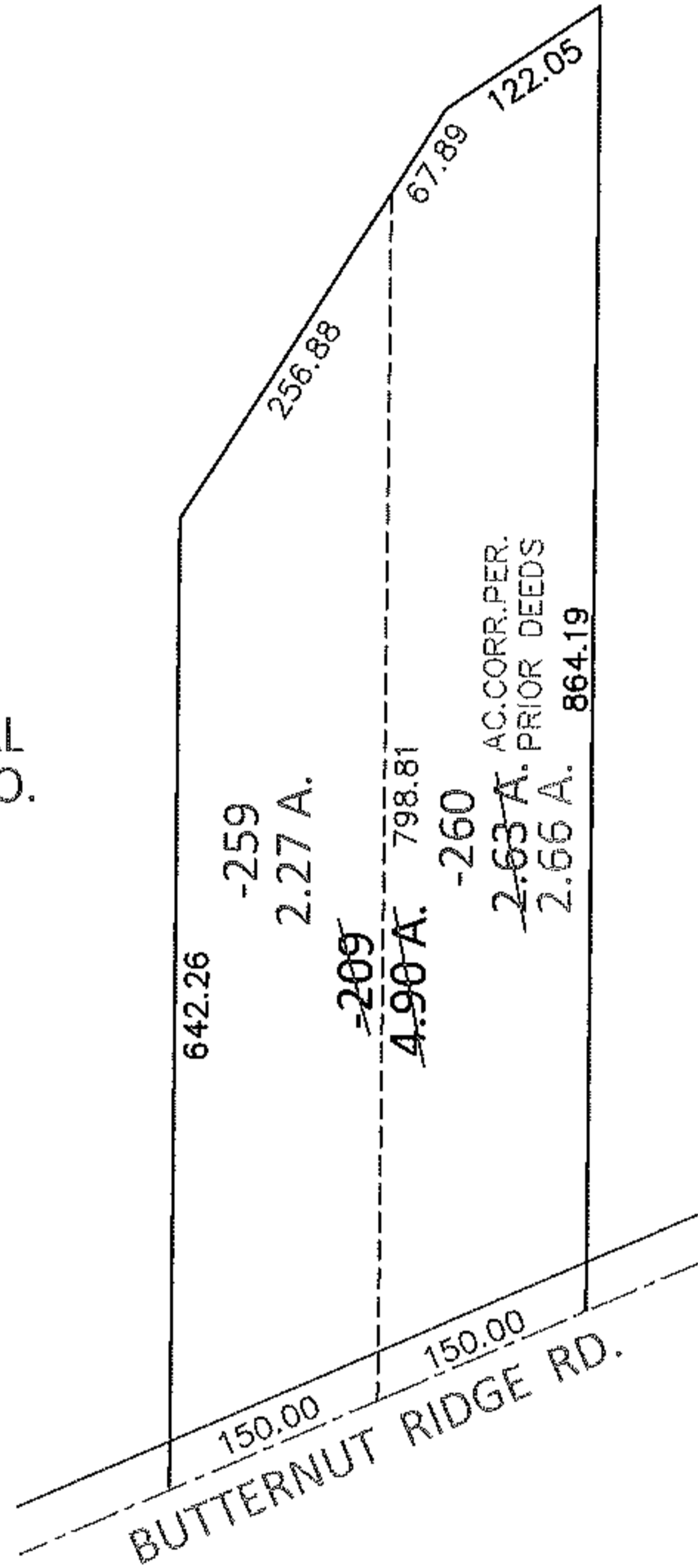
CHILD PARCEL: 10-00-013-000-259, -260

13-02852-U

STARTING POINT: SOUTHEAST CORNER OF LAND CONVEYED TO DONALD J. GILLES (DV 1238/203)



UNCOMBINATION
PER PRIOR DEEDS
TO REMOVE UPDATE LEGAL
FOR 2 LEGALS, 1 PARCEL NO.



SPLITS/DEEDS PROCESSED

LORAIN COUNTY TAX MAP DEPARTMENT
226 MIDDLE AVE. ELYRIA, OHIO

SURVEYED BY: N/A

CLOSURE: .01:10,000

MAP PAGE(S): 10-00-013-C

APPROVED BY: RRM DATE: 11-26-13

SCALE: 1"= 200 PRIOR INST.: 20130475951