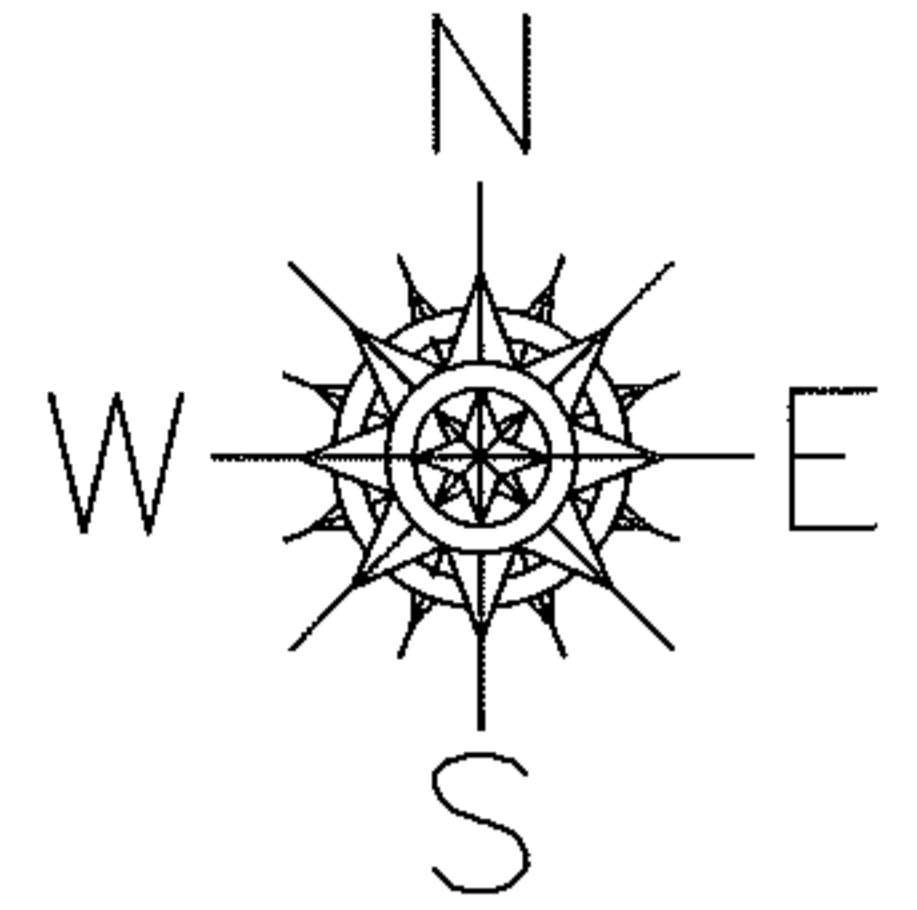


PARENT PARCEL: 02-02-005-109-057, -058

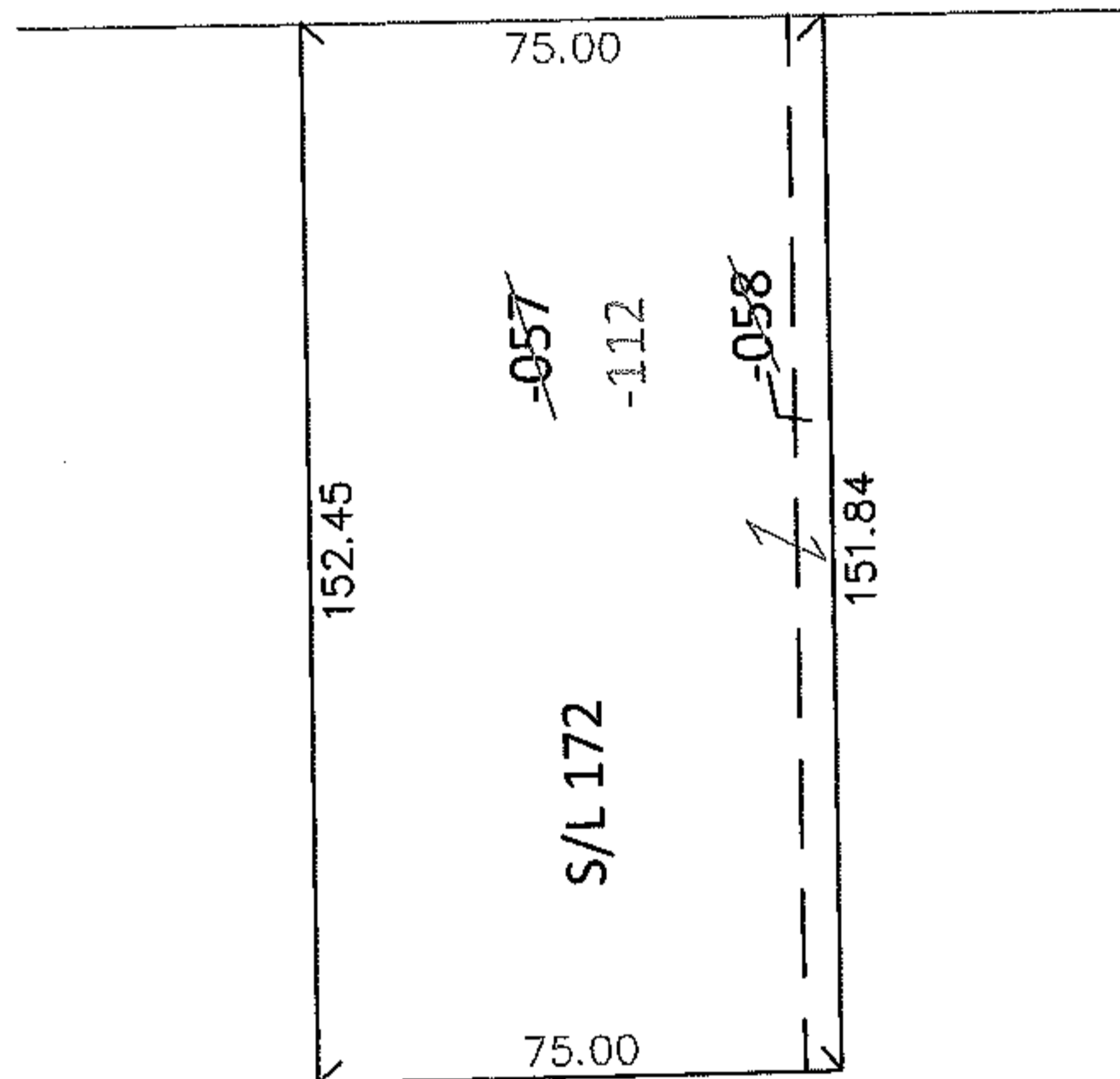
CHILD PARCEL: 02-02-005-109-112

STARTING POINT: S/L 172 IN SEVEN PINES SUB. NO.4 (VOL.25 PG.43)

13-02848-C



NARRAGANSETT BLVD.

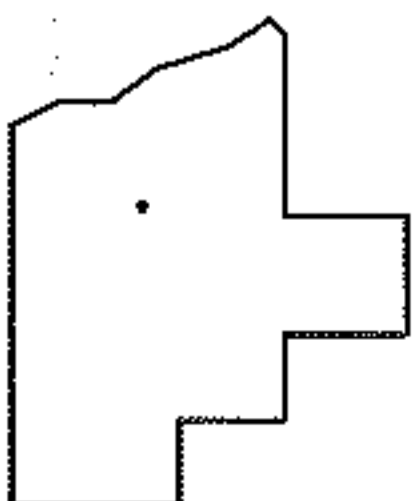


COMBINATION CORRECTION

~~02-02-005-109-057~~ ~~02-02-005-109-058~~
~~70 X 152.45~~ ~~5 X 151.87~~

02-02-005-109-112
75 X 152.45

PER PRIOR DEEDS
TO REMOVE UPDATE LEGAL
FOR 1 LEGAL, 2 PARCEL NOS.



SPLITS/DEEDS PROCESSED

LORAIN COUNTY TAX MAP DEPARTMENT
226 MIDDLE AVE. ELYRIA, OHIO

SURVEYED BY: N/A

CLOSURE: N/A

MAP PAGE(S): 2-02-005-A

APPROVED BY: RRM DATE: 11-19-13

SCALE: 1"= 50' PRIOR INST.: 20130479509