

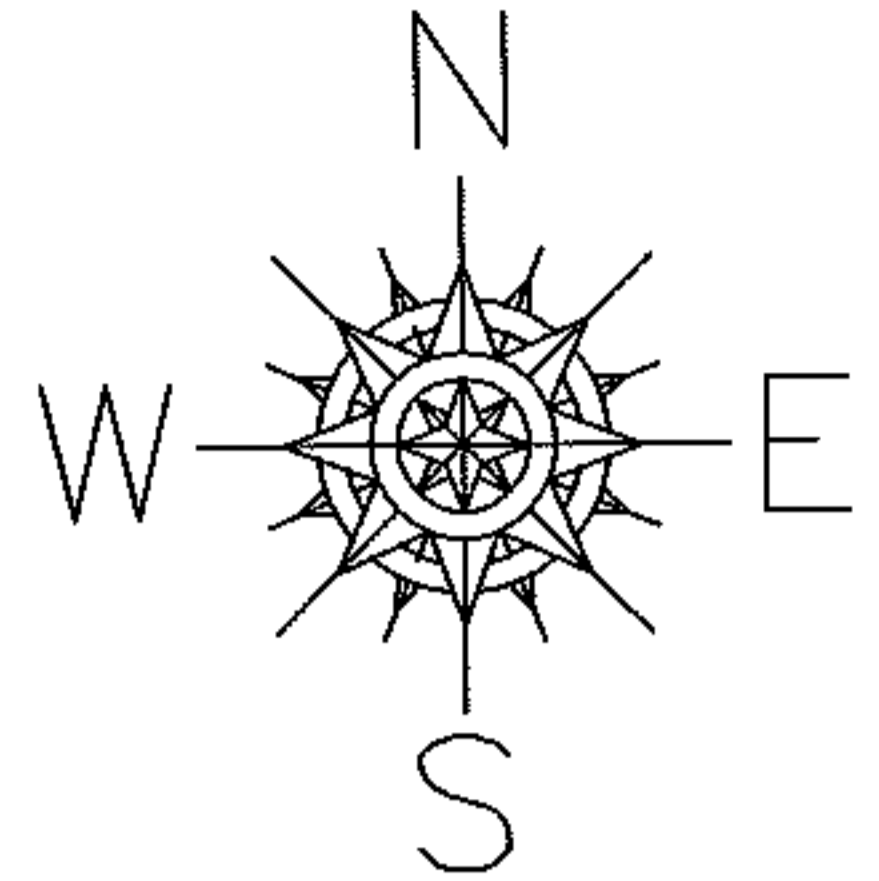
RASTER

PARENT PARCEL: 12-00-068-000-009

CHILD PARCEL: 12-00-068-000-012, -013

STARTING POINT: CENTERLINE OF AKINS RD & O.L. 68

10-02847

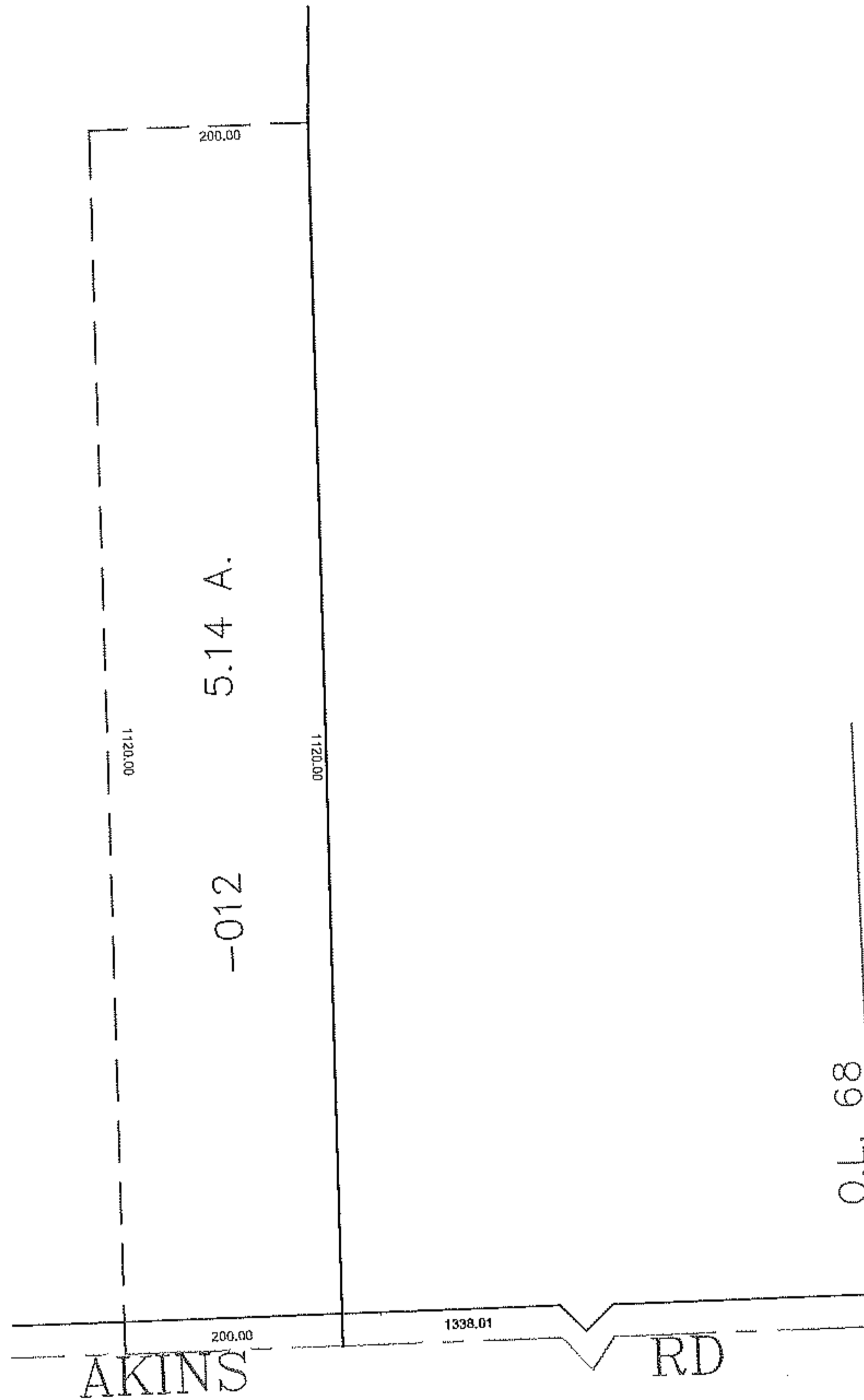


~~-009~~  
~~108.95 A.~~  
~~-013~~  
103.81 A.

5.14 A.

-012

O.L. 68  
O.L. 53



**SPLITS/DEEDS PROCESSED**  
LORAIN COUNTY TAX MAP DEPARTMENT  
226 MIDDLE AVE. ELYRIA, OHIO

SURVEYED BY: THOMAS J NEFF  
CLOSURE: 0.00 : 10.000  
MAP PAGE(S): 12-00-068-A  
APPROVED BY: JAH DATE: 7-28-2010  
SCALE: 1" = 200' PRIOR INSTRUMENT: DV 1374/93