

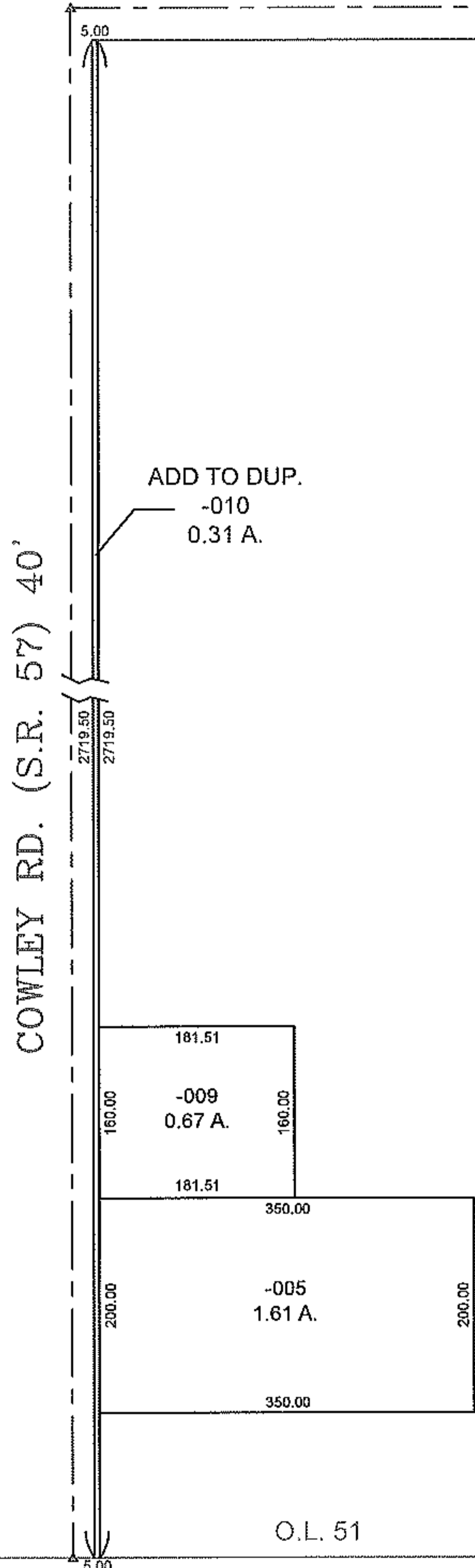
PARENT PARCEL: ADD TO DUPLICATE

CHILD PARCEL: 16-00-051-000-010

STARTING POINT: SOUTH R.O.W. OF ELYRIA-MEDINA RD. (S.R. 303) &
EAST R.O.W. OF COWLEY RD. (S.R. 57)

13-02846-A

ELYRIA-MEDINA RD. (S.R. 303) 60'



ADD TO DUP.
-010
0.31 A.

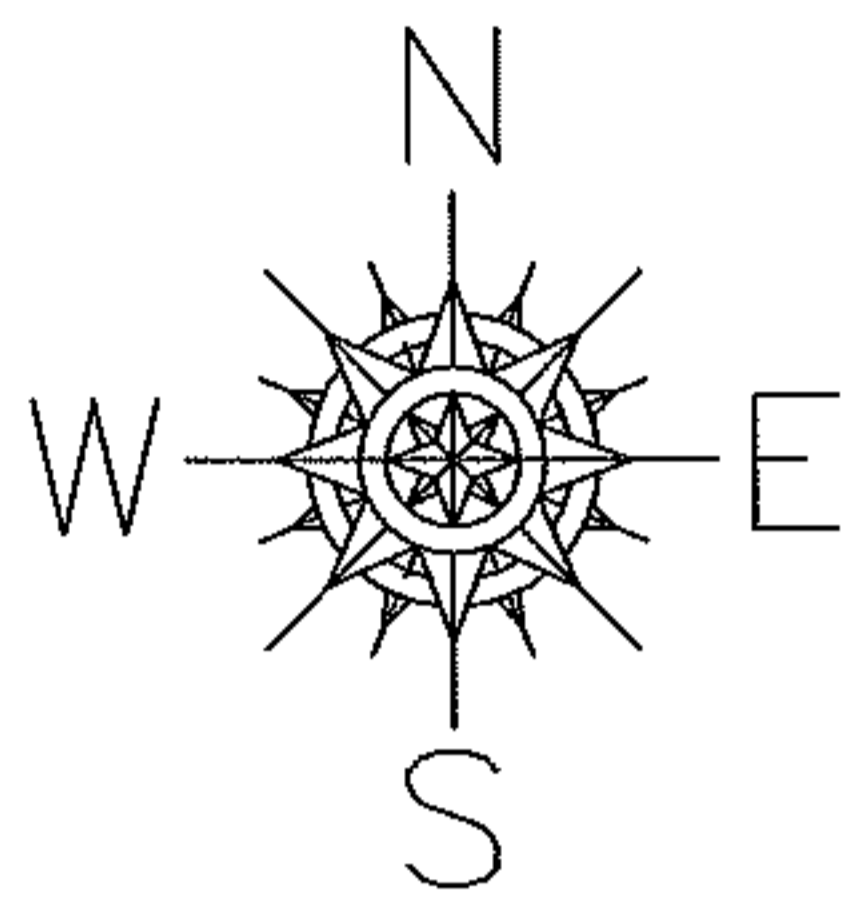
ADD TO DUPLICATE

16-00-051-000-010

0.31 A.

PER DV. 219 PG. 432

JOHN GRABENSTETTER
TO
COUNTY COMMISSIONER
OF LORAIN COUNTY
5' X 2719.5'
STRIP



SPLITS/DEEDS PROCESSED
LORAIN COUNTY TAX MAP DEPARTMENT
226 MIDDLE AVE. ELYRIA, OHIO

SURVEYED BY: NA
CLOSURE: NA
MAP PAGE(S): 16-H
APPROVED BY: TJS DATE: 11/13/13
SCALE: 1" = 200' PRIOR INSTRUMENT: DV 219/432