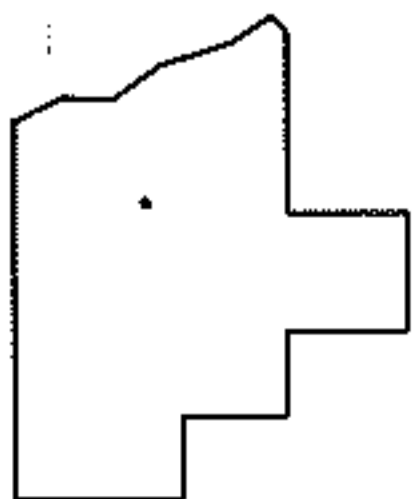
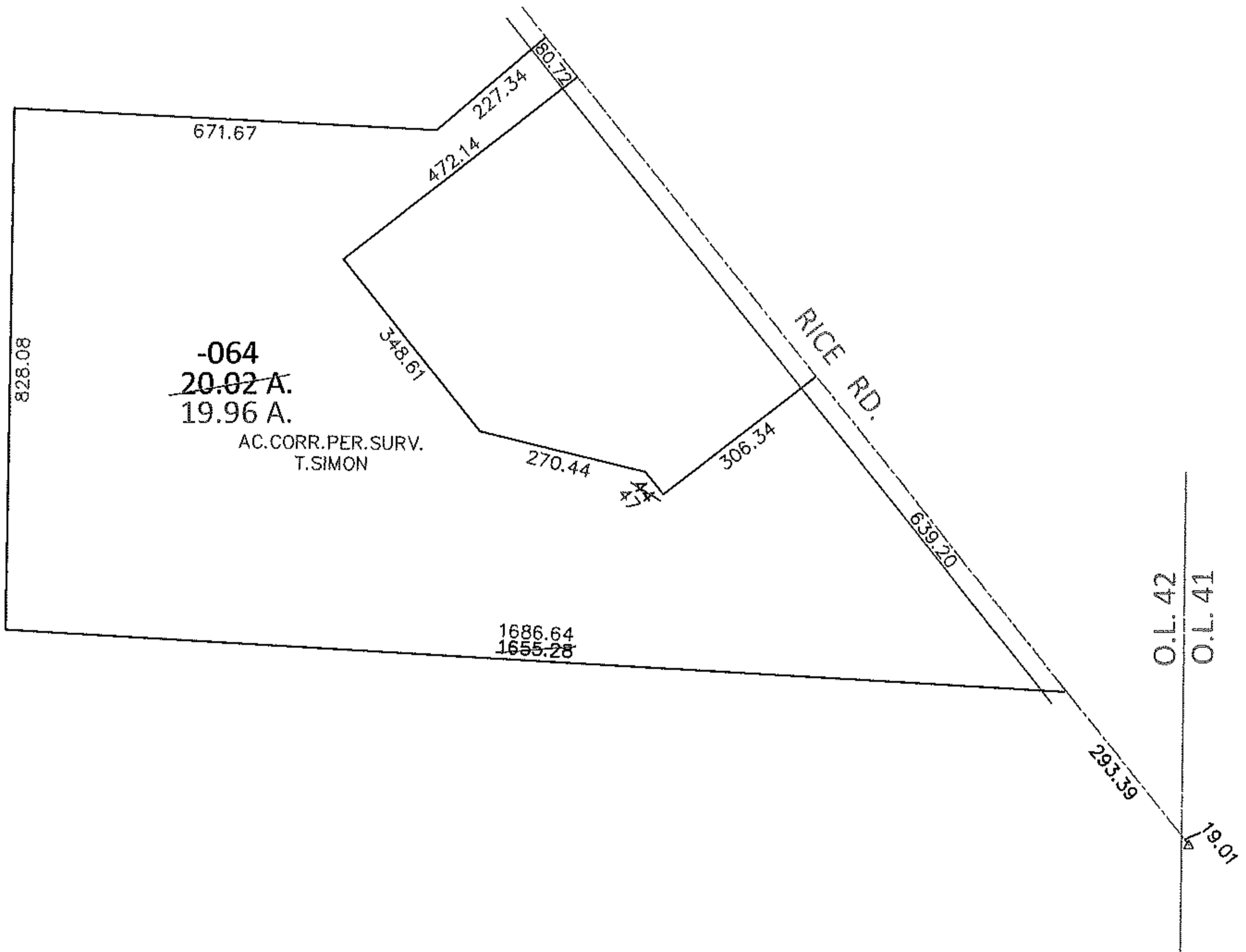
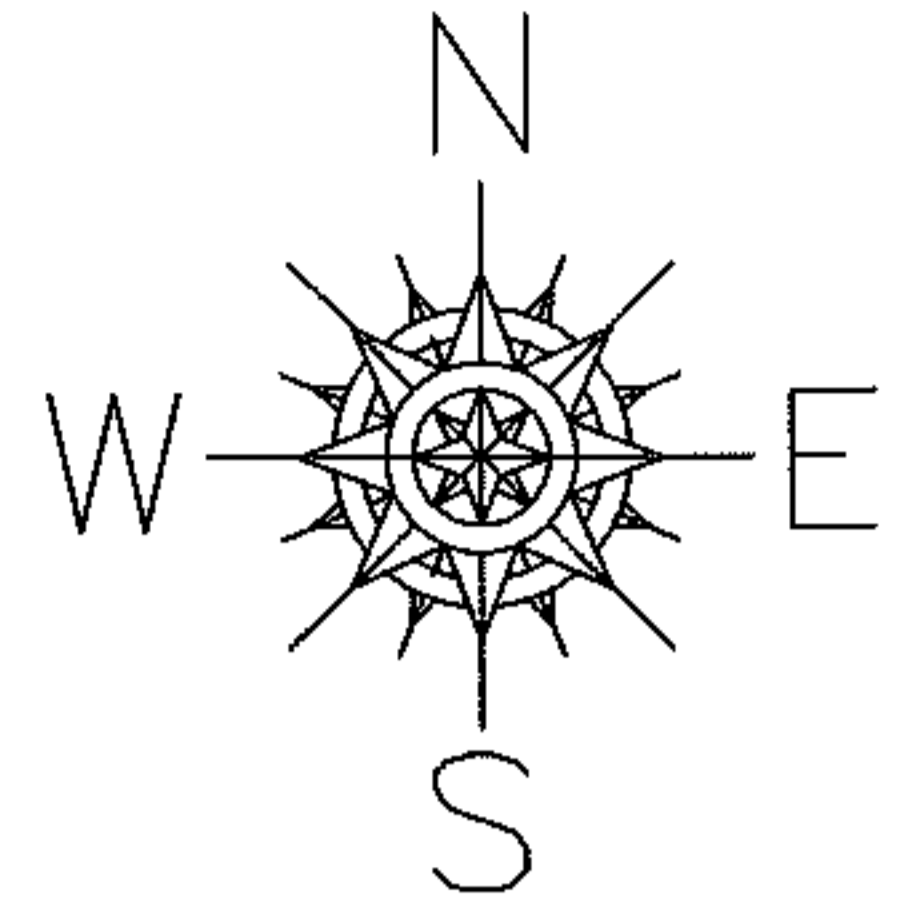


PARENT PARCEL: 01-00-042-000-064

CHILD PARCEL: \_\_\_\_\_

13-02839-A

STARTING POINT: INTERSECTION OF C/L OF RICE RD. AND EAST LINE OF O.L. 42



**SPLITS/DEEDS PROCESSED**

LORAIN COUNTY TAX MAP DEPARTMENT  
226 MIDDLE AVE. ELYRIA, OHIO

SURVEYED BY: THOMAS A. SIMON

CLOSURE: .01:10,000

MAP PAGE(S): 1-H

APPROVED BY: RRM DATE: 11-5-13

SCALE: 1" = 300 PRIOR INST.: 20080256436