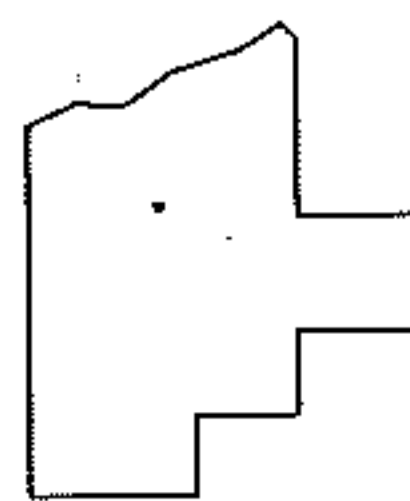
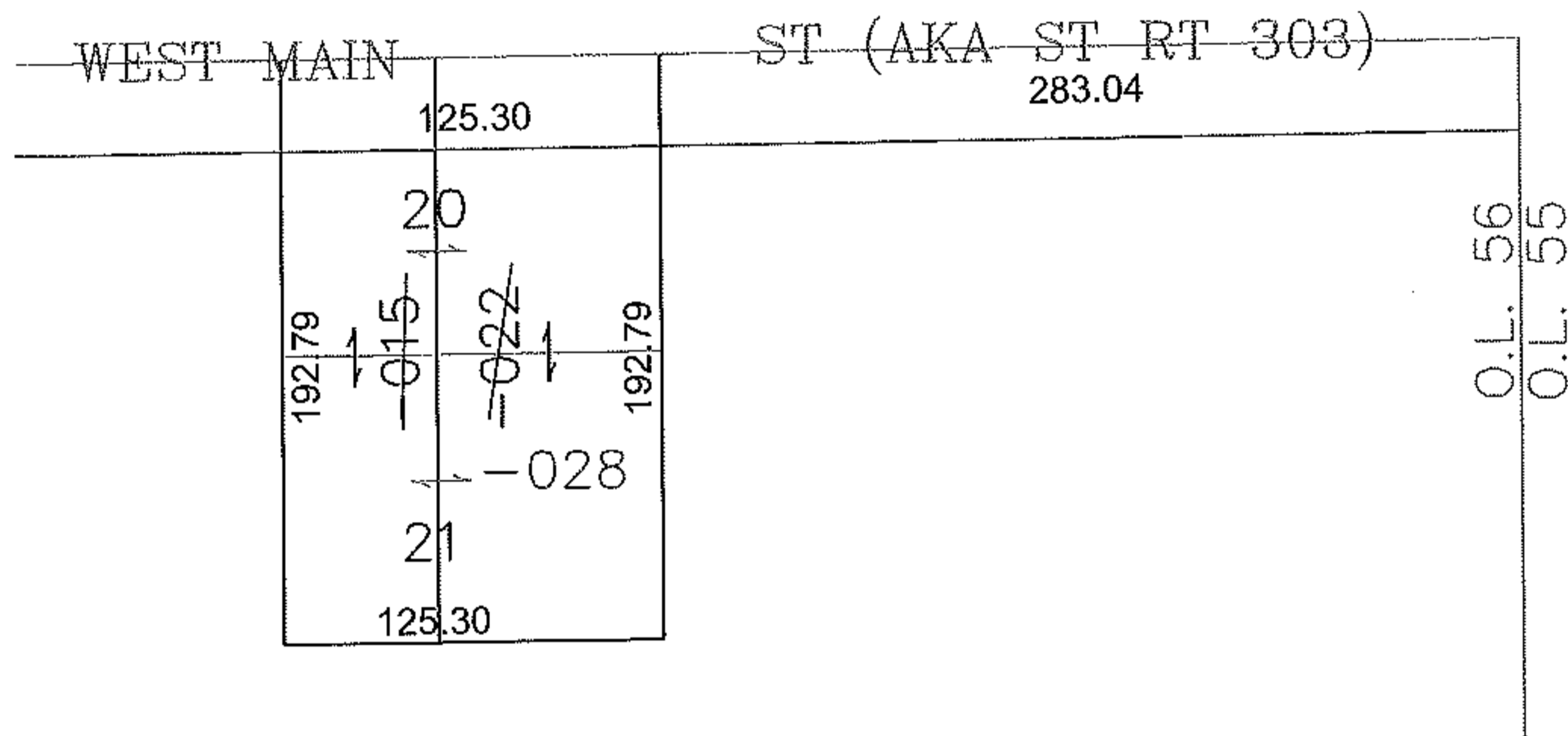
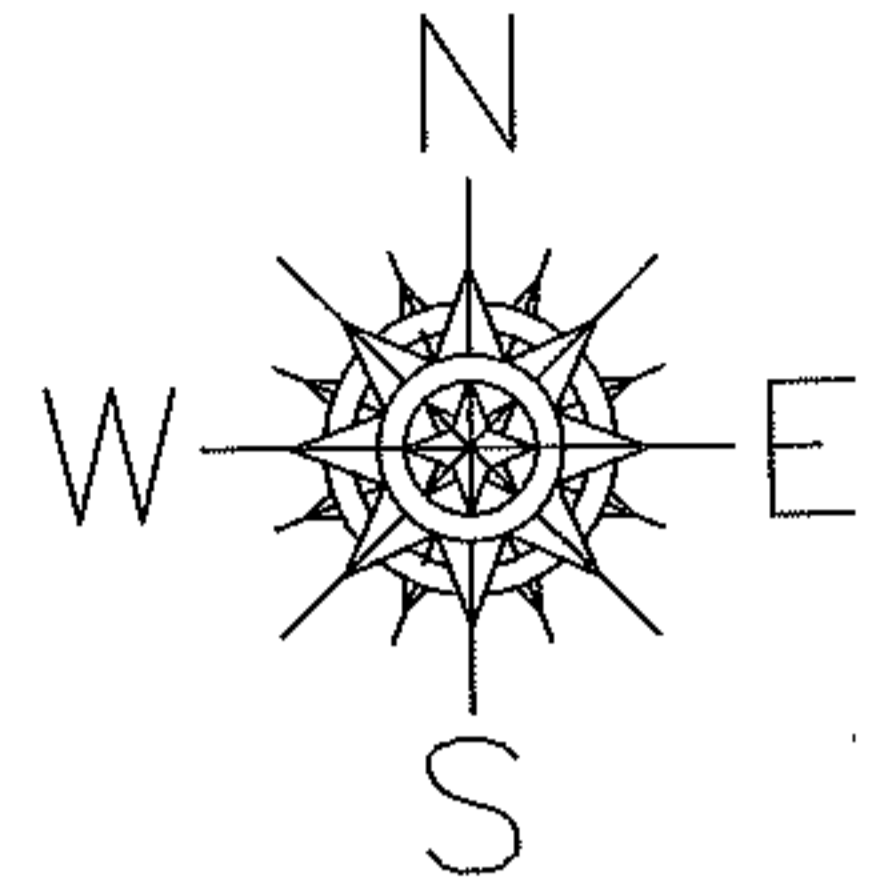


PARENT PARCEL: 15-00-056-102-015, -022

CHILD PARCEL: 15-00-056-102-028

STARTING POINT: CENTERLINE OF WEST MAIN ST & O.L. 56

10-02838



SPLITS/DEEDS PROCESSED

LORAIN COUNTY TAX MAP DEPARTMENT
226 MIDDLE AVE. ELYRIA, OHIO

SURVEYED BY: MICHAEL BRAMHALL

CLOSURE: 0.00 : 10.000

MAP PAGE(S): 15-00-056-B

APPROVED BY: JAH DATE: 6-28-2010

SCALE: 1" = 100' PRIOR INSTRUMENT: 20090296500