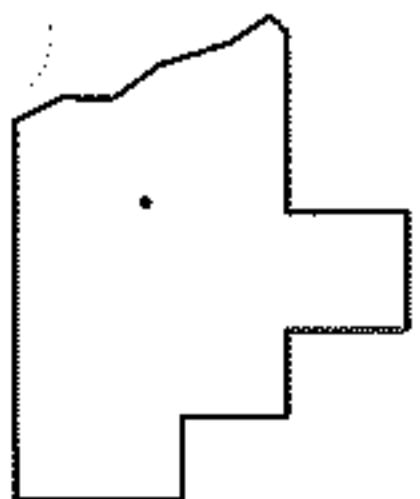
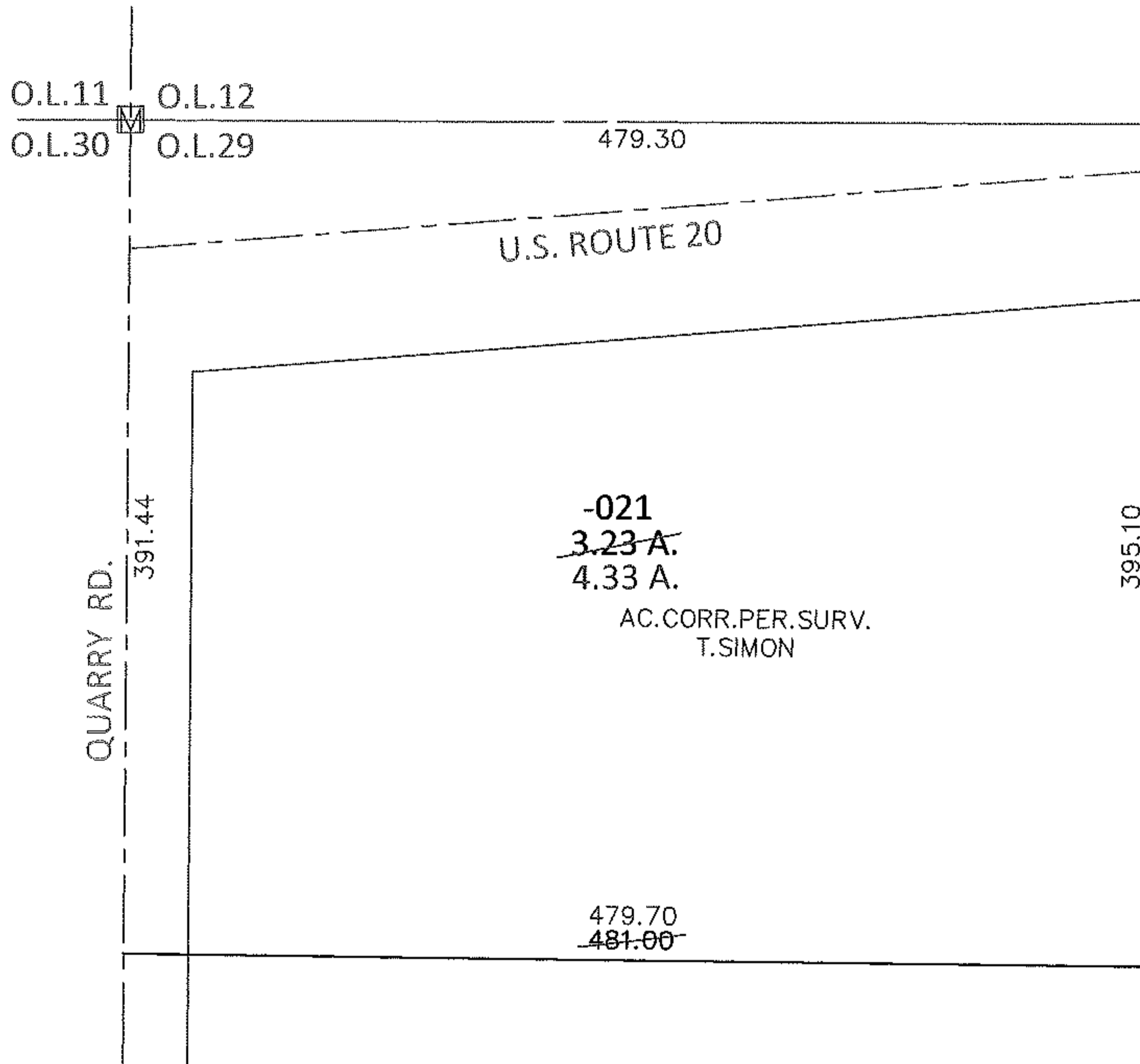
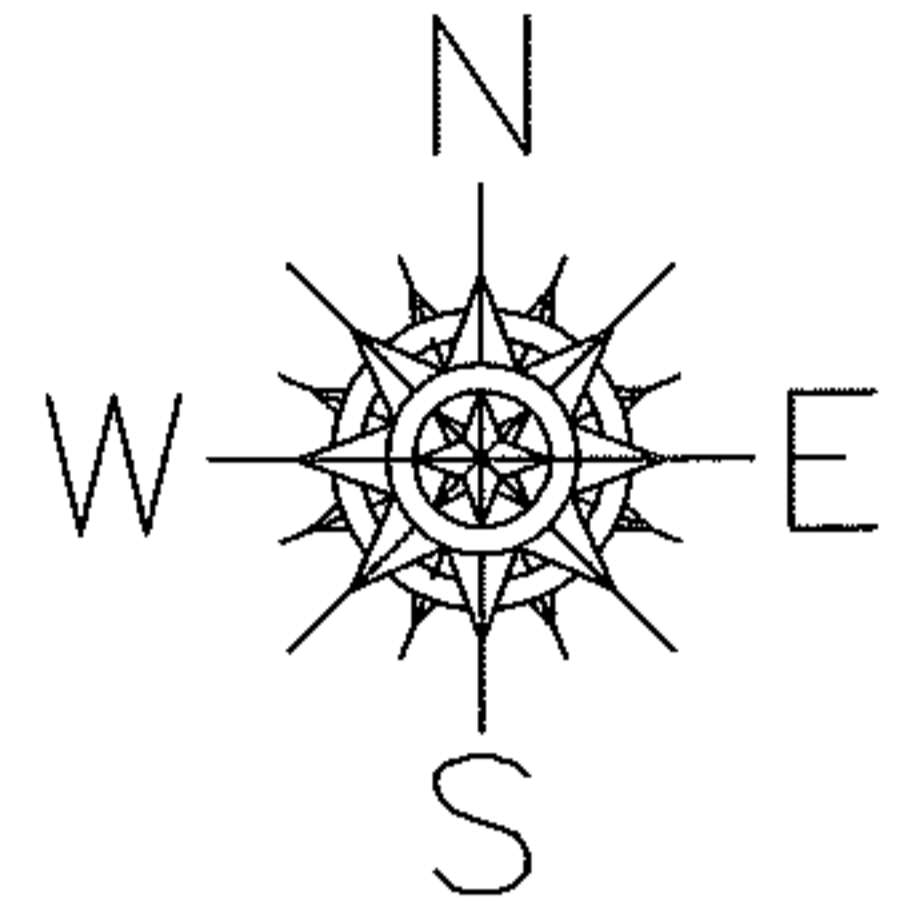


PARENT PARCEL: 14-00-029-000-021

CHILD PARCEL: _____

13-02838-A

STARTING POINT: AT A MON BOX AT THE NORTHWEST CORNER OF O.L.29



SPLITS/DEEDS PROCESSED

LORAIN COUNTY TAX MAP DEPARTMENT
226 MIDDLE AVE. ELYRIA, OHIO

SURVEYED BY: THOMAS A. SIMON

CLOSURE: .01:10,000

MAP PAGE(S): 14-A

APPROVED BY: RRM DATE: 11-4-13

SCALE: 1"= 100 PRIOR INST.: 20120429579