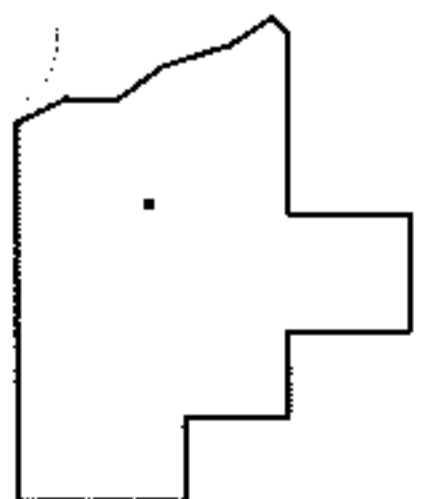
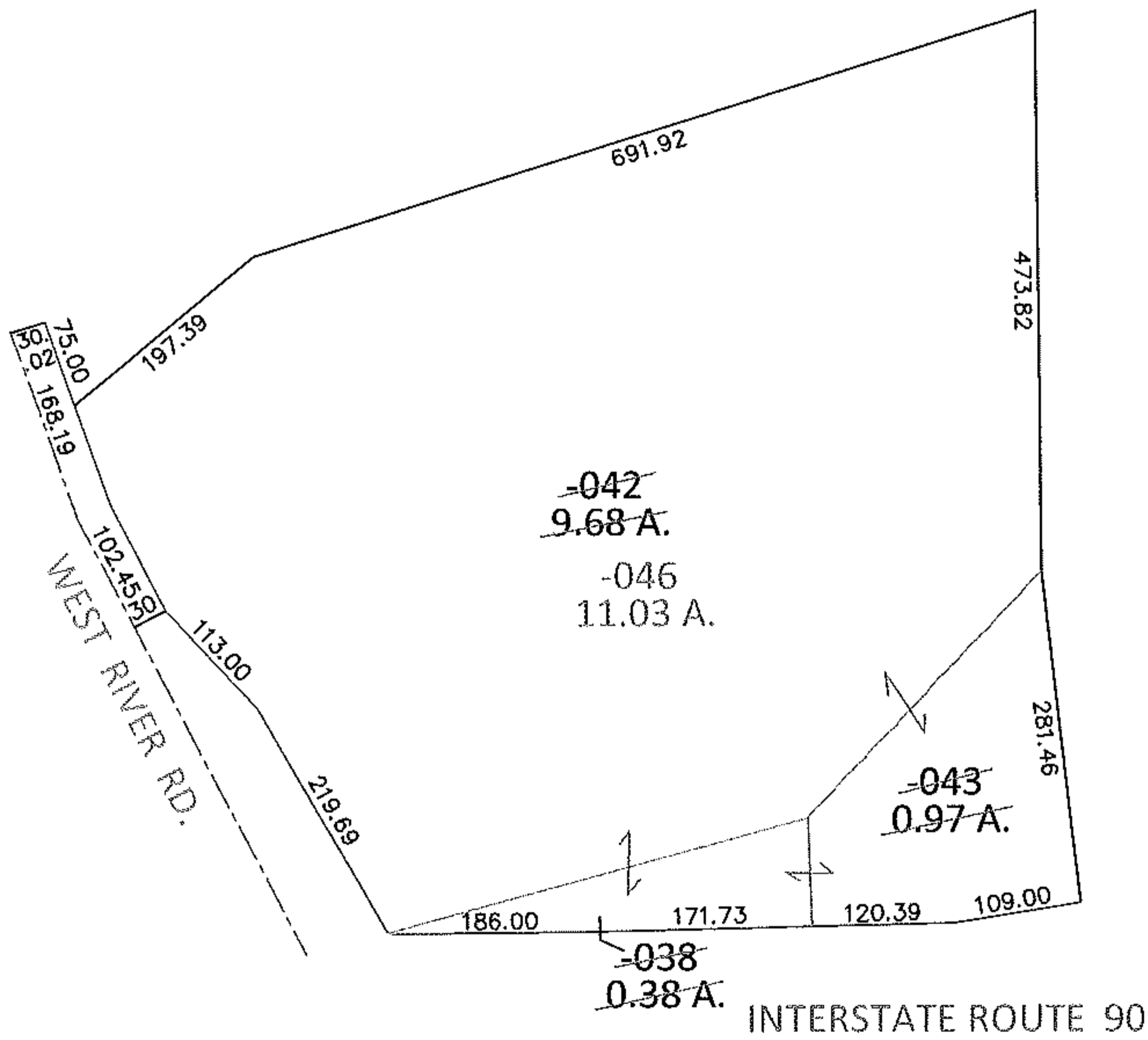
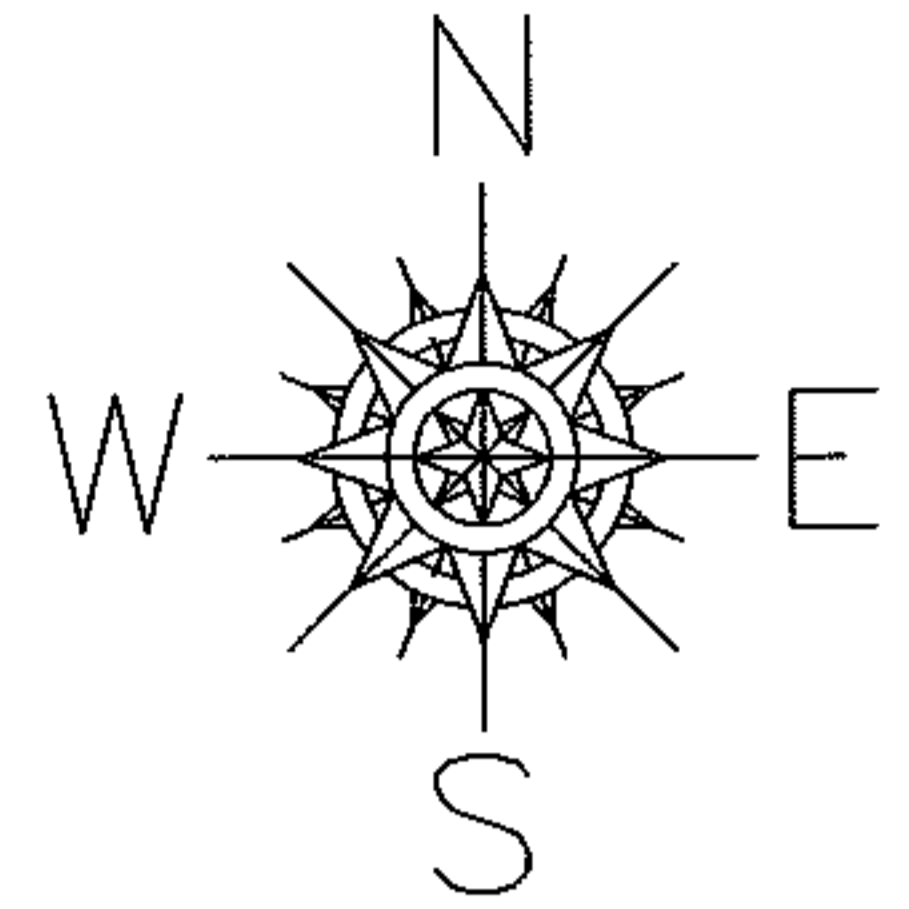


PARENT PARCEL: 06-23-017-102-038, -042, -043

CHILD PARCEL: 06-23-017-102-046

13-02837-C

STARTING POINT: INTERSECTION OF EAST LINE OF WEST RIVER RD. AND NORTH LINE OF I-90



**SPLITS/DEEDS PROCESSED**

LORAIN COUNTY TAX MAP DEPARTMENT  
226 MIDDLE AVE. ELYRIA, OHIO

SURVEYED BY: MICHAEL MACKAY

CLOSURE: .01:10,000

MAP PAGE(S): 6-29

APPROVED BY: RRM DATE: 10-31-13

SCALE: 1"=200 PRIOR INST.: 20130482874