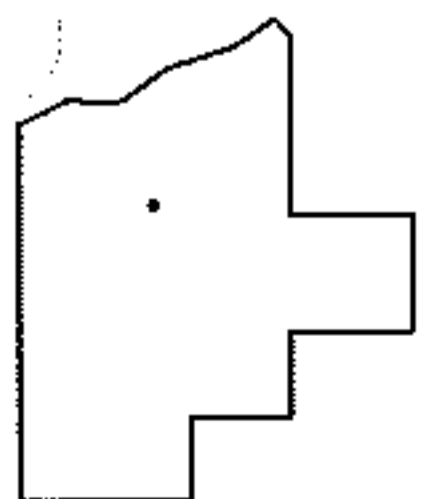
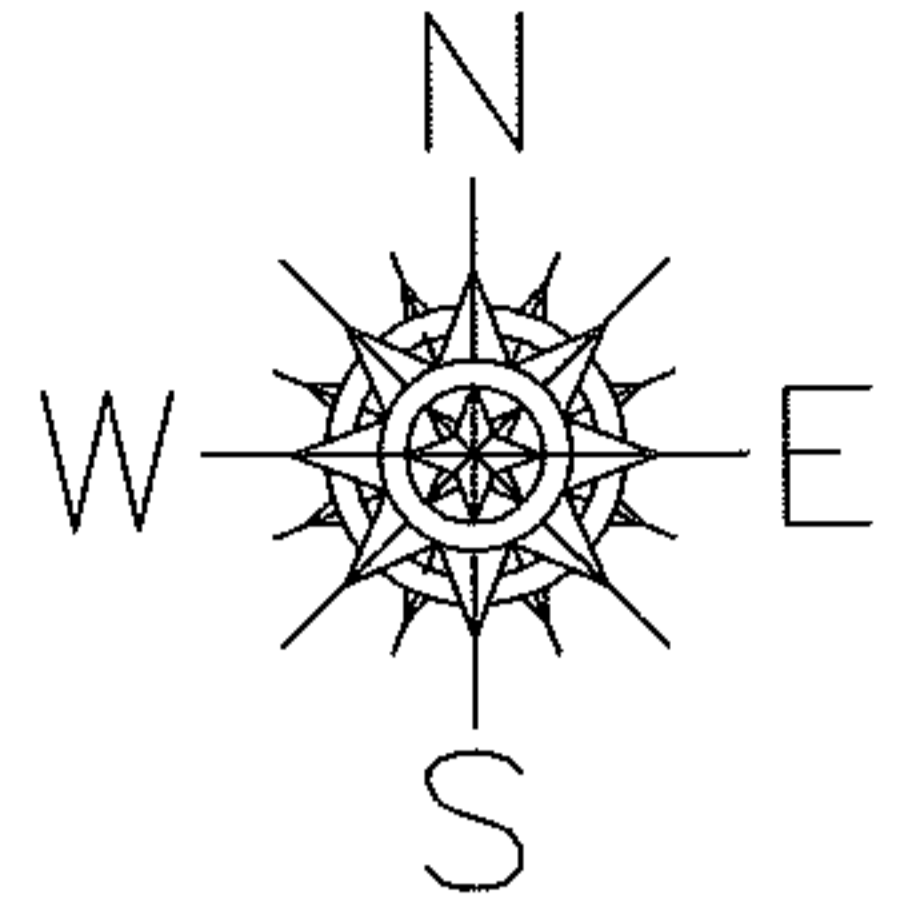
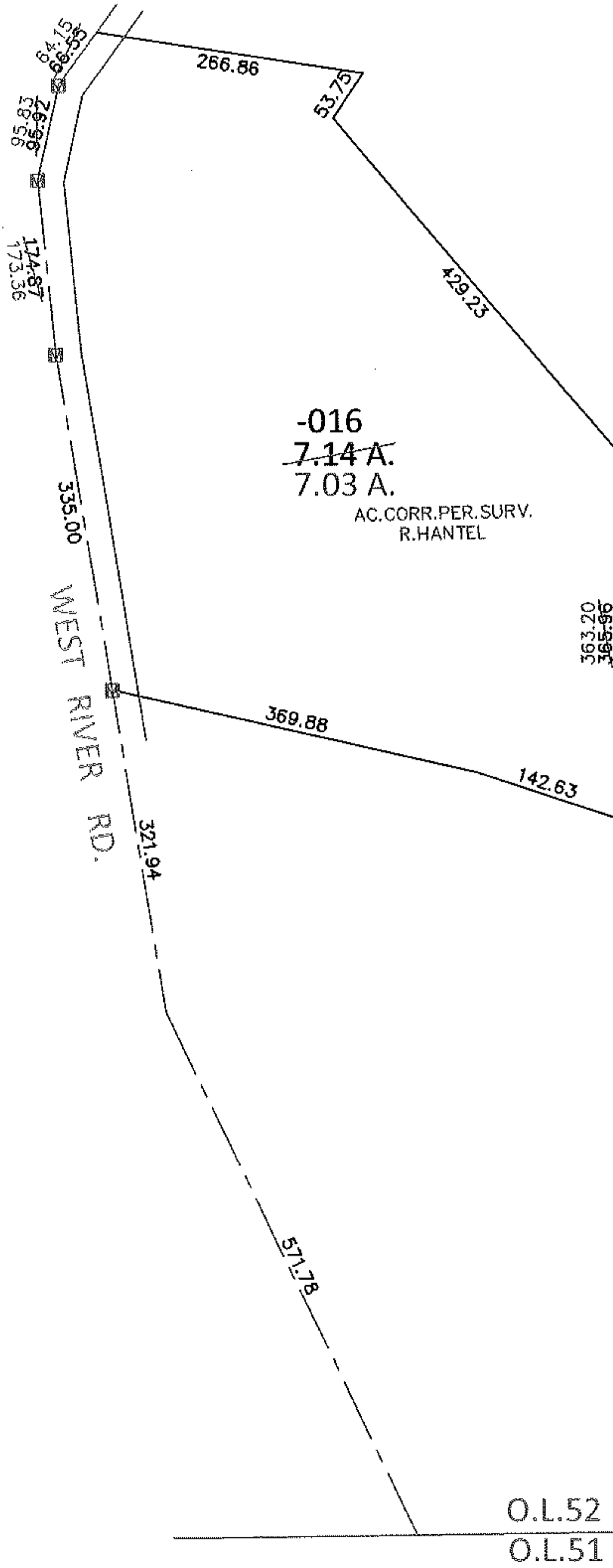


PARENT PARCEL: 12-00-052-000-016

CHILD PARCEL: \_\_\_\_\_

13-02836-A

STARTING POINT: INTERSECTION OF C/L OF WEST RIVER RD. AND SOUTH LINE OF O.L.52



**SPLITS/DEEDS PROCESSED**

LORAIN COUNTY TAX MAP DEPARTMENT  
226 MIDDLE AVE. ELYRIA, OHIO

SURVEYED BY: RICHARD F. HANTEL

CLOSURE: .01:10,000

MAP PAGE(S): 12-F

APPROVED BY: RRM DATE: 10-30-13

SCALE: 1"= 200 PRIOR INST.: 20120404438