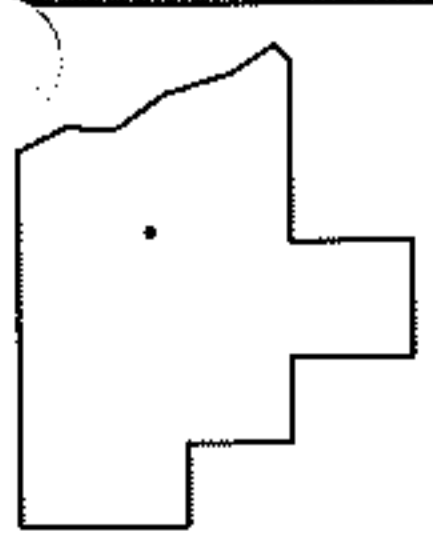
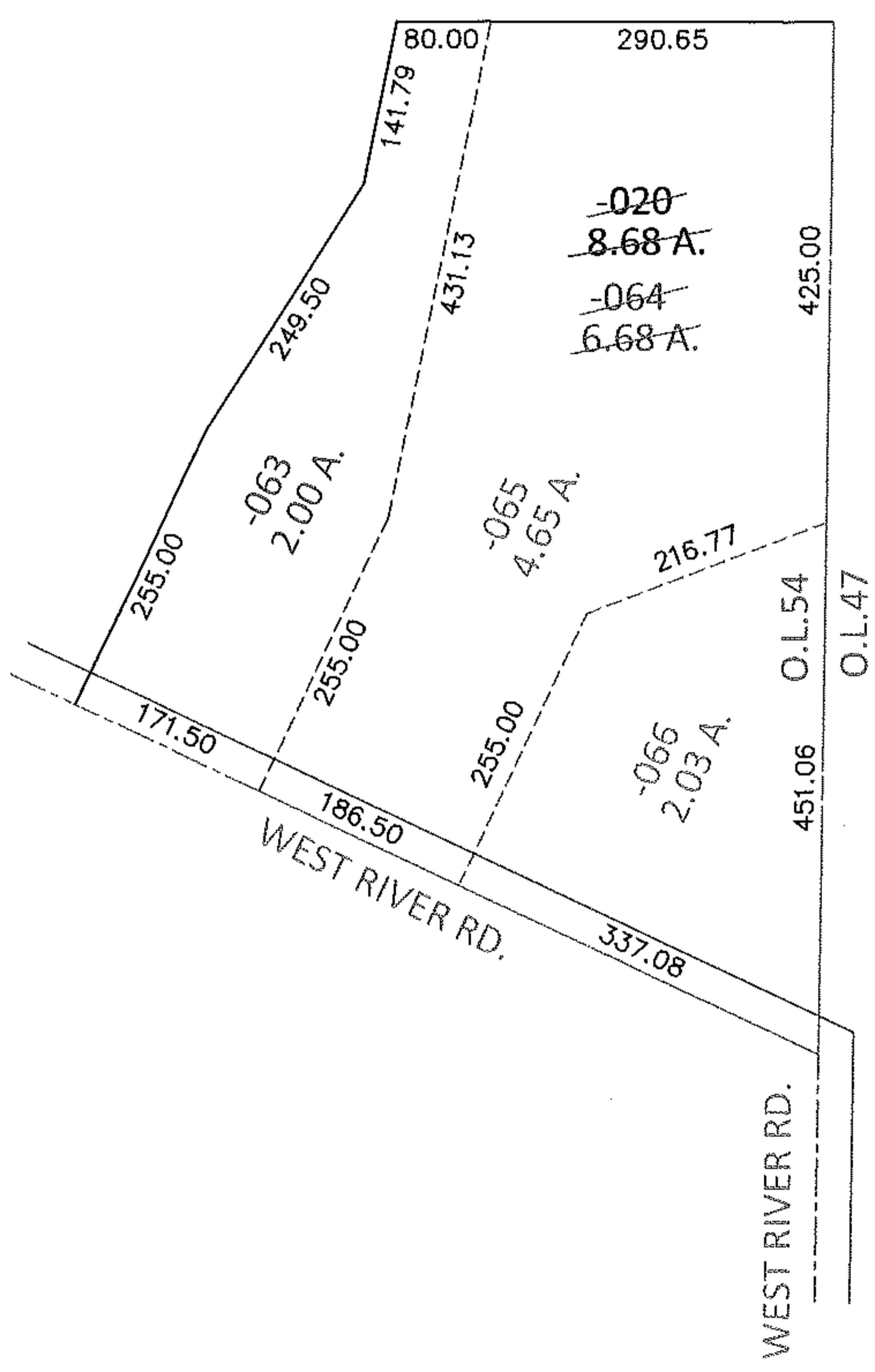
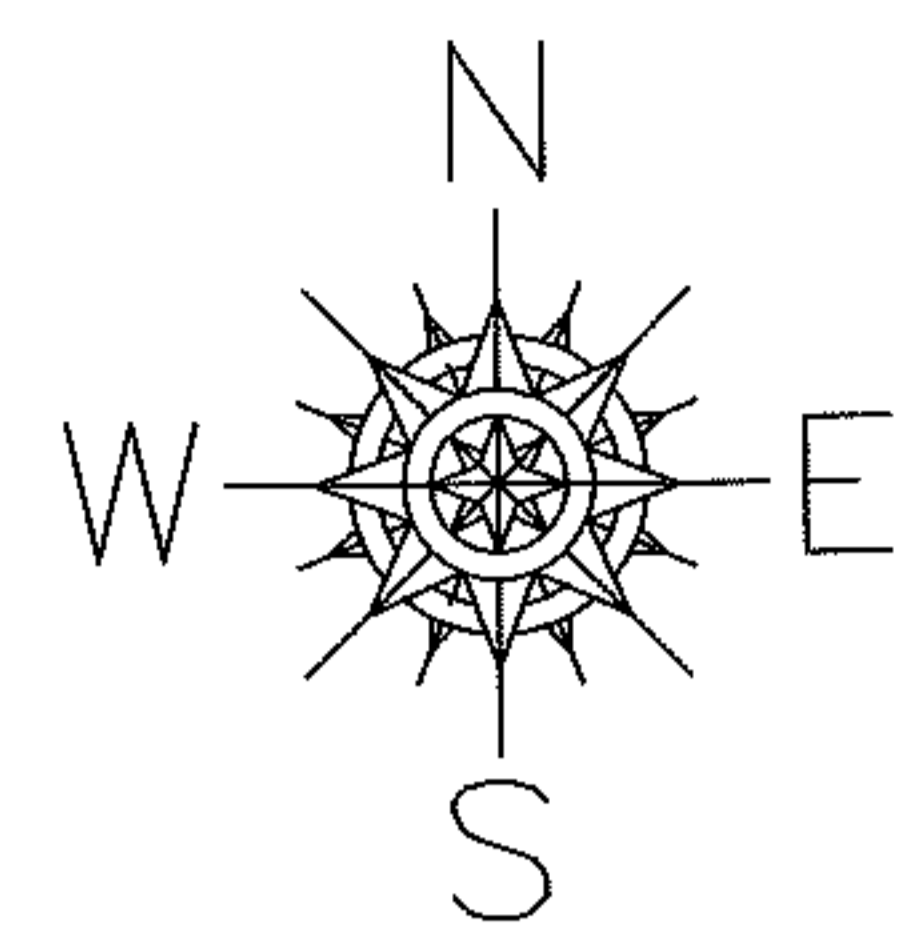


RASTER

PARENT PARCEL: 12-00-054-000-020
CHILD PARCEL: 12-00-054-000-063 THRU -066
STARTING POINT: INTERSECTION OF C/L OF WEST RIVER RD. AND EAST LINE OF O.L. 54

10-02833



SPLITS/DEEDS PROCESSED

LORAIN COUNTY TAX MAP DEPARTMENT
226 MIDDLE AVE. ELYRIA, OHIO

SURVEYED BY: JAMES B. ROOT
CLOSURE: .01:10,000
MAP PAGE(S): 12-00-054-B
APPROVED BY: RRM DATE: 5/27/10
SCALE: 1"= 200 PRIOR INST.: DV 755/446