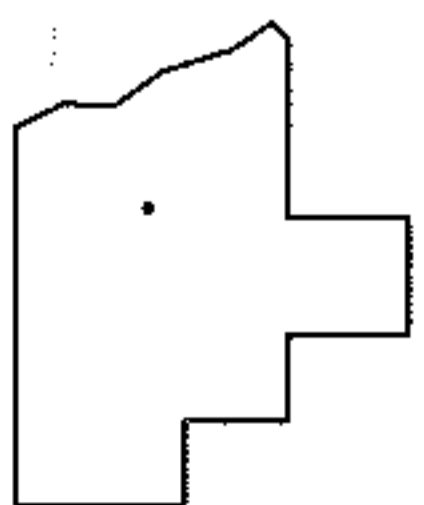
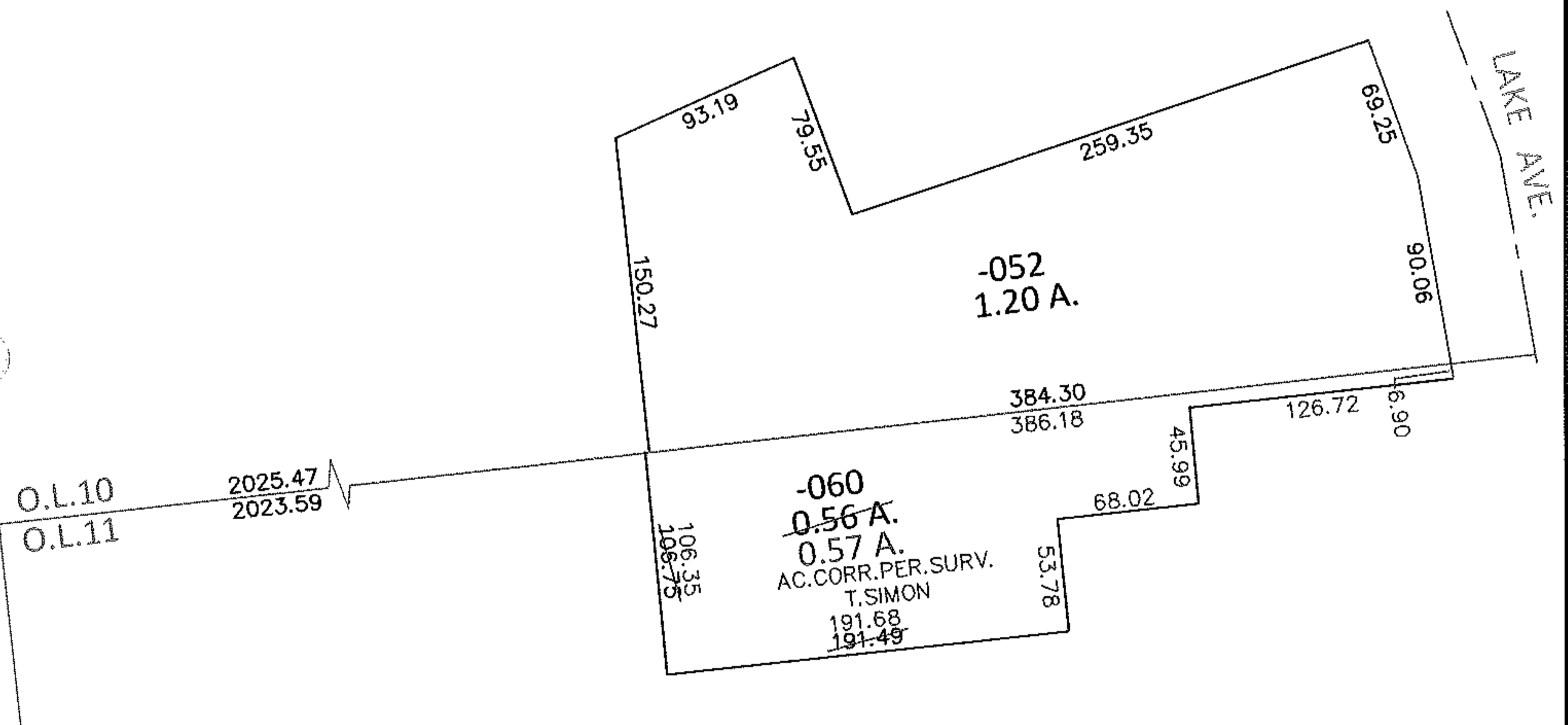
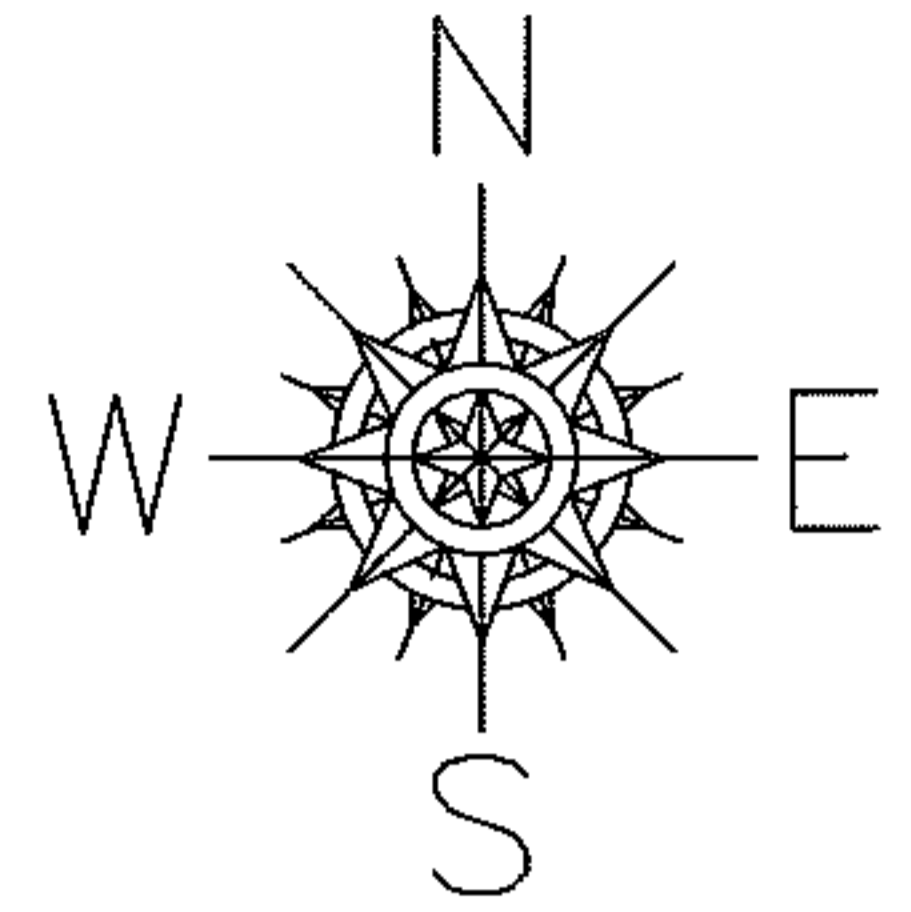


PARENT PARCEL: 06-23-011-101-060

CHILD PARCEL:

13-02833-A

STARTING POINT: SOUTHWEST CORNER OF O.L.10



SPLITS/DEEDS PROCESSED

LORAIN COUNTY TAX MAP DEPARTMENT
226 MIDDLE AVE. ELYRIA, OHIO

SURVEYED BY: THOMAS A. SIMON

CLOSURE: .01:10,000

MAP PAGE(S): 6-24, 6-25

APPROVED BY: RRM DATE: 11-6-13

SCALE: 1"= 100 PRIOR INST.: 20130480068