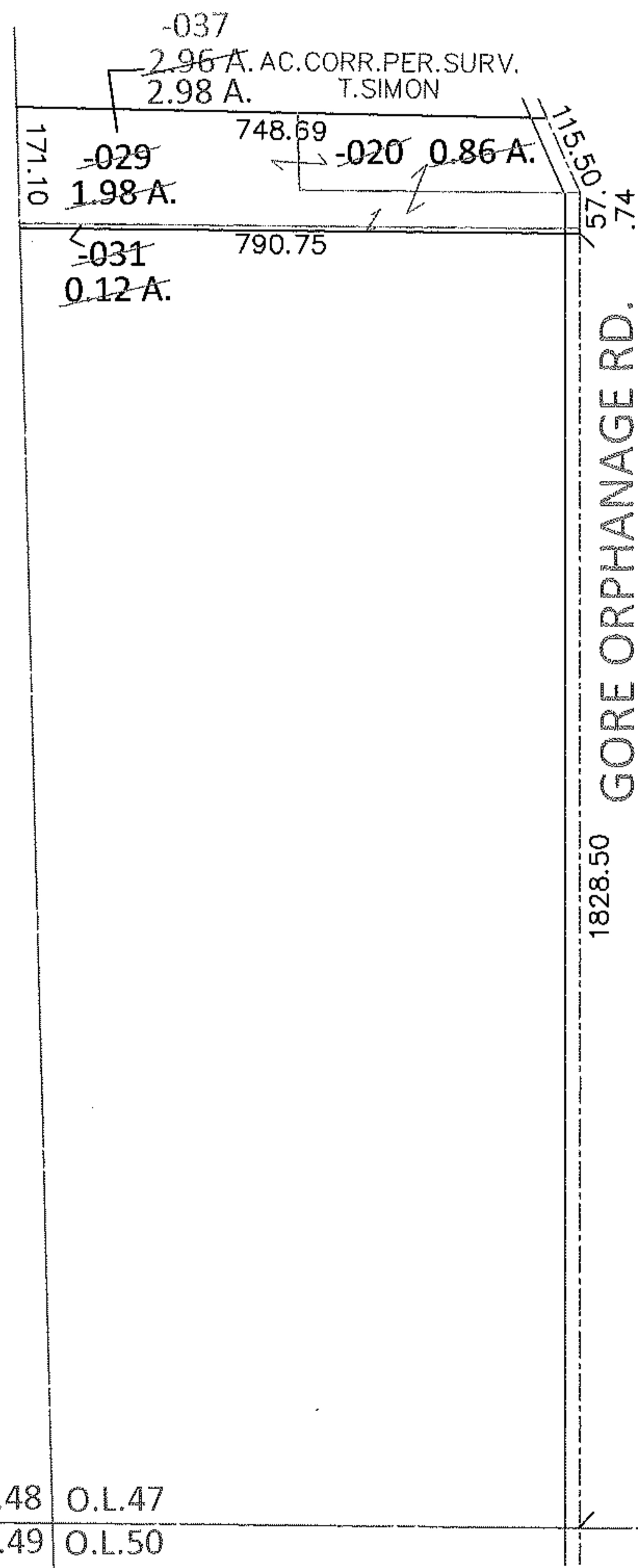
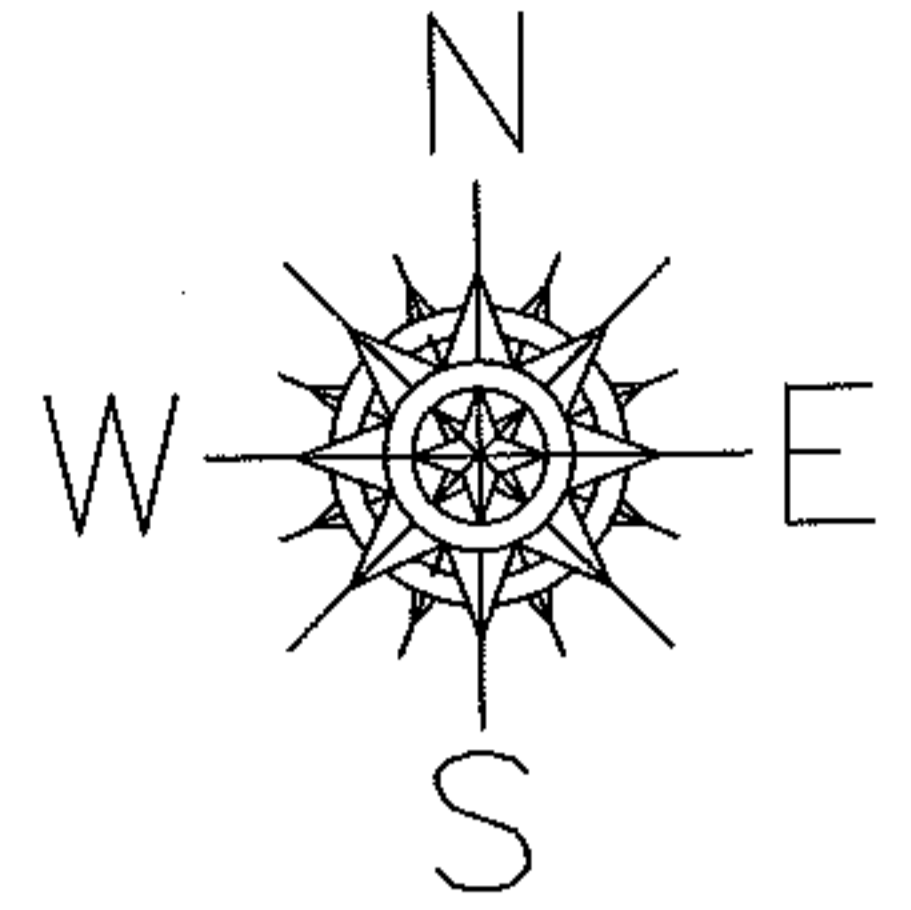


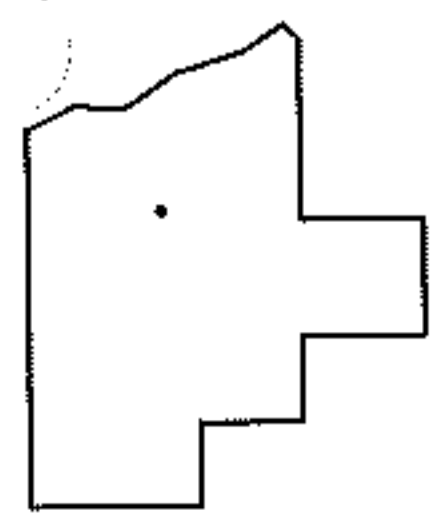
PARENT PARCEL: 01-00-047-000-020, -029, -031  
 CHILD PARCEL: 01-00-047-000-037  
 STARTING POINT: INTERSECTION OF SOUTH LINE OF O.L. 47 AND C/L OF GORE  
ORPHANAGE RD.

10-02832



O.L.48 O.L.47  
 O.L.49 O.L.50

\*DV 1245/403  
 \*DV 1218/604



**SPLITS/DEEDS PROCESSED**  
 LORAIN COUNTY TAX MAP DEPARTMENT  
 226 MIDDLE AVE. ELYRIA, OHIO

SURVEYED BY: THOMAS A. SIMON  
 CLOSURE: .01:10,000  
 MAP PAGE(S): 1-E  
 APPROVED BY: RRM DATE: 5/25/10  
 SCALE: 1"= 300 PRIOR INST.: \*SEE ABOVE\*