

RASTER

PARENT PARCEL: 12-00-064-101-004 & 12-00-064-102-017

CHILD PARCEL: 12-00-064-101-037

STARTING POINT: CL OF NICHOLS RD, AND CL OF STATION RD.

NO. 10-02831

COMBINATION

~~12-00-064-101-004~~

~~7.84 A.~~

~~12-00-064-102-017~~

~~2.50 A.~~

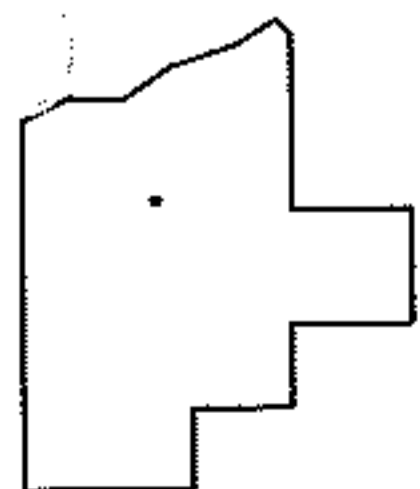
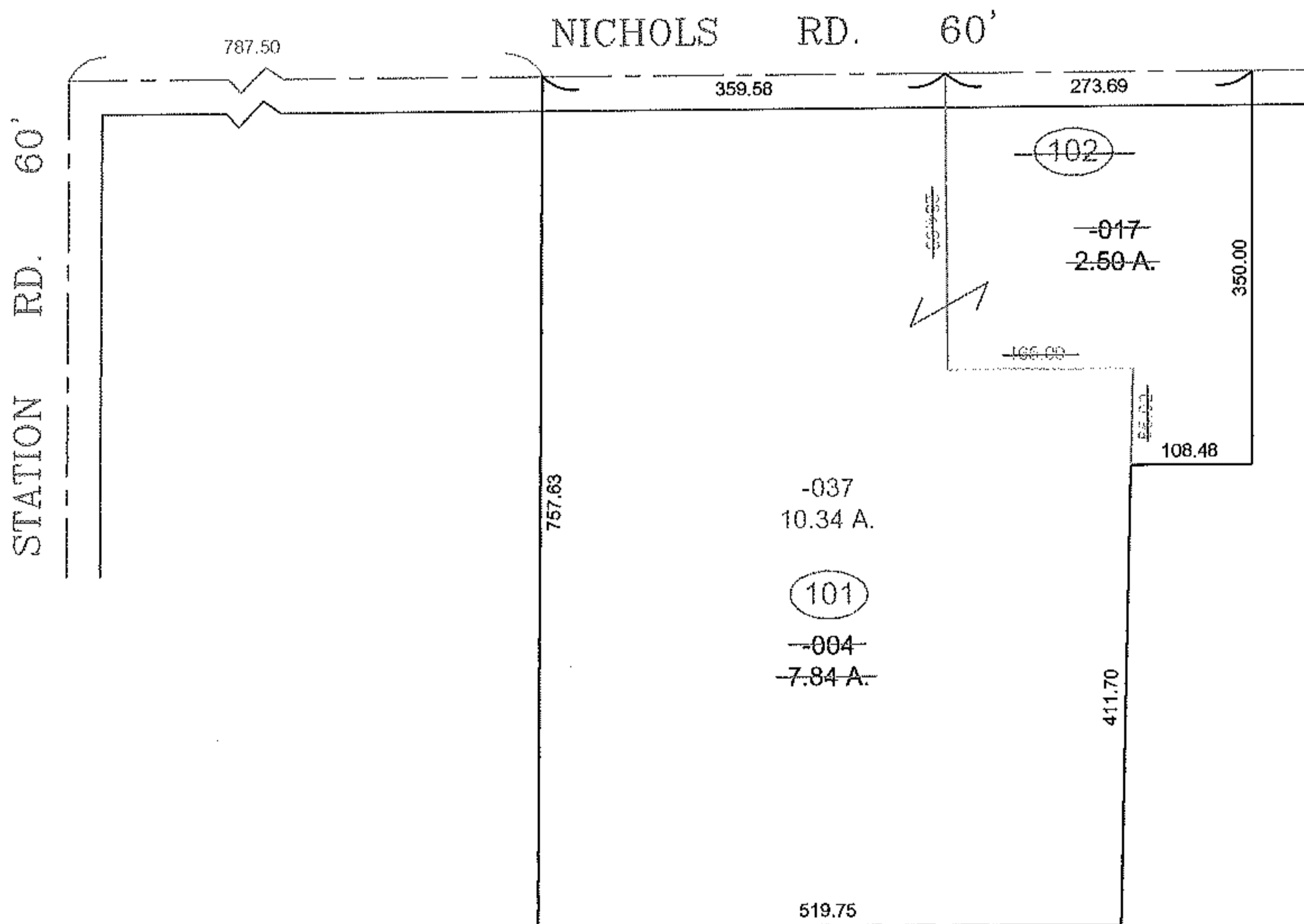
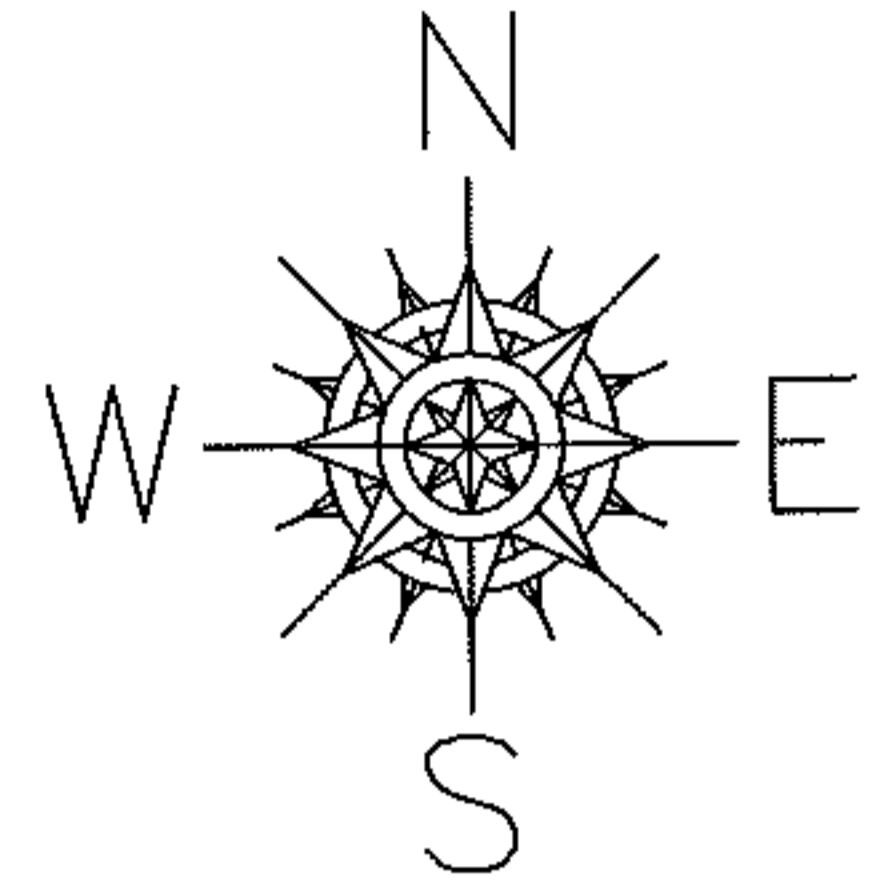
12-00-064-101-037

10.34 A.

PER DEED

OR 836 PG. 47

INST. 20010756117



SPLITS/DEEDS PROCESSED
LORAIN COUNTY TAX MAP DEPARTMENT
226 MIDDLE AVE. ELYRIA, OHIO

SURVEYED BY: NONE
CLOSURE: NONE
MAP PAGE(S): 12-00-064-A
APPROVED BY: IJS DATE: 5/19/10
SCALE: 1" = 200 PRIOR INSTRUMENT: 20010756117