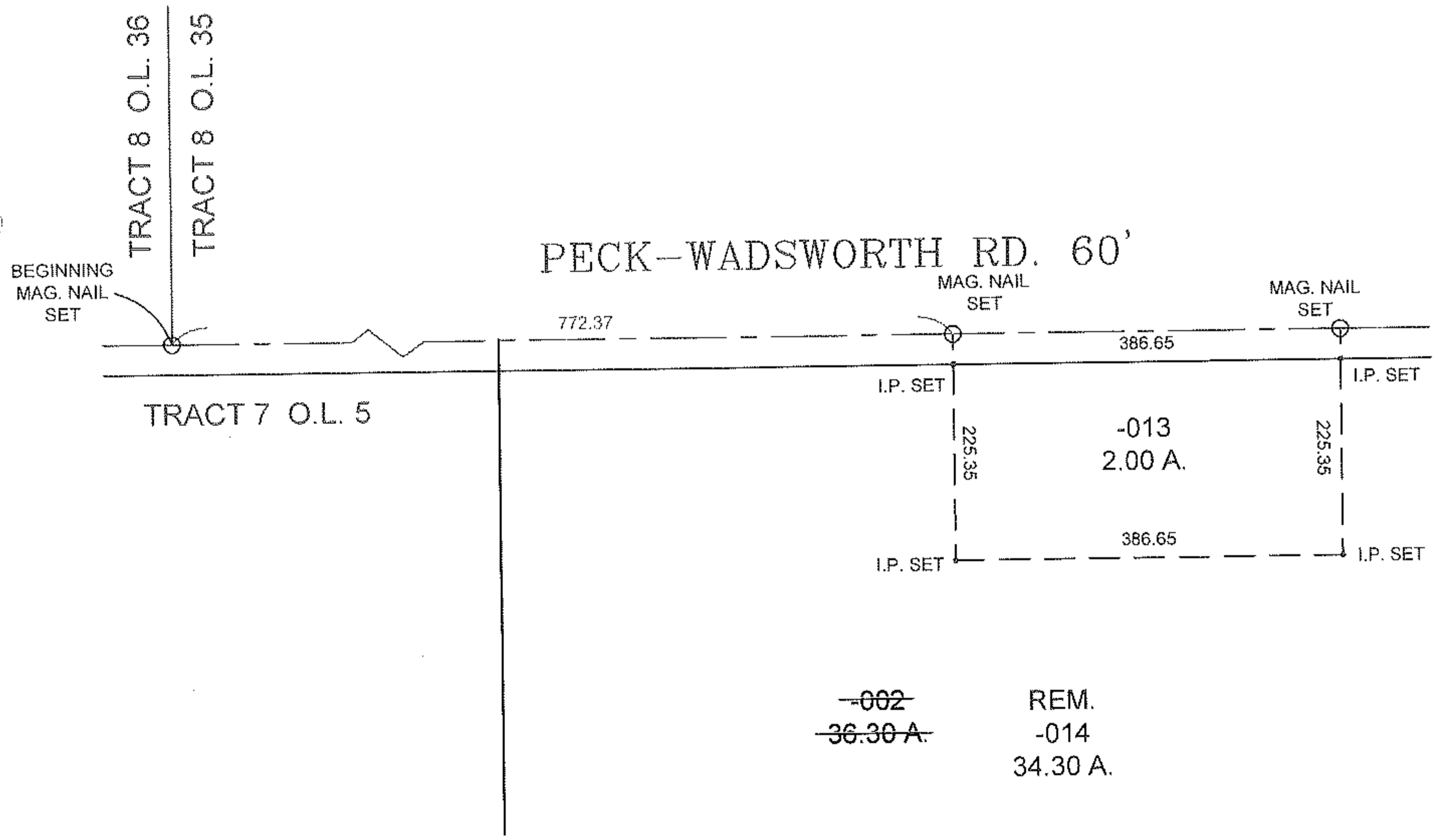
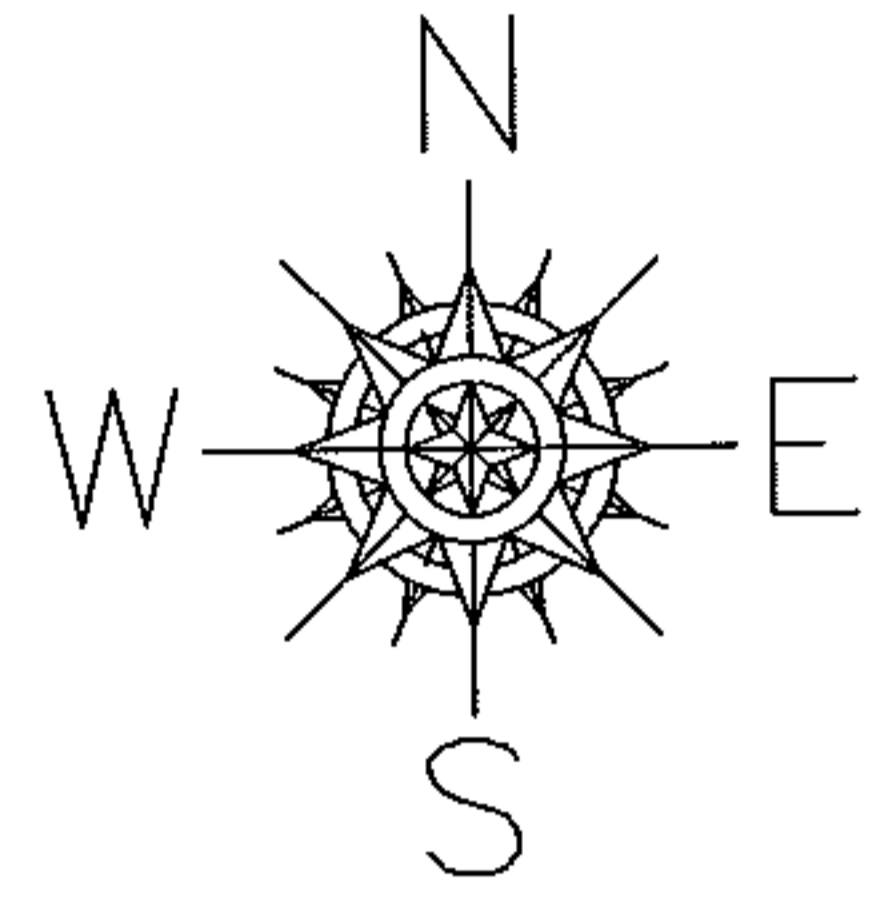


RASTER

PARENT PARCEL: 17-07-005-000-002
CHILD PARCEL: 17-07-005-000-013 & -014
STARTING POINT: MAG. NAIL SET, SOUTHWEST CORNER OF TRACT 8 O.L. 35

10-02829



SPLITS/DEEDS PROCESSED
 LORAIN COUNTY TAX MAP DEPARTMENT
 226 MIDDLE AVE. ELYRIA, OHIO

SURVEYED BY: THOMAS M. SNEZEK
 CLOSURE: 0.00 : 10,000
 MAP PAGE(S): 17-A
 APPROVED BY: TJS DATE: 5/12/10
 SCALE: 1" = 200' PRIOR INSTRUMENT: 19970494513