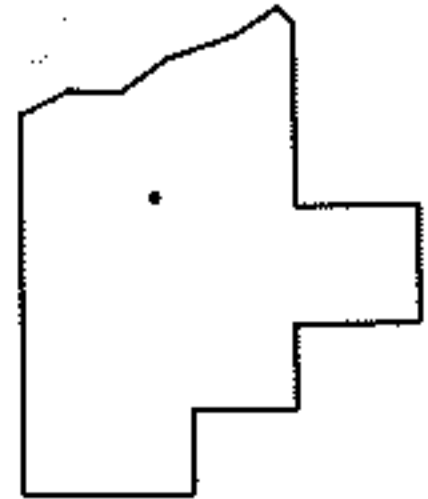
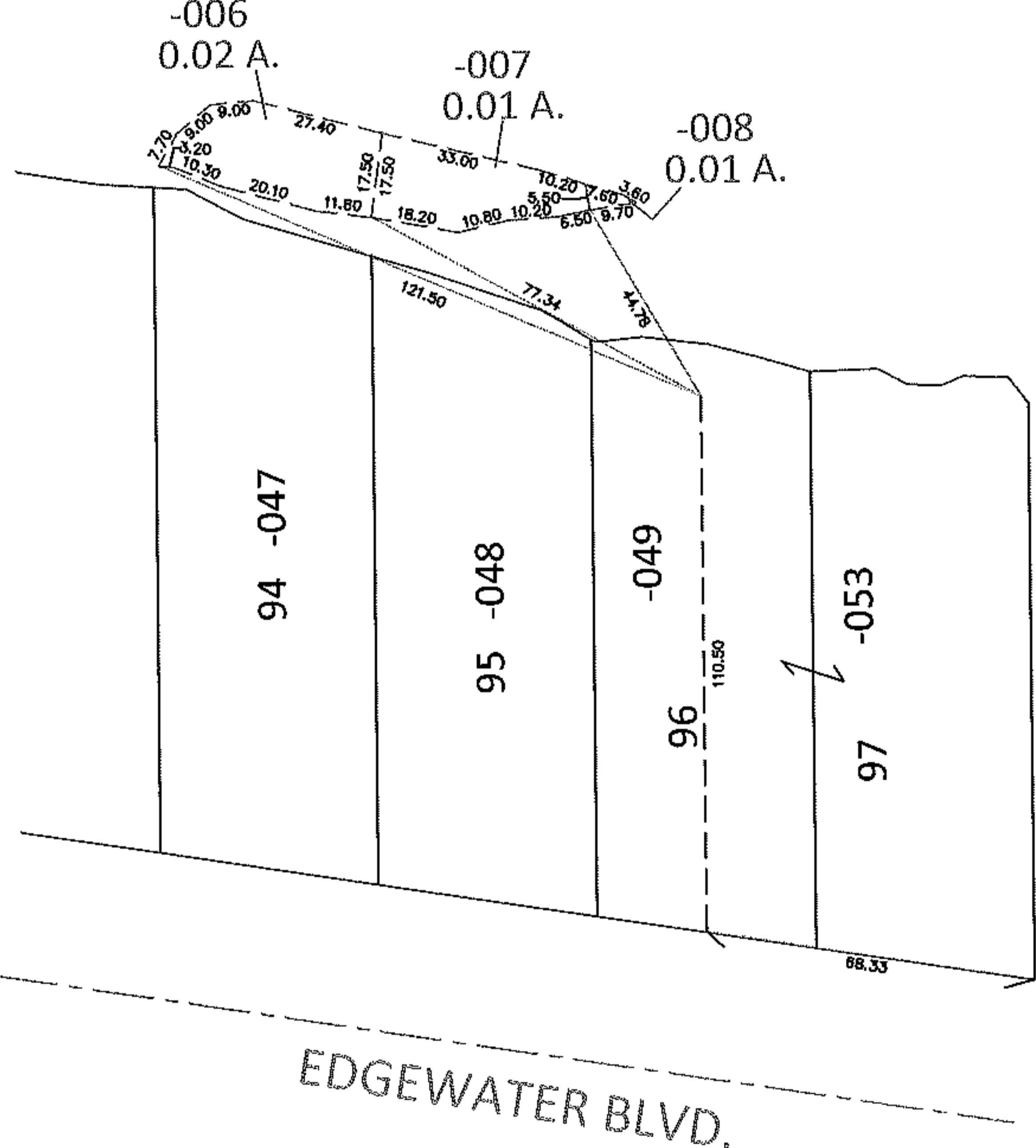
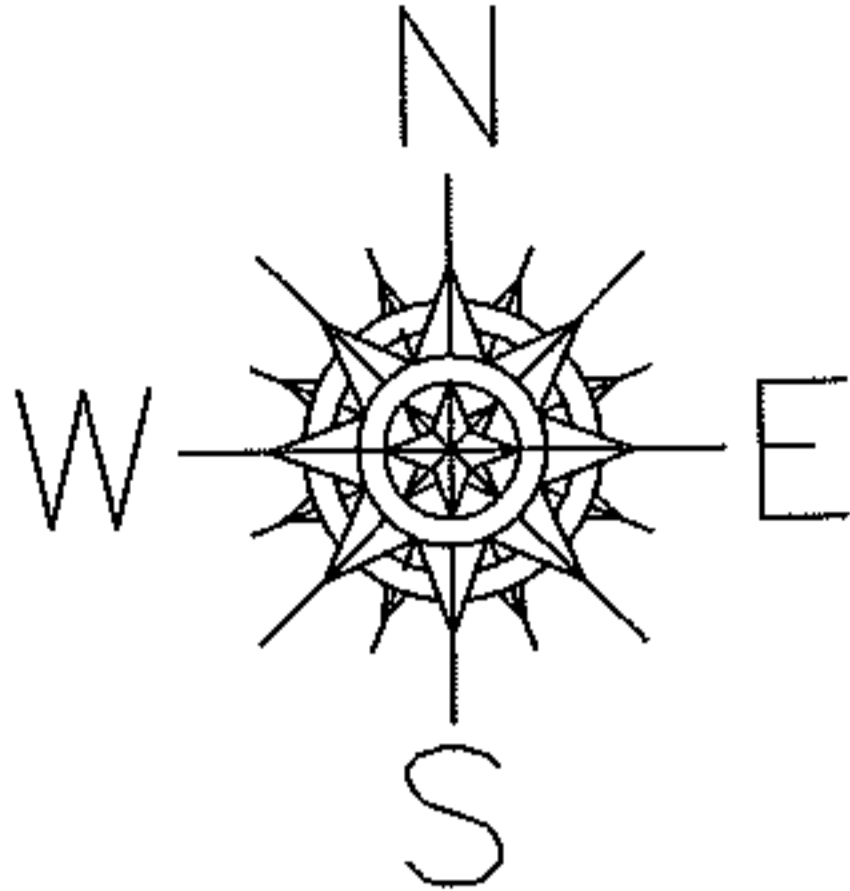


PARENT PARCEL: \_\_\_\_\_  
CHILD PARCEL: 01-00-003-640-006 THRU -008  
STARTING POINT: SOUTHEAST CORNER OF S/L 97

10-02822

SUBMERGED LAND LEASE  
SUB-2331-LO



SPLITS/DEEDS PROCESSED  
LORAIN COUNTY TAX MAP DEPARTMENT  
226 MIDDLE AVE. ELYRIA, OHIO

SURVEYED BY: DALE R. HAYWOOD  
CLOSURE: .01:10,000  
MAP PAGE(S): 1-00-003-B  
APPROVED BY: RRM DATE: 4-16-10  
SCALE: 1"= 50 PRIOR INST.: 20080246373